



McElroy Manufacturing, Inc.

The leader by design.

Tulsa, Oklahoma U.S.A.

DRAWN: SS

CHECK: BWP

APPRVD: B

DATE: 10/07/96

SHT No: 4

REV No: F

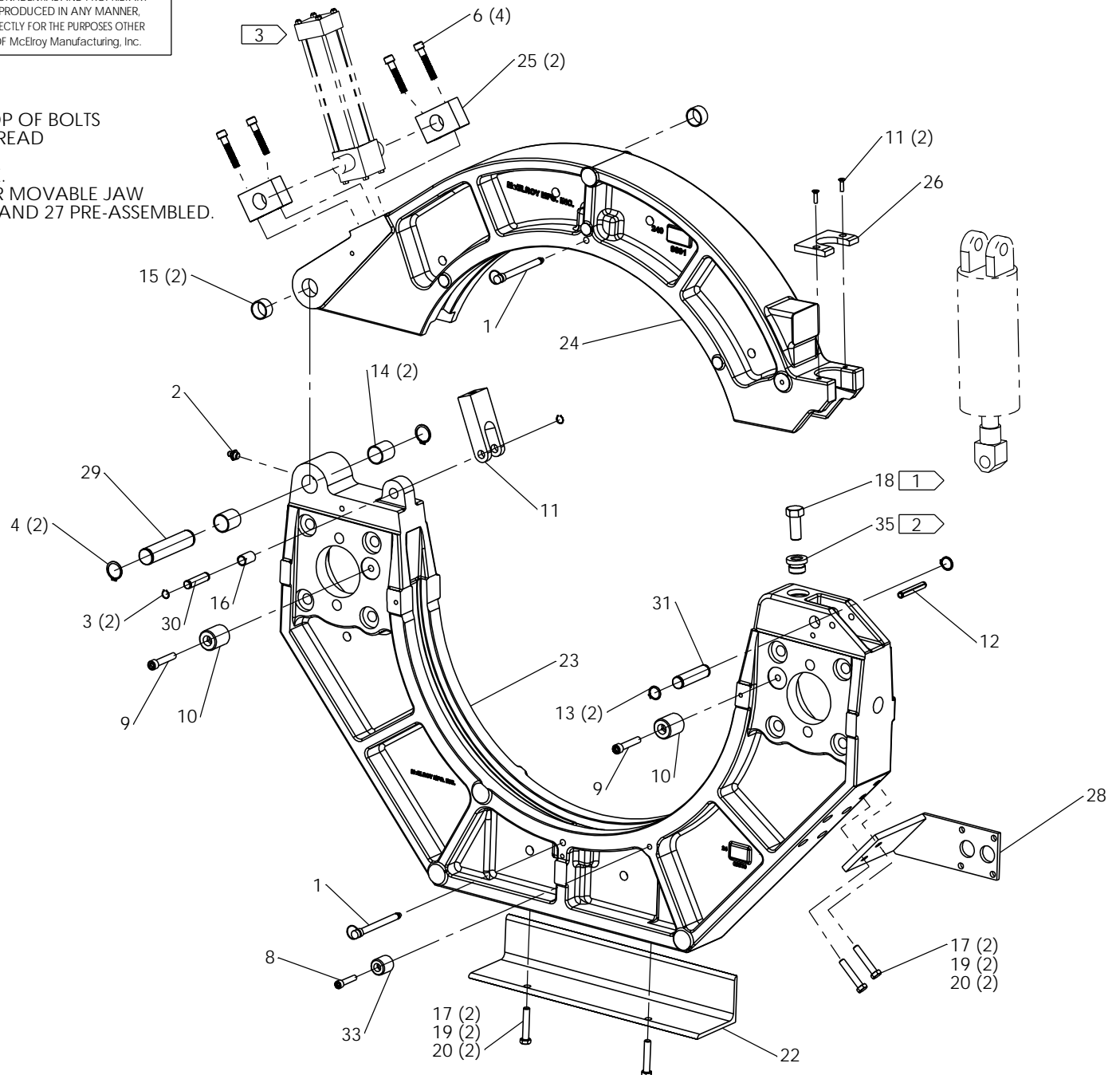
PART No: 2421302

### # 824A INNER MOVABLE JAW ASSEMBLY

NOTE: THIS DRAWING AND THE INFORMATION CONTAINED THEREIN IS THE CONFIDENTIAL AND PROPRIETARY PROPERTY OF McElroy Manufacturing, Inc. THE DRAWING IS NOT TO BE REPRODUCED IN ANY MANNER, SUBMITTED TO OUTSIDE PARTIES FOR EXAMINATION, OR USED DIRECTLY OR INDIRECTLY FOR THE PURPOSES OTHER THAN THOSE FOR WHICH IT WAS FURNISHED WITHOUT WRITTEN PERMISSION OF McElroy Manufacturing, Inc.

#### NOTES:

1. HAND GRIND OFF RIDGES ON TOP OF BOLTS
2. INSTALL WITH HIGH STRENGTH THREAD LOCKING COMPOUND
3. LOCATE PORT ON OPPOSITE SIDE.
4. ORDER # A2409801 LOWER INNER MOVABLE JAW KIT. INCLUDES ITEMS 2, 12, 14-18 AND 27 PRE-ASSEMBLED.



**#824A INNER MOVABLE JAW ASSEMBLY**PARTS LIST

ITEM	PART NO.	QTY	DESCRIPTION
	<b>2421302</b>		<b>ASSEMBLY</b>
1	MCE00004	2	3/8" DIA. x 3.75" GRIP DETENT PIN
2	MFJ00002	1	1/8 NPT GREASE ZERK
3	MCB00001	2	EXTERNAL SNAP RING
4	MCB00006	2	EXTERNAL SNAP RING
5			
6	MAC00338	4	3/8-24NF x 2" LG. SHCS
7	MAD00032	2	#10-24NC x 5/8" LG. FHSCS
8	MAC00077	1	5/16-18NC x 1-1/2" LG. SHCS
9	MAC00098	2	3/8-16NC x 2" LG. SHCS
10	MJC00001	2	REST BUTTON
11	MAD00033	2	#10-24NC x 3/4" LG. FHSCS
12	MCG00023	1	3/8" DIA. x 2-1/2" LG. ROLL PIN
13	MCB00003	2	EXTERNAL SNAP RING
14	MDM00004	2	BUSHING
15	MDM00003	2	BUSHING
16	MDM00001	1	BUSHING
17	MAB00068	4	3/8-16NC x 2" LG. HHCS
18	MAH00038	1	5/8-18NF x 1-1/2" LG. HHCS W/NYLON LOCK
19	MBA00007	4	3/8-16NC FINISHED HEX NUT
20	MBE00007	4	3/8" REGULAR SPLIT LOCK WASHER
21	2402202	1	UPPER JAW PIVOT CYLINDER CLEVIS
22	3601502	1	CARRIAGE HOSE TROUGH
23	2409801	1	LOWER INNER MOVABLE JAW
24	2409901	1	UPPER JAW
25	3607101	2	TRUNNION BLOCK ASSEMBLY
26	2416701	1	UPPER JAW CLAMP PAD
27	3601601	1	HOSE RETAINER BRACKET
28	2424005	1	MOVABLE JAW VALVE STACK MOUNTING BRACKET
29	2414001	1	1" DIA. JAW PIN
30	2414002	1	1/2" DIA. JAW PIN
31	2414003	1	3/4" DIA. JAW PIN
32			
33	3603618	1	REST BUTTON
34			
35	3619101	1	THREADED INSERT

## DRAWING REVISION HISTORY LISTING

**PART NO:** 2421302

**DESCRIPTION:** #824A INNER MOVABLE JAW ASSEMBLY

<u>APPR.</u>	<u>REV</u>	<u>DATE</u>	<u>BY</u>	<u>DESCRIPTION OF REVISION</u>
SWB	B	10/26/98	TGW	ADDED ITEMS 17, 19, 20, 22, 27 & 28 & ADDED (2) TO QTY OF ITEM 7.
TLW	-	5/20/99	DJL	ADDED NOTE 4 FOR PRE-ASSEMBLED JAW KIT.
SWB	C	07/06/01	BWW	REVISED TO REMOVE ITEMS 11 MAA00126 AND 34 2426401. UPPER FACER STOP FOUND TO BE UNNECESSARY.
MLM	D	5/13/03	RLE	REVISED ITEM #7, MAD00032 #10-24NC x 5/8 LG. FHSCS, FROM QTY. (4) TO QTY.(2) & ADDED ITEM #11, MAD00033 #10-24NC x 3/4 LG. FHSCS, QTY. (2) . NEEDED LONGER SCREW DUE TO INCREASE IN UPPER JAW CLAMP PAD THICKNESS.
SWB	E	01/04/05	BWW	REMOVED ITEM 32 2415901 TO MATCH AS BUILT CONDITION. THIS REVISION TOOK EFFECT WITH THE REVISION OF 2400801 HYDRAULIC SCHEMATIC ON 4/15/03.
SWB	F	1/04/07	PJD	REVISED AND REDRAWN TO SHOW EXPLODED VIEW TO IMPROVE CLARITY FOR ASSEMBLY.