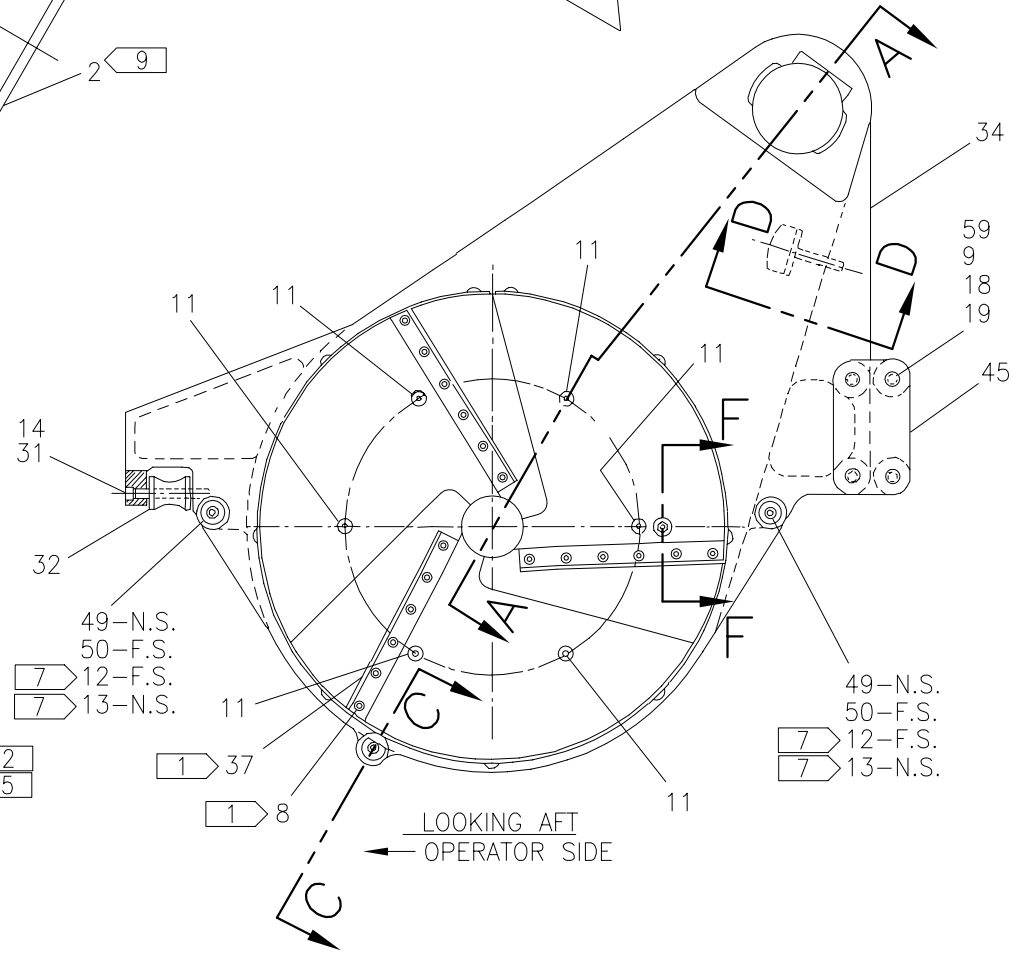
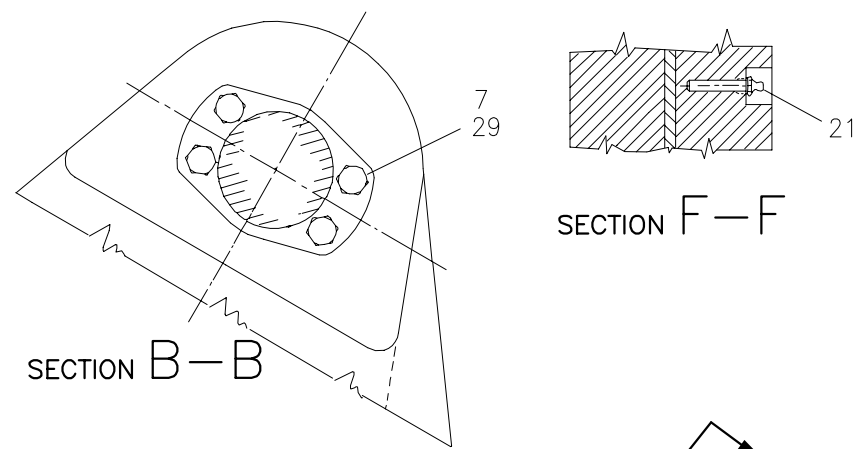
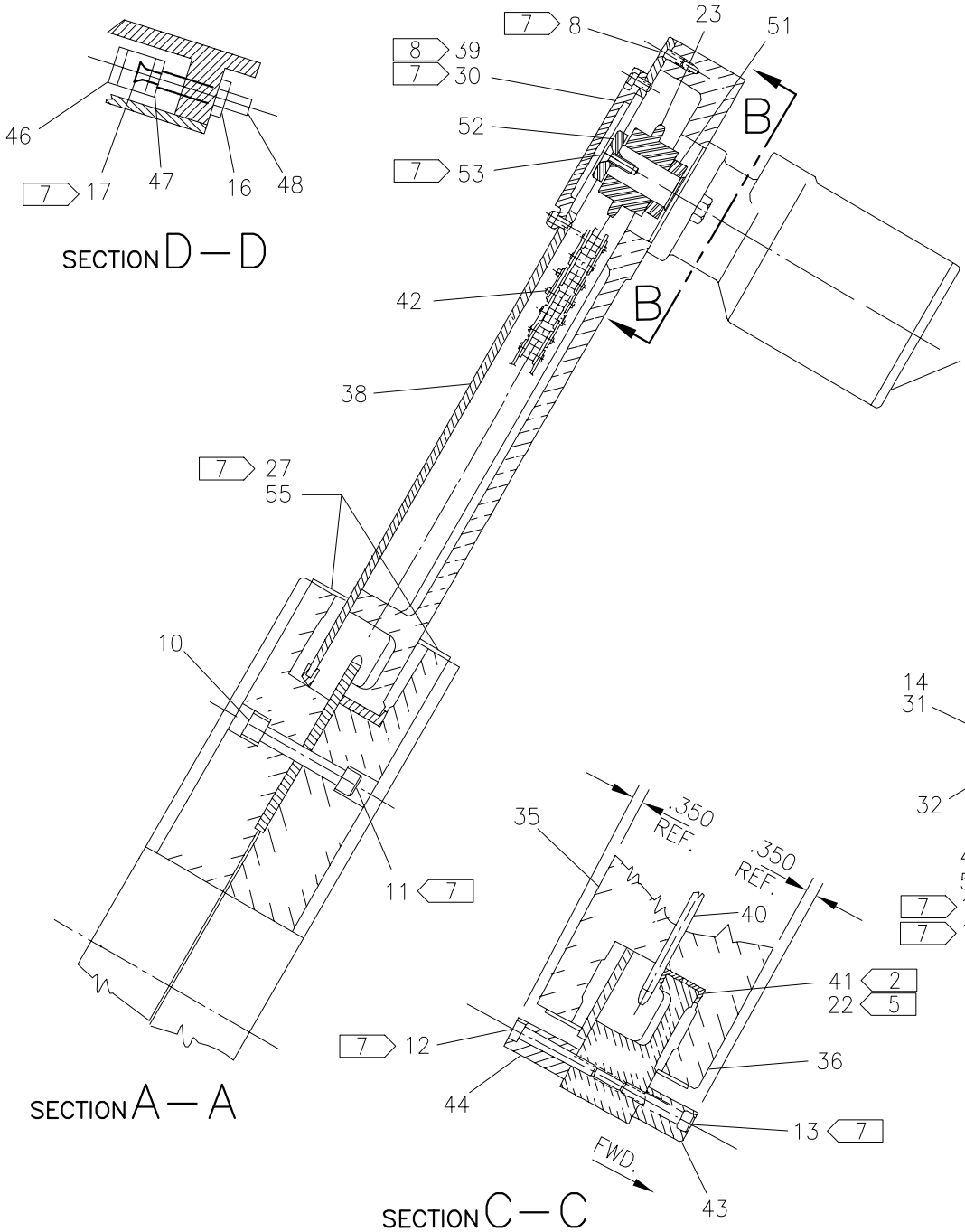




McElroy Manufacturing, Inc.
 The leader by design.
 Tulsa, Oklahoma U.S.A.

DRAWN: TLW	CHECK: BWP	APPRV'D: B	DATE: 1/31/96	DWG No: 2419800	SHT No: 2	REV No: V	PART No: 2419802
#824A FACER ASSEMBLY							CAD No: 2419802

NOTE: THIS DRAWING AND THE INFORMATION CONTAINED THEREIN IS THE CONFIDENTIAL AND PROPRIETARY PROPERTY OF McElroy Manufacturing, Inc. THE DRAWING IS NOT TO BE REPRODUCED IN ANY MANNER, SUBMITTED OUTSIDE PARTIES FOR EXAMINATION, OR USED DIRECTLY OR INDIRECTLY FOR THE PURPOSES OTHER THAN THOSE FOR WHICH IT WAS FURNISHED WITHOUT WRITTEN PERMISSION OF McElroy Manufacturing, Inc.



#824A FACER ASSEMBLYPARTS LIST

ITEM	PART NO.	QTY	DESCRIPTION
	2419802		Assembly
1			
2	MEC00006	1	HYDRAULIC MOTOR
3			
4			
5			
6			
7	MAB00069	4	1/2-13NC x 1-1/2" LG. HHCS
8	MAH00077	61	1/4-20NC x 3/4" LG. FHSCS SS
9	MAF00051	4	1/2 DIA x 2-3/4" LG. SHOULDER SCREW
10	MBC00017	6	1/2-13NC ALLEN LOCK NUT
11	MAC00150	6	1/2-13NC x 4" LG. SHCS
12	MAC00100	3	3/8-16NC x 2-1/2" LG. SHCS
13	MAC00098	3	3/8-16NC x 2" LG. SHCS
14	MFA00014	1	6MPT PLUG
15			
16	MBB00029	1	1/2-20NF FINISHED JAM NUT
17	MAD00033	2	10-24NC x 3/4" LG. FHSCS
18	MBA00007	4	3/8-16NC FINISHED HEX NUT
19	MBE00007	4	3/8" REGULAR SPLIT LOCK WASHER
20			
21	MFJ00002	1	GREASE ZERK
22	MAD00002	16	4-40NC x 3/8" LG. FHSCS
23	MDF00073	1	CHAIN SPROCKET
24			
25			
26			
27	MAE00022	18	10-24NC x 3/8" LG. BHSCS
28			
29	MBE00009	4	1/2" REGULAR SPLIT LOCK WASHER
30	MAC00051	4	1/4-20NC x 1/2" LG. SHCS
31	3613201	1	ROLLER PIN
32	2413401	1	SUPPORT ROLLER
33			
34	3602103	1	#824 FACER BODY

#824 FACER ASSEMBLYPARTS LIST (Continued)

ITEM	PART NO.	QTY	DESCRIPTION
35	3602507	1	TAPPED BLADE HOLDER
36	3602508	1	C'BORED BLADE HOLDER
37	3615711	6	#824A FACER BLADE
38	3603604	1	FACER BODY COVER ASSEMBLY
39	1231102	1	#412 COVER PLATE
40	3603607	1	DRIVEN SPROCKET
41	3603608	2	FACER BEARING
42	A2423201	1	FACER CHAIN ASSEMBLY
43	3603622	1	REST BUTTON
44	3603624	1	REST BUTTON
45	3603615	2	SPLICE PLATE
46	3603701	1	CHAIN TENSIONER SHOE
47	3603801	1	CHAIN TENSIONER MOUNTING PLATE
48	3603901	1	CHAIN TENSIONER ADJUSTABLE SCREW
49	3603621	2	REST BUTTON
50	3603623	2	REST BUTTON
51	3629103	1	FACER SPROCKET SPACER
52	3629201	1	FACER SPROCKET RETAINER
53	MAD00073	1	3/8-16NC x 1" LG. FHSCS
54			
55	2422701	1	FACER CHIP GUARD ASSEMBLY
56			
57			
58			
59	MBG00002	4	1/2" TYPE 'AN' FLAT WASHER

NOTES:

1. INSTALL IN #3602507 AND #3602508.
2. PACK BEARINGS WITH EP GREASE.
- 3.
4. N.S. = NEAR SIDE, F.S. = FAR SIDE
5. INSTALL WITH HI-TEMPERATURE ANTI-SIEZE COMPOUND.
6. FILL FACER CAVITY 2/3 FULL WITH EP GREASE.
7. INSTALL WITH MEDIUM STRENGTH THREAD LOCKING COMPOUND.
8. INSTALL GASKET SEALER.
9. HYDRAULIC MOTOR FURNISHED WITH 5/16" SQUARE KEY x 1-1/4" LG.
FOR REPLACEMENT KEY, ORDER MCK00052.

DRAWING REVISION HISTORY LISTING

PART NO: 2419802
DESCRIPTION: #824A FACER ASSEMBLY

<u>APPR.</u>	<u>REV</u>	<u>DATE</u>	<u>BY</u>	<u>DESCRIPTION OF REVISION</u>
B	H	4/25/95	SWB	Scanned & reduced to 'A' size format. Created typed parts list. Removed pivot arm.
--	J	--	--	NOT DOCUMENTED
SWB	K	7/19/97	BB	CHANGED ITEM #38 FACER BODY COVER 3603605 TO FACER BODY COVER ASSEMBLY 3603604. REMOVED ITEM #28 SEAL BECAUSE IT IS PART OF 3603604.
SWB	M	10/22/97	BB	CHANGED ITEM # 23 MDF00019 TO MDF00009. CHANGED ITEM #51 3614701 DRIVE SPROCKET HUB MOD. TO 3629101 FACER SPROCKET SPACER. ADDED ITEM #52, #53 & #54 3629201, MAD00073, & MJQ00332. REVISED SPROCKET DESIGN TO ASSIST WITH ASSEMBLY & ELIMINATE SPROCKET FRACTURE.
TLW	--	03/30/98	RLE	ITEM 23 WAS MDF00009, CHAIN SPROCKET.
SWB	N	10/26/98	DJL	FLIPPED CHAIN SPROCKET (ITEM 23) OVER TO PROVIDE BETTER CHAIN ALIGNMENT. ITEM 54 (MJQ00332 5/16 KEY X 3/4 LG.) WAS CHANGED TO MCK00041 (5/16 KEY X 1/2" LG.).
TLW	P	02/08/00	BWW	UPDATED DRAWING TO SHOW SPROCKET AND SPACER REVISION. REVISED ITEM #23 MDF00068 TO MDF00073 CHAIN SPROCKET, ITEM #51 3629101 TO 3629103 FACER SPROCKET SPACER, REMOVED ITEM #54 MCK00041 KEY, AND ADDED NOTE 9.
SWB	Q	06/08/01	MLM	REVISED TO ADD ITEM#59(MBG00002). ADDED TO RETRACT SHOULDER OF MAF00051 SCREW TO ALLOW ASSY. TIGHTENING.
SWB	R	07/06/01	BWW	REVISED TO REMOVE ITEMS 5 MAA00386, 6 MAC00143, AND 58 3611701. CHANGED QTY OF ITEM #16 MBB00029 FROM 3 TO 1. ITEMS CHANGED AND REMOVED WERE FOUND TO BE UNNECESSARY.
SWB	S	08/05/02	BWW	REMOVED ITEM 26 MAC00149 AND CHANGED QTY OF ITEM 11 MAC00150 FROM 3 TO 6. CHANGE MADE TO MATCH AS BUILT CONDITION.
SWB	T	3/18/03	RLE	REVISED NOTES TO AGREE WITH ENGINEERING STANDARDS.
LAA	---	9/3/03	ALK	REVISED ITEM #2 FROM MEC00006 DAN FOSS MOTOR TO MEC00032 PARKER MOTOR.
SWB	U	4/2/04	BWW	REVISED ITEM 2 MEC00032 TO MEC00006 BECAUSE MEC00032 IS NOW BACKWARDS COMPATIBLE WITH MEC00006.
SWB	V	12/28/06	ARB	UPDATED VIEWS TO REFLECT NEW BLADE HOLDER DESIGN.