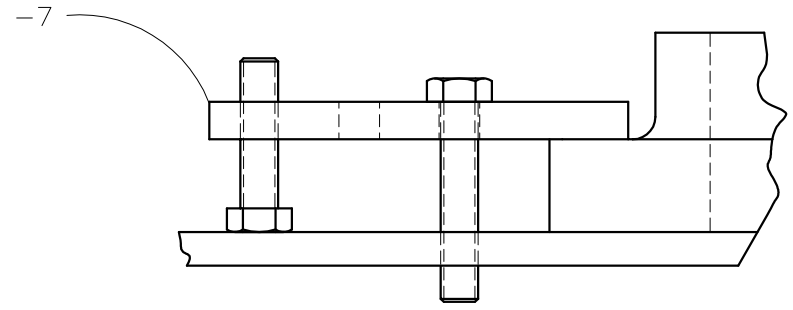
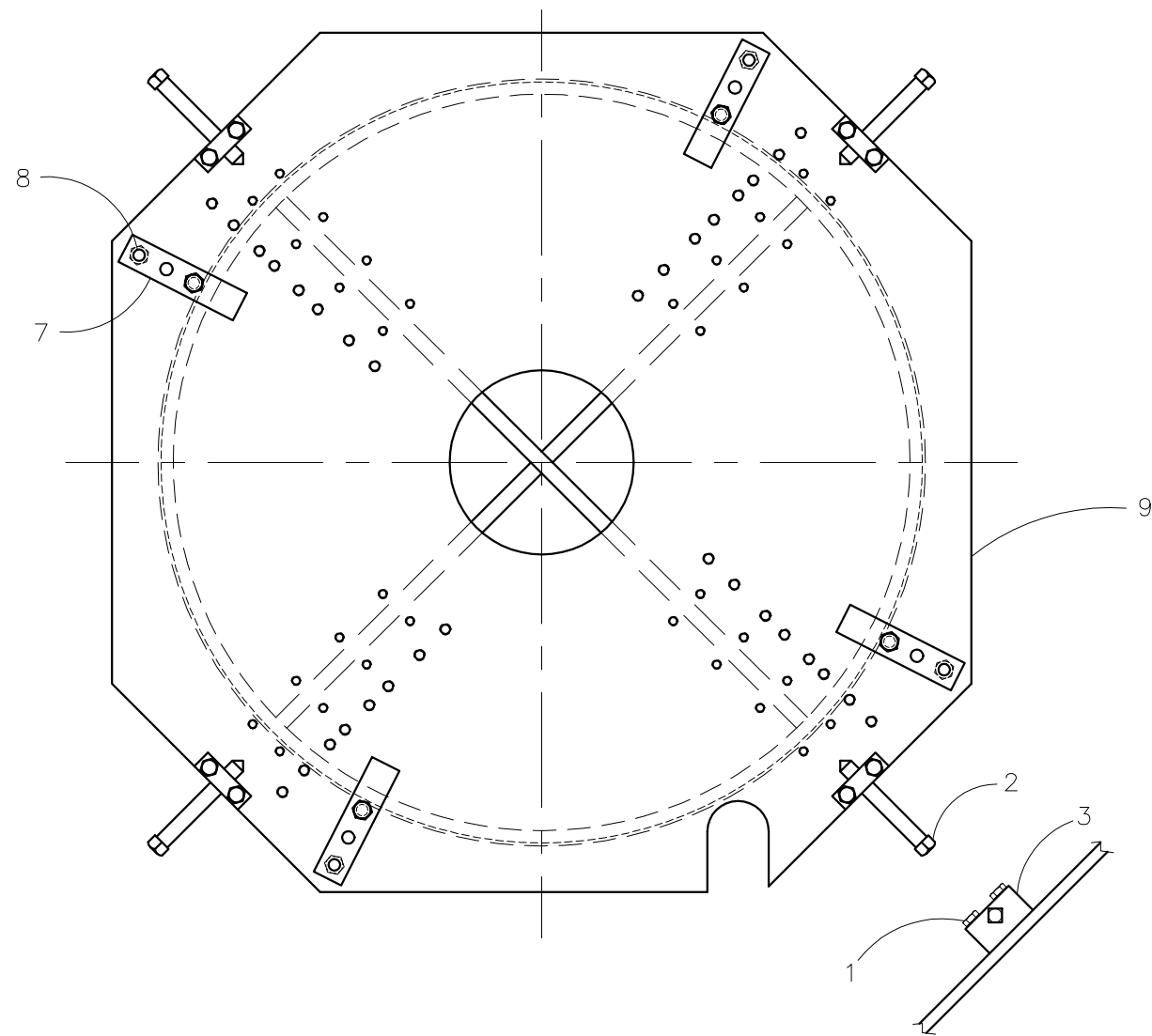




McElroy Manufacturing, Inc.
 The leader by design.
 Tulsa, Oklahoma U.S.A.

DRAWN: MRP	CHECK: BWP	APPRV'D: TLW	DATE: 7/2/98	DWG No: 2419500	SHT No: 1	REV No: S	PART No: 2419501
#824 STUB END HOLDER ASSEMBLY							CAD No: 2419501

NOTE: THIS DRAWING AND THE INFORMATION CONTAINED THEREIN IS THE CONFIDENTIAL AND PROPRIETARY PROPERTY OF McElroy Manufacturing, Inc. THE DRAWING IS NOT TO BE REPRODUCED IN ANY MANNER, SUBMITTED OUTSIDE PARTIES FOR EXAMINATION, OR USED DIRECTLY OR INDIRECTLY FOR THE PURPOSES OTHER THAN THOSE FOR WHICH IT WAS FURNISHED WITHOUT WRITTEN PERMISSION OF McElroy Manufacturing, Inc.



TYPICAL CLAMPING DETAIL
 USING A4812608 CLAMP KIT

UNLESS NOTED OTHERWISE: (3) PLC. DIM'S .XXX = ±0.005" (2) PLC. DIM'S .XX = ±0.010" FRACTIONAL DIM'S = ±1/32" ANGULAR DIM'S = ±1/4' REMOVE ALL BURRS BREAK ALL SHARP EDGES STAMP OR ETCH P/N ON ALL DETAIL PARTS

MMI NUMBER	ITEM	QTY.	ASSEMBLY	SIZE AND DESCRIPTION

#824 STUB END HOLDER ASSEMBLYParts List

ITEM	PART NO.	QTY.	DESCRIPTION
	2419501		ASSEMBLY
1	MAB00035	8	5/16-18 NC X 1-1/2" LG. HHCS
2	805703	4	CLAMP SCREW
3	3614401	4	CLAMP BLOCK
4	2426201	1	REST BUTTON SPACER (NOT SHOWN)
5	2426202	2	REST BUTTON SPACER (NOT SHOWN)
6			
7	A4812608	1	24/36/48 STUB END CLAMP KIT
8	MJM00003	36	KEENSERT
9	2419502	1	STUB END HOLDER

NOTES:

1. ITEMS #4 & #5 CAN BE USED OVER THE FACER STOPS IN THE MOVABLE JAW FOR EXTENSIONS.
2. INSTALL IN INNER MOVEABLE JAW ONLY.

DRAWING REVISION HISTORY LISTING

PART NO: 2419501
DESCRIPTION: #824 STUB END HOLDER ASSEMBLY

<u>APPR.</u>	<u>REV</u>	<u>DATE</u>	<u>BY</u>	<u>DESCRIPTION OF REVISION</u>
TLW	Q	7/2/98	MRP	REDRAWN TO "A" SIZE. PLACED 2419502 STUB END HOLDER ON SHT 2 & PLACED 2419503 STUB END HOLDER WELDMENT ON SHT 3. 2419503 WELDMENT WAS 2419502.
TLW	R	4/5/01	RLE	REMOVED MAC00098 QTY. (4) & REVISED 4812605 QTY.(4) TO A4812608 QTY. (1). REVISION IS TO USE STANDARD BOLTS & CLAMP FOR 24/36/48 STUB END HOLDER & ALLOW FOR CLAMPING ON ADDITIONAL STUB END SIZES. REMOVED NOTE "LOCATIONS TO FIT FLANGES OF PHILLIPS STUB ENDS. ADDITIONAL HOLES MAY BE REQUIRED FOR OTHER MFG'S. STUB ENDS." SINGLE ADDITIONAL SIZES ARE NOW POSSIBLE.
SWB	S	9/7/01	MLM	ADDED SIDE VIEW TO CLARIFY ORIENTATION OF CLAMP BLOCK.