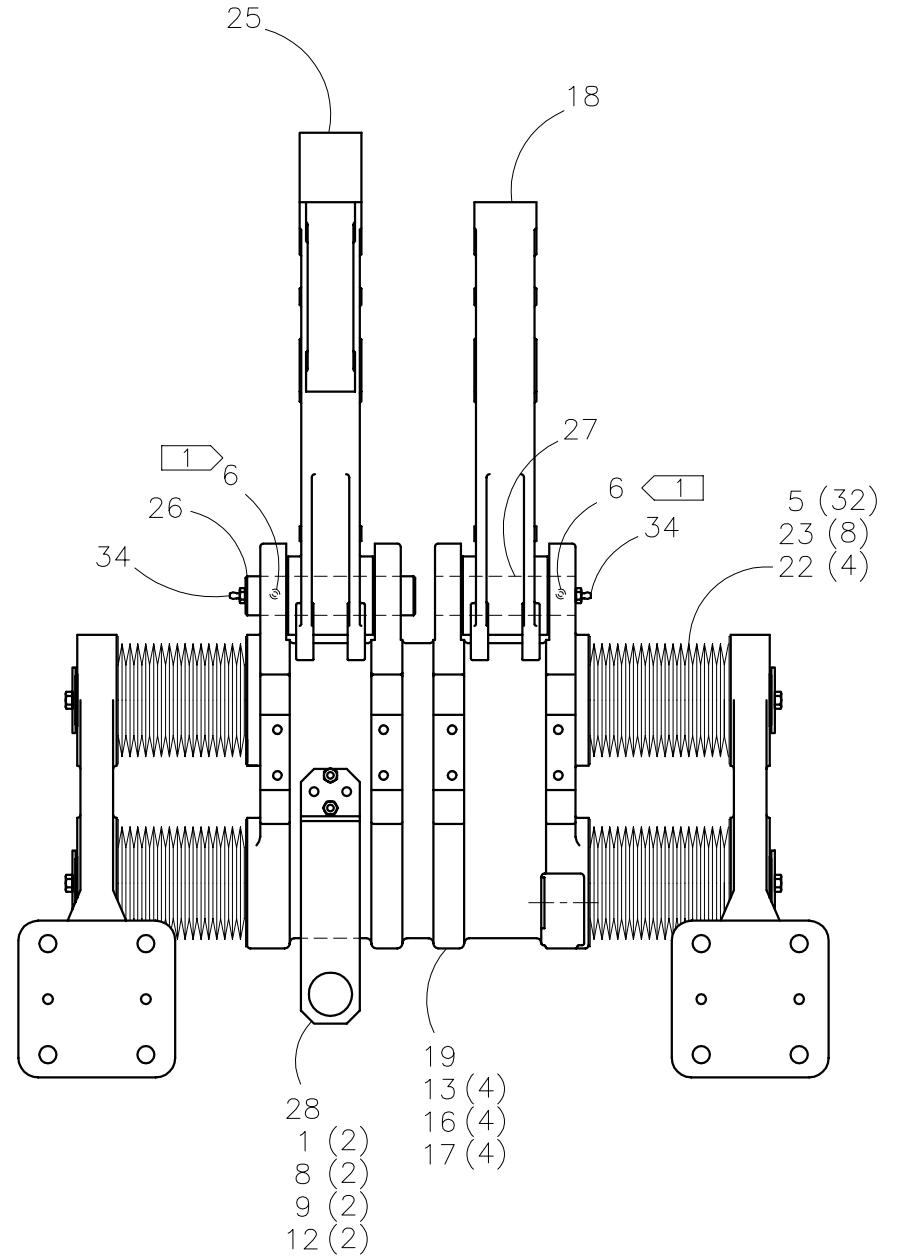
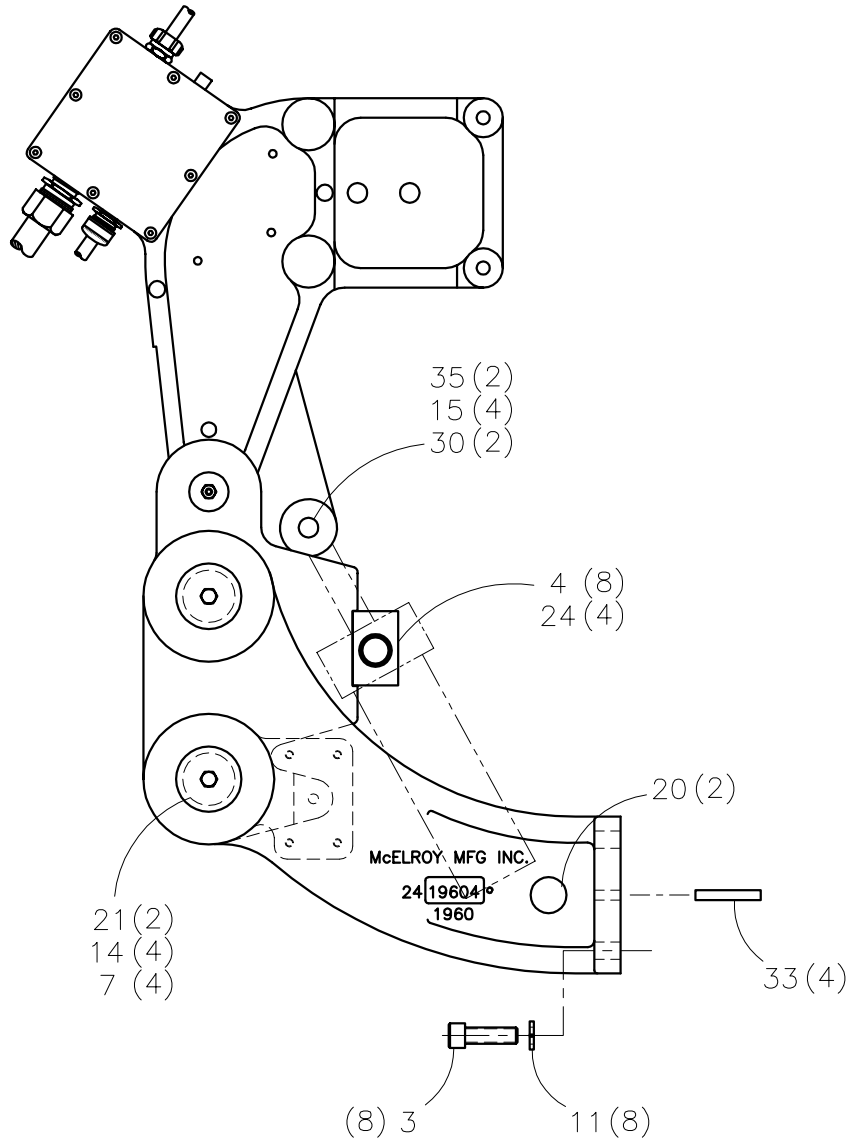




McElroy Manufacturing, Inc.
 The leader by design.
 Tulsa, Oklahoma U.S.A.

DRAWN: TGW	CHECK: TLW	APPRV'D: SWB	DATE: 10/29/98	DWG No: 2403000	SHT No: 1	REV No: B	PART No: 2403001
#824A INDEXING CARRIAGE ASSEMBLY							CAD No: 2403001

NOTE: THIS DRAWING AND THE INFORMATION CONTAINED THEREIN IS THE CONFIDENTIAL AND PROPRIETARY PROPERTY OF McElroy Manufacturing, Inc. THE DRAWING IS NOT TO BE REPRODUCED IN ANY MANNER, SUBMITTED TO OUTSIDE PARTIES FOR EXAMINATION, OR USED DIRECTLY OR INDIRECTLY FOR THE PURPOSES OTHER THAN THOSE FOR WHICH IT WAS FURNISHED WITHOUT WRITTEN PERMISSION OF McElroy Manufacturing, Inc.



#824A INDEXING CARRIAGE ASSEMBLYPARTS LIST

ITEM	PART NO.	QTY	DESCRIPTION
	2403001		ASSEMBLY
1	MAA00034	2	5/16-18 NC X 1-1/4" LG. HHCS
2			
3	MAC00165	8	5/8-11 NC X 2" LG. SHCS
4	MAC00338	8	3/8-24 NF X 2" LG. SHCS
5	MAE00009	32	#6-32 NC X 3/8" LG. BHSCS
6	MAG00011	2	1/4-20 NC X 3/4" LG. CONE PT SS
7	MAB00077	4	3/8-16NC X 1" LG HHCS
8	MBA00006	2	5/16-18 NC HEX NUT
9	MBE00006	2	5/16" LOCK WASHER
10			
11	MBE00011	8	5/8" LOCK WASHER
12	MBF00006	2	5/16" FLAT WASHER
13	MCA00002	4	INT SNAP RING
14	MBG00064	4	3/8" SPECIAL FLAT WASHER
15	MCH00001	4	1/8" DIA. X 1" LG. COTTER PIN
16	MDL00047	4	SEAL
17	MDM00037	4	BALL BUSHING
18	2419705	1	FACER PIVOT ARM ASSEMBLY
19	3602602	1	INDEXING CARRIAGE
20	2419604	2	CARRIAGE SUPPORT ARM
21	3605703	2	CARRIAGE SUPPORT SHAFT
22	3605901	4	INDEXING CARRIAGE BOOT
23	3605902	8	INDEXING CARRIAGE BOOT FLANGE
24	3607101	4	INDEXING CARRIAGE TRUNNION FITTING
25	3608002	1	PIVOT ARM/JUNCTION BOX - HEATER
26	3609101	1	HEATER PIVOT ARM SHAFT
27	2402101	1	FACER PIVOT ARM SHAFT
28	3611301	1	ELECTRICAL CABLE MOUNT BRKT.
29			
30	3617101	2	CYLINDER ROD CLEVIS PIN
31			
32			
33	MCI00002	4	3/8" DIA X 1-1/2" LG DOWEL PIN
34	MFJ00001	2	1/4-28NF GREASE ZERK
35	1237301	2	FEMALE ROD EYE

NOTES:

1. INSTALL WITH LOCTITE 242.

DRAWING REVISION HISTORY LISTING

PART NO: 2403001
DESCRIPTION: #824A INDEXING CARRIAGE ASSEMBLY

<u>APPR.</u>	<u>REV</u>	<u>DATE</u>	<u>BY</u>	<u>DESCRIPTION OF REVISION</u>
TLW	A	5/25/99	MRP	REMOVED HEATER FACER STOP BRACKET ITEM #29 (3614004) THAT WAS ADDED BY MISTAKE WHEN MODULARIZED.REMOVED ITEM #2 MAA00126 QTY 8, ITEM #10 MBE00009 QTY 8, ITEM #31 MAA00158 QTY 2, AND ITEM #32 MBA00011 QTY 2.
SWB	B	01/11/05	BWW	ADDED NOTE 1 TO LOCTITE AT ASSEMBLY TO MATCH AS BUILT CONDITION.