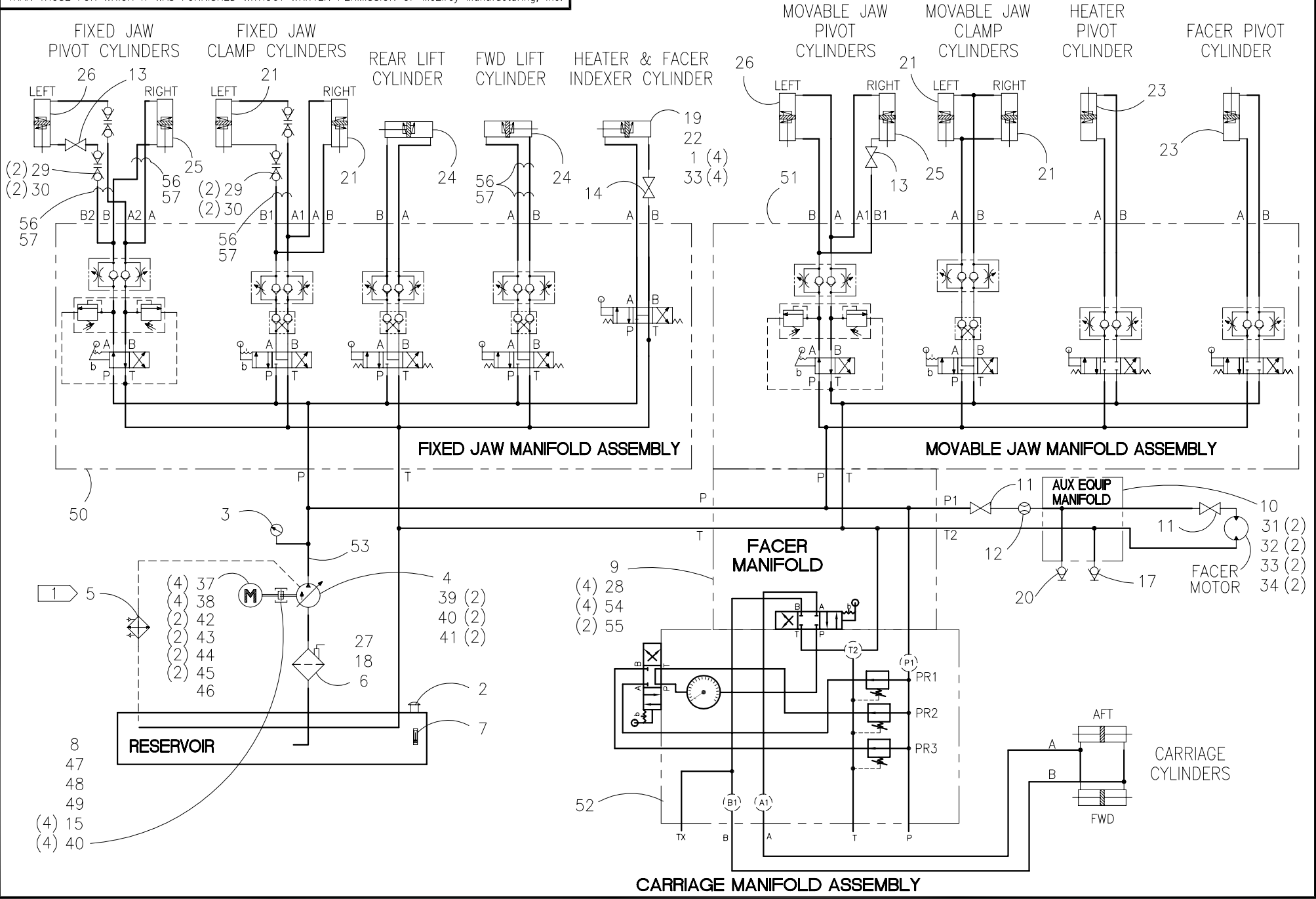




NOTE: THIS DRAWING AND THE INFORMATION CONTAINED THEREIN IS THE CONFIDENTIAL AND PROPRIETARY PROPERTY OF McElroy Manufacturing, Inc. THE DRAWING IS NOT TO BE REPRODUCED IN ANY MANNER, SUBMITTED TO OUTSIDE PARTIES FOR EXAMINATION, OR USED DIRECTLY OR INDIRECTLY FOR THE PURPOSES OTHER THAN THOSE FOR WHICH IT WAS FURNISHED WITHOUT WRITTEN PERMISSION OF McElroy Manufacturing, Inc.



#824A HYDRAULIC SCHEMATICPARTS LIST

ITEM	PART NO.	QTY	DESCRIPTION
	2400801		ASSEMBLY
1	MAB00033	4	5/16-18NC X 1 LG HHCS
2	MFK00002	1	FILLER CAP
3	MEE00005	1	1500PSI/BAR PRESSURE GAUGE
4	MEA00017	1	VANE PUMP
5	MJQ00344	1	OIL COOLER
6	MED00016	1	FILTER HEAD
7	MEE00014	1	5" SIGHT GAUGE W/THERMOMETER
8	MEA00045	1	PUMP ADAPTER
9	3601201	1	FACER MANIFOLD
10	3601401	1	AUXILIARY EQUIPMENT MANIFOLD
11	MEI00003	2	1/2NPT BALL VALVE
12	MEP00014	1	1/2NPTF FLOW METER
13	MEI00001	2	3/8NPT BALL VALVE
14	MEI00005	1	1/4NPT BALL VALVE
15	MAN00017	4	1/2-13NC X 1-1/4 LG SHCS SS
16			
17	MFH00003	1	3/8FNPT QUICK DISC COUPLER
18	MED00018	1	FILTER ELEMENT
19	MEK00005	1	ROD COUPLER
20	MFH00004	1	3/8FNPT QUICK DISC NIPPLE
21	MEB00129	4	3-1/4B X 4S HYD CYLINDER
22	MEB00124	1	2B X 7S HYD CYLINDER
23	MEB00020	2	2-1/2B X 6S X 1R HYD CYLINDER
24	MEB00121	2	4B X 4S HYD CYLINDER
25	MEB00057	2	1-1/2B X 6S X 1R HYD CYLINDER
26	MEB00058	2	1-1/2B X 6S X 1R HYD CYLINDER
27	MFI00085	1	1-1/2NPT CLOSE NIPPLE
28	MDL00137	4	O-RING
29	MFH00001	4	1/4FNPT QUICK DISC COUPLER
30	MFH00002	4	1/4FNPT QUICK DISC NIPPLE
31	MAC00085	2	5/16-18NC X 3-1/2" LG SHCS
32	MBA00006	2	5/16-18NC FINISHED HEX NUT
33	MBE00006	8	5/16" REG SPLIT LOCK WASHER
34	MBF00006	2	5/16" TYPE 'A' WIDE FLT WASHER
35			
36			
37	MAB00065	4	3/8-16NC X 1-1/4" LG HHCS

#824A HYDRAULIC SCHEMATICPARTS LIST

ITEM	PART NO.	QTY	DESCRIPTION
38	MBE00007	6	3/8" REGULAR SPLIT LOCK WASHER
39	MAB00069	2	1/2-13NC X 1-1/2"LG HHCS
40	MBE00009	6	1/2" REGULAR SPLIT LOCK WASHER
41	MBF00009	2	1/2" TYPE 'A' WIDE FLAT WASHER
42	MAB00003	2	1/4-20NC X 3/4"LG HHCS
43	MBA00005	2	1/4-20NC HEX NUT
44	MBE00005	2	1/4" REG SPLIT LOCK WASHER
45	MLN00070	2	3/4" CONDUIT STRAP, 1 HOLE, MAL
46	3616601	1	MOTOR HOSE BRACKET
47	MDJ00031	1	COUPLING
48	MDJ00032	1	COUPLING
49	MDJ00033	1	COUPLING INSERT
50	2424605	1	#824 FIXED JAW MANIFOLD ASSEMBLY
51	2424604	1	#824/#1236 MOVABLE JAW MANIFOLD ASSEMBLY
52	3600502	1	CARRIAGE MANIFOLD ASSEMBLY
53	2412701	1	MANIFOLD WELDMENT
54	MAC00083	4	5/16-18NC X 3 LG SHCS
55	MAC00101	2	3/8-16NC X 2-3/4 LG SHCS
56	MHA00033	5	1/2 HOSE CLAMP
57	MAH00050	5	1/4-20NC x 1/2 LG SHCS SS

NOTES:

1. FOR MACHINES PRODUCED PRIOR TO JAN 05, ORDER A2465301 TO REPLACE HYDRAULIC COOLER.

DRAWING REVISION HISTORY LISTING

PART NO: 2400801
DESCRIPTION: #824A HYDRAULIC SCHEMATIC

<u>APPR.</u>	<u>REV</u>	<u>DATE</u>	<u>BY</u>	<u>DESCRIPTION OF REVISION</u>
SWB	D	04/25/95	SWB	IGES FROM BRAVO. CREATED TYPED PARTS LIST. REDUCED TO 'A' SIZE FORMAT.
SWB	E	02/21/97	AH	REVERSED HYDRAULIC CYLINDER PORTS A & B, ON FIXED JAW PIVOT, FIX JAW CLAMP, AFT LIFT, MOVABLE JAW PIVOT, & MOVABLE JAW CLAMP CYLINDERS TO MATCH DRAWING 2400802.
SWB	F	10/30/98	TGW	REVISED TO ADD P/N'S FOR MANIFOLD ASSEMBLIES (ITEMS 50 THRU 53) & REMOVED INDIVIDUAL COMPONENT P/N'S. RENUMBERED BILL OF MATERIAL. ADDED ITEMS 35 THRU 55. ADDED HARDWARE TO MOUNT OIL COOLER, ELECTRIC MOTOR, VANE PUMP & MOTOR HOSE BRACKET & HARDWARE. REMOVED ELECTRIC MOTOR AND HYDRAULIC MOTOR P/N's. REMOVED P/N MFC00071 - CALLED OUT ON PLUMBING SCHEMATIC P/N 2400802. ADDED PUMP ADAPTER, COUPLINGS & MOUNTING BOLTS. CORRECTED PORT DESIGNATIONS TO AS-BUILT.
TLW	-	05/25/99	MRP	CHANGED ITEM 50 FROM 2424603 FIXED JAW MANIFOLD ASSEMBLY TO 2424601 FIXED JAW MANIFOLD ASSEMBLY.
SWB	G	06/03/99	MLM	REVISED CARRIAGE & FACER MANIFOLD ARRANGEMENT TO CLOSER REPRESENT PHYSICAL LAYOUT.
SWB	-	11/04/99	TLW	CORRECTED ITEM #50 2424601 FIXED JAW MANIFOLD TO NEW 2424605 FIXED JAW MANIFOLD. 2424601 DID NOT HAVE MODIFIED MANIFOLD AND DIRECTIONAL VALVE REQUIRED FOR THIS ASSEMBLY.
LAA	-	04/15/03	BWW	CHANGED ITEM 21 FROM MEB00014 TO MEB00123, ITEM 22 FROM MEB00015 TO MEB00124, AND ITEM 24 FROM MEB00017 TO MEB00121. CHANGES MADE TO INCORPORATE CARLSON WELDED CYLINDERS.
BWJ	H	12/21/04	BWW	REVISED ITEM 21 FROM MEB00123 TO MEB00129. MEB00129 REPLACES MEB00123. ADDED ITEM 56 MHA00033 QTY 5 AND ITEM 57 MAH00050 QTY 5 TO SECURE HOSES AND TO MATCH AS BUILT CONDITION.
SPA	J	06/23/05	JAB	REVISED TO CHANGE ITEM 5 FROM (MJQ00058) TO (MJQ00344), AND ELIMINATED ITEMS 35 (MAB00039) AND 36 (MBG00022). ALSO, CHANGED QTY OF ITEM 32 (MBA00006) FROM 5 TO 2 AND ITEM 33 (MBE00006) FROM 11 TO 8 DUE TO AVAILABILITY OF THE HYDRAULIC COOLER. ADDED NOTE #1 FOR REPLACEMENT COOLER. REVISED ITEM 15 FROM (MAC00141) TO (MAN00017) AND ITEM 16 FROM (MBE00021) QTY 4 TO ITEM 40 (MBE00009) QTY 6, TO MATCH AS BUILT.