

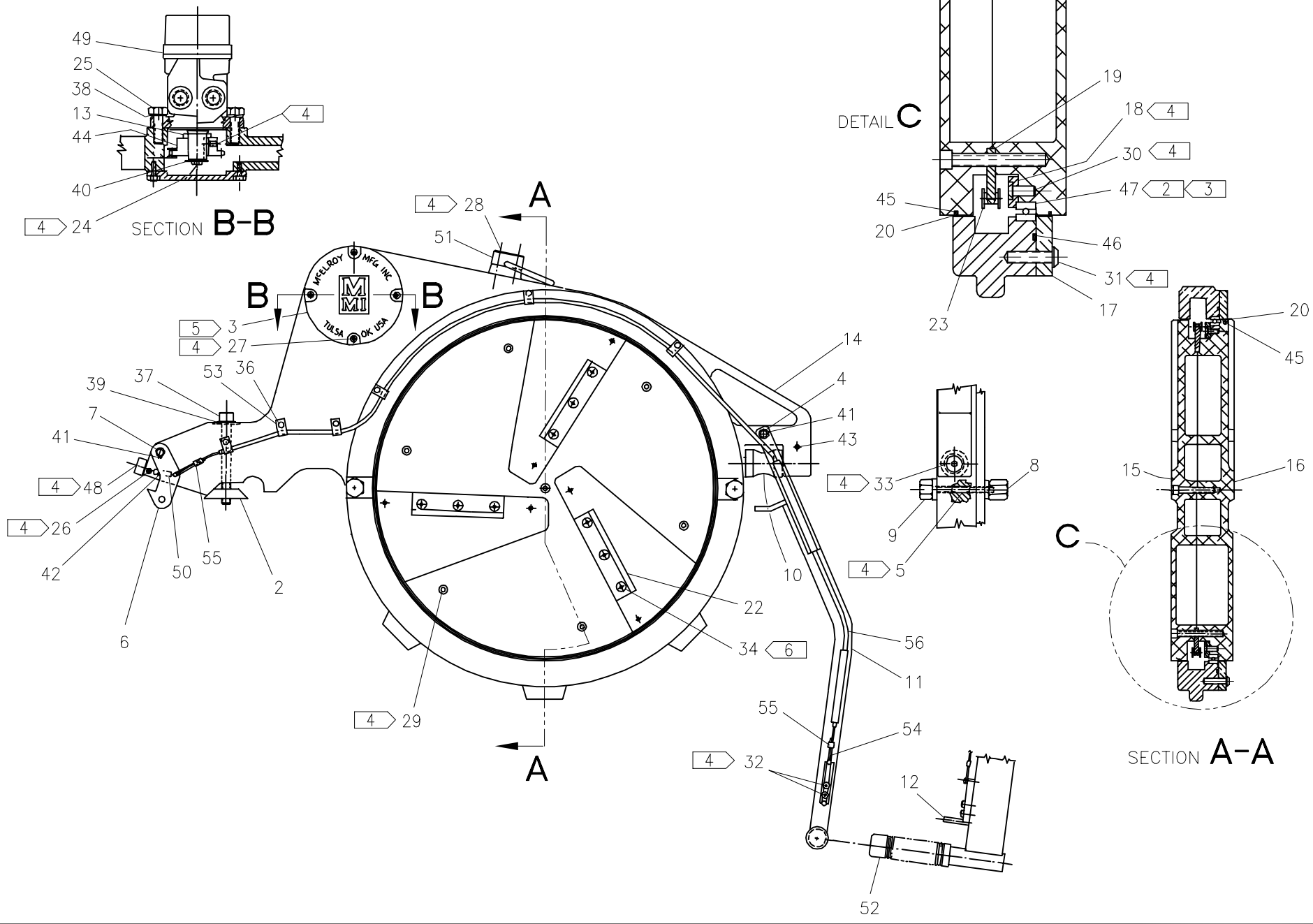


McElroy Manufacturing, Inc.
 The leader by design.
 Tulsa, Oklahoma U.S.A.

DRAWN: SWB CHECK: JRP APPRV'D: B DATE: 4/25/95 DWG No: 1834100 SHT No: 1 REV No: J PART No: 1834101

#618 FACER ASSEMBLY CAD No: 1834101

NOTE: THIS DRAWING AND THE INFORMATION CONTAINED THEREIN IS THE CONFIDENTIAL AND PROPRIETARY PROPERTY OF McElroy Manufacturing, Inc. THE DRAWING IS NOT TO BE REPRODUCED IN ANY MANNER, SUBMITTED OUTSIDE PARTIES FOR EXAMINATION, OR USED DIRECTLY OR INDIRECTLY FOR THE PURPOSES OTHER THAN THOSE FOR WHICH IT WAS FURNISHED WITHOUT WRITTEN PERMISSION OF McElroy Manufacturing, Inc.



#618 FACER ASSEMBLYPARTS LIST

ITEM	PART NO.	QTY	DESCRIPTION
	1834101		ASSEMBLY
1			
2	816101	1	WEDGE
3	1231102	1	COVER PLATE
4	1225402	1	LATCH HANDLE PIVOT PIN
5	1804102	2	REST BUTTONS MOUNTING SCREW
6	1805501	1	LATCH
7	1806702	1	LATCH PIVOT PIN
8	1807001	2	REST BUTTON
9	1807002	2	REST BUTTON
10	1809101	1	GUIDE ROD ROLLER
11	1817302	1	LATCH HANDLE
12	1818703	1	RELEASE TRIGGER
13	1835401	1	SPACER
14	1837502	1	FACER BODY
15	1837603	1	C'BORED BLADE HOLDER
16	1837604	1	TAPPED BLADE HOLDER
17	1837702	1	FACER BODY BEARING RETAINER
18	1837803	1	BLADE HOLDER BEARING RETAINER
19	1838101	1	DRIVEN SPROCKET MODIFICATION
20	1838201	2	SLIPPER SEAL
21	1834103	1	FACER HYDRAULIC/PLUMBING SCHEMATIC (NOT SHOWN)
22	3615703	1	FACER BLADE SET
23	A1812401	1	18" FACER CHAIN ASSEMBLY
24	MAB00002	1	1/4-20NC x 1/2 LG. HHCS
25	MAB00069	2	1/2-13NC x 1-1/2 LG. HHCS
26	MAC00035	1	10-24NC x 3/8 LG. SHCS
27	MAH00052	4	1/4-20NC x 3/4 LG. SHCS SS
28	MAC00075	2	5/16-18NC x 1" LG. SHCS
29	MAC00078	7	5/16-18NC x 1-3/4 LG. SHCS
30	MAD00043	12	1/4-20NC x 5/8 LG. FHSCS
31	MAE00047	10	5/16-18NC x 1-1/4 LG. BHSCS
32	MAF00001	2	1/4 DIA. x 3/8 LG. SOCKET HEAD SHOULDER SCREW
33	MAF00069	1	5/8 DIA. x 3" LG. SOCKET HEAD SHOULDER SCREW
34	MAH00073	18	1/4-20NC x 5/8 LG. FHSCS SS
35			

#618 FACER ASSEMBLYPARTS LIST

ITEM	PART NO.	QTY	DESCRIPTION
36	MAH00111	6	#10-24NC x 1/2 LG. HHWF ROLL FORMING TAPPING SCREW
37	MAN00019	1	1/2-13NC x 4-1/2 LG. SHCS SS
38	MBE00009	2	1/2" REGULAR SPLIT LOCK WASHER
39	MBF00009	1	1/2" TYPE 'A' WIDE FLAT WASHER
40	MBG00031	1	1/4" FENDER WASHER
41	MCB00017	4	EXT SNAP RING
42	MCG00005	1	3/16 DIA. x 1" LG. ROLL PIN
43	MCG00012	1	1/4 DIA. x 2-1/2 LG. ROLL PIN
44	MDF00028	1	CHAIN SPROCKET
45	1838202	2	BLADE HOLDER O-RING
46	1838203	1	FACER BODY O-RING
47	MDM00032	1	BALL BEARING
48	MDM00055	1	CAM FOLLOWER
49	MEC00004	1	HYD MOTOR
50	MJE00001	1	SPRING
51	MJH00001	1	HOIST RING
52	MJJ00002	1	HAND GRIP
53	MJQ00024	6	JIFFY CLIP
54	1824601	1	TRIGGER CABLE
55	MJQ00046	2	FERRULE
56	1824701	1	CABLE GUIDE

NOTES:

1. FILL FACER CAVITY 2/3 FULL WITH EP GREASE.
2. PACK BEARINGS WITH EP GREASE.
3. INSTALL WITH HIGH STRENGTH RETAINING COMPOUND USING A COMPATIBLE CLEANER FIRST.
4. INSTALL WITH MEDIUM STRENGTH THREAD LOCKING COMPOUND.
5. INSTALL WITH GASKET SEALER.
6. INSTALL WITH HIGH TEMPERATURE ANTI-SEIZE COMPOUND.
7. BLADE HOLDER BEARING RETAINER DESIGN WAS IMPROVED ON MACHINES PRODUCED AFTER MID FEBRUARY 2001. THE NEW RING IS ATTACHED WITH FLAT HEAD SCREWS INSTEAD OF BUTTON HEAD SCREWS. ORDER KIT A1837803 FOR REPLACEMENT RING 1837803 & QTY (12) MAD00043 SCREWS.

DRAWING REVISION HISTORY LISTING

PART NO: 1834101
DESCRIPTION: #618 FACER ASSEMBLY

<u>APPR.</u>	<u>REV</u>	<u>DATE</u>	<u>BY</u>	<u>DESCRIPTION OF REVISION</u>
B	B	04/25/95	SWB	SCANNED & REDUCED TO 'A' SIZE FORMAT.
SWB	C	02/11/97	SS	RE-NUMBERED BOM. CHANGED ITEM #37 MAA00137 HEX HEAD BOLT TO MAN00019 STAINLESS SOCKET CAP SCREW SO THE 3/8 HEX WRENCH CAN BE USED ON ALL REMOVEABLE BOLTS.
SWB	D	03/04/97	RLE	CORRECTED DRAWING BY REMOVING ITEM #1, 410904 McELROY NAMEPLATE, & ITEM #35, MAH00093 #4-40NC x 3/16" LG. STICK SCREW, WE STOPPED SERIALIZING FACERS IN 1995.
SWB	E	04/01/97	SS	CHANGED ITEM # 29 MAC00079 TO MAC00078 BECAUSE OF PROBLEMS TAPPING THAT DEEP ON THE MACHINE.
TLW	--	02/25/98	RLE	ITEM 54, MJQ00025, QTY. WAS (1), ITEM 56, MJQ00027 QTY. WAS (1), & ITEM 55, MJQ00046, WAS MJQ00026.
TLW	F	07/09/99	RLE	REVISED ITEM #45 FROM MDL00077 TO 1838202, ITEM #46 FROM MDL00077 TO 1838203, ITEM #54 FROM MJQ00025 TO 1824601, ITEM #56 FROM MJQ00027 TO 1824701 & REMOVED NOTE #4. CREATED INDIVIDUAL DRAWINGS FOR THESE ITEMS IN ORDER TO SELL REPLACEMENT PARTS. NOTE #4 IS NOW ON DRAWINGS 1838202 & 1838203.
TLW	-	8/11/99	MRP	REVISED ITEM #27 FROM MAC00053 TO MAH00052.
SWB	G	02/09/01	BWW	REVISED TO ADD NOTE 6 TO ADVISE OF NEW BEARING RETAINER RING DESIGN. REVISED #18 BEARING RETAINER RING FROM 1837802 TO 1837803 & REVISED #30 MAE00032 TO MAD00043.
SWB	-	07/29/02	BWW	ADDED ITEM 21 1834103 QTY 1. CHANGE MADE TO BE CONSISTENT WITH OTHER FACER ASSEMBLIES.
SWB	H	2/5/03	ALK	REVISED TO ADD DETAIL C TO CLARIFY.
SWB	J	3/18/03	RLE	REVISED NOTES TO AGREE WITH ENGINEERING STANDARDS.