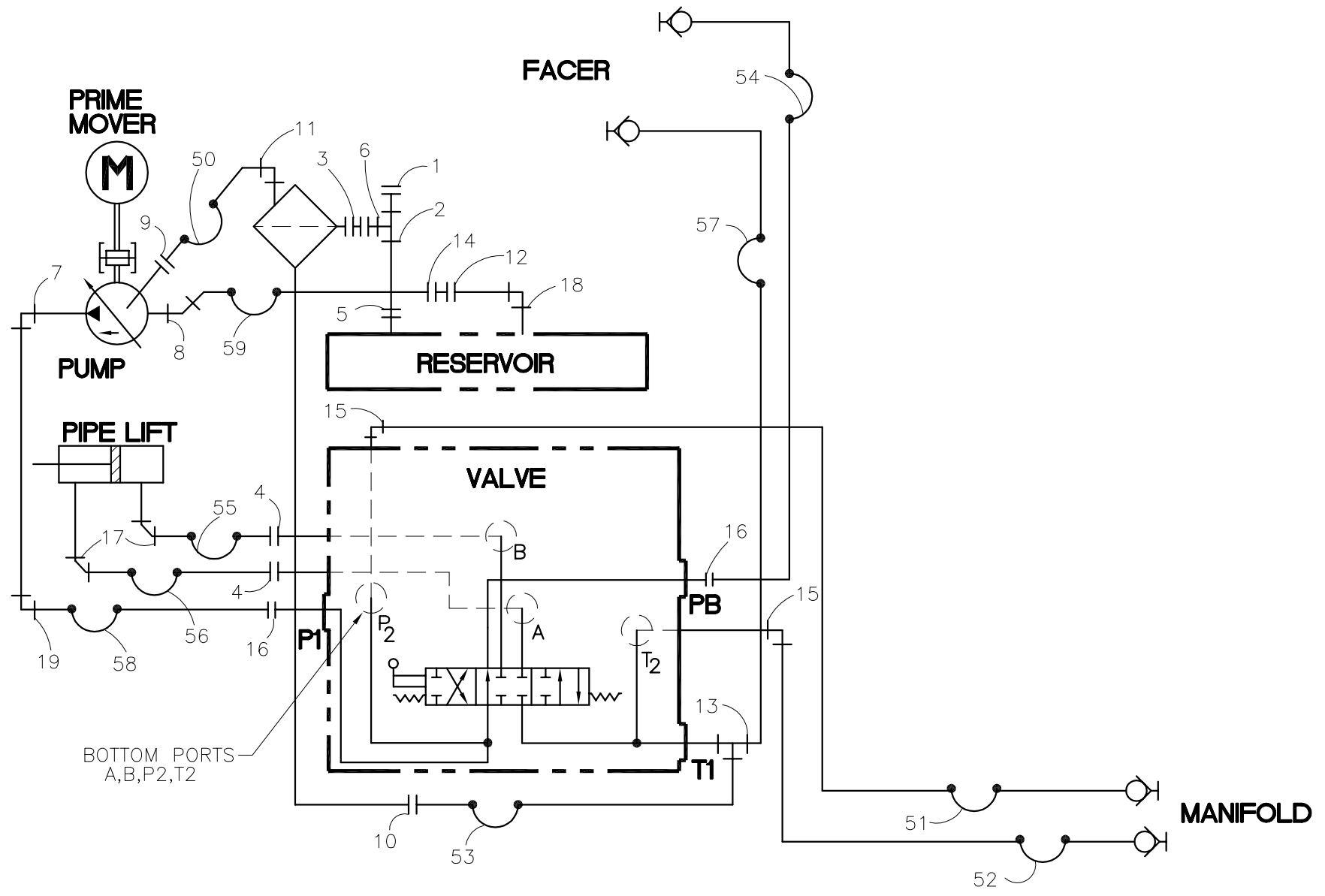




NOTE: THIS DRAWING AND THE INFORMATION CONTAINED THEREIN IS THE CONFIDENTIAL AND PROPRIETARY PROPERTY OF McElroy Manufacturing, Inc. THE DRAWING IS NOT TO BE REPRODUCED IN ANY MANNER, SUBMITTED OUTSIDE PARTIES FOR EXAMINATION, OR USED DIRECTLY OR INDIRECTLY FOR THE PURPOSES OTHER THAN THOSE FOR WHICH IT WAS FURNISHED WITHOUT WRITTEN PERMISSION OF McElroy Manufacturing, Inc.

- NOTES:
- FOR ITEMS 50 & LARGER ORDER KIT NUMBER A1822903.
 - END EDGES OF ITEMS 60 HOSE SLEEVE TO BE HEAT FUSED TO PREVENT FRAYING.



#412/#618 ROLLING POWER UNIT PLUMBING SCHEMATICParts List

ITEM	PART NO.	QTY.	DESCRIPTION
	1822903		ASSEMBLY
1	MFA00036	1	16MPT HEX HEAD PLUG
2	MFD00030	1	1" NPT TEE BLK MI ALK ZNC/GOLD IRD
3	MFI00027	1	1/2" NPT X CLOSE NIPPLE ALK ZNC/GOLD IRD
4	MFC00002	2	6MSAE/6MJIC ADAPTER
5	MFI00047	1	1" NPT X CLOSE NIPPLE ALK ZNC/GOLD IRD
6	MFA00150	1	16MPT/8FPT REDUCER
7	MFC00025	1	8MSAE/8MJIC ELBOW
8	MFC00026	1	12MSAE/16MJIC 45° ELBOW
9	MFC00027	1	8MSAE/6MJIC ADAPTER
10	MFB00040	1	8MPT/8MJIC ELBOW
11	MFB00004	1	2MPT/4MJIC ELBOW
12	MHC00015	1	16MPT/1" BARB HOSE END BR
13	MFC00037	1	8MSAE/8MJIC/8MJIC TEE
14	MFD00017	1	HOSE CLAMP
15	MFC00024	2	8MSAE/6MJIC ELBOW
16	MFC00006	2	8MSAE/8MJIC ADAPTER
17	MFB00042	2	8MPT/8MJIC 45 DEG ELBOW
18	MFD00051	1	1NPT ELBOW BLKMI ALK ZINC/GOLD IRD
19	MFB00111	1	8FSJIC/8MJIC 45° ELBOW

DRAWING REVISION HISTORY LISTING

PART NO: 1822903

DESCRIPTION: #412/#618 ROLLING POWER UNIT PLUMBING SCHEMATIC

<u>APPR.</u>	<u>REV</u>	<u>DATE</u>	<u>BY</u>	<u>DESCRIPTION OF REVISION</u>
SWB	A	11/18/05	JAB	MOVED NOTES TO FACE OF DRAWING.

#412/#618 ROLLING POWER UNIT HOSE KITParts List

ITEM	PART NO.	QTY.	DESCRIPTION
	A1822903		ASSEMBLY
50	HABBDD011	1	HOSE ASSEMBLY
51	HBABBD033	1	HOSE ASSEMBLY
52	HBABBD030	1	HOSE ASSEMBLY
53	HCBECE057	1	HOSE ASSEMBLY
54	HBADBE071	1	HOSE ASSEMBLY
55	HBEDD043	1	HOSE ASSEMBLY
56	HBEDD040	1	HOSE ASSEMBLY
57	HCADBE076	1	HOSE ASSEMBLY
58	HCBEDE043	1	HOSE ASSEMBLY
59	HNBIZZ036	1	HOSE ASSEMBLY
60	MFL00035	33 IN.	HOSE SLEEVE

DRAWING REVISION HISTORY LISTING

PART NO: A1822903

DESCRIPTION: #412/#618 ROLLING POWER UNIT HOSE KIT

<u>APPR.</u>	<u>REV</u>	<u>DATE</u>	<u>BY</u>	<u>DESCRIPTION OF REVISION</u>
SWB	A	11/18/05	JAB	MOVED NOTE TO FACE OF DRAWING.