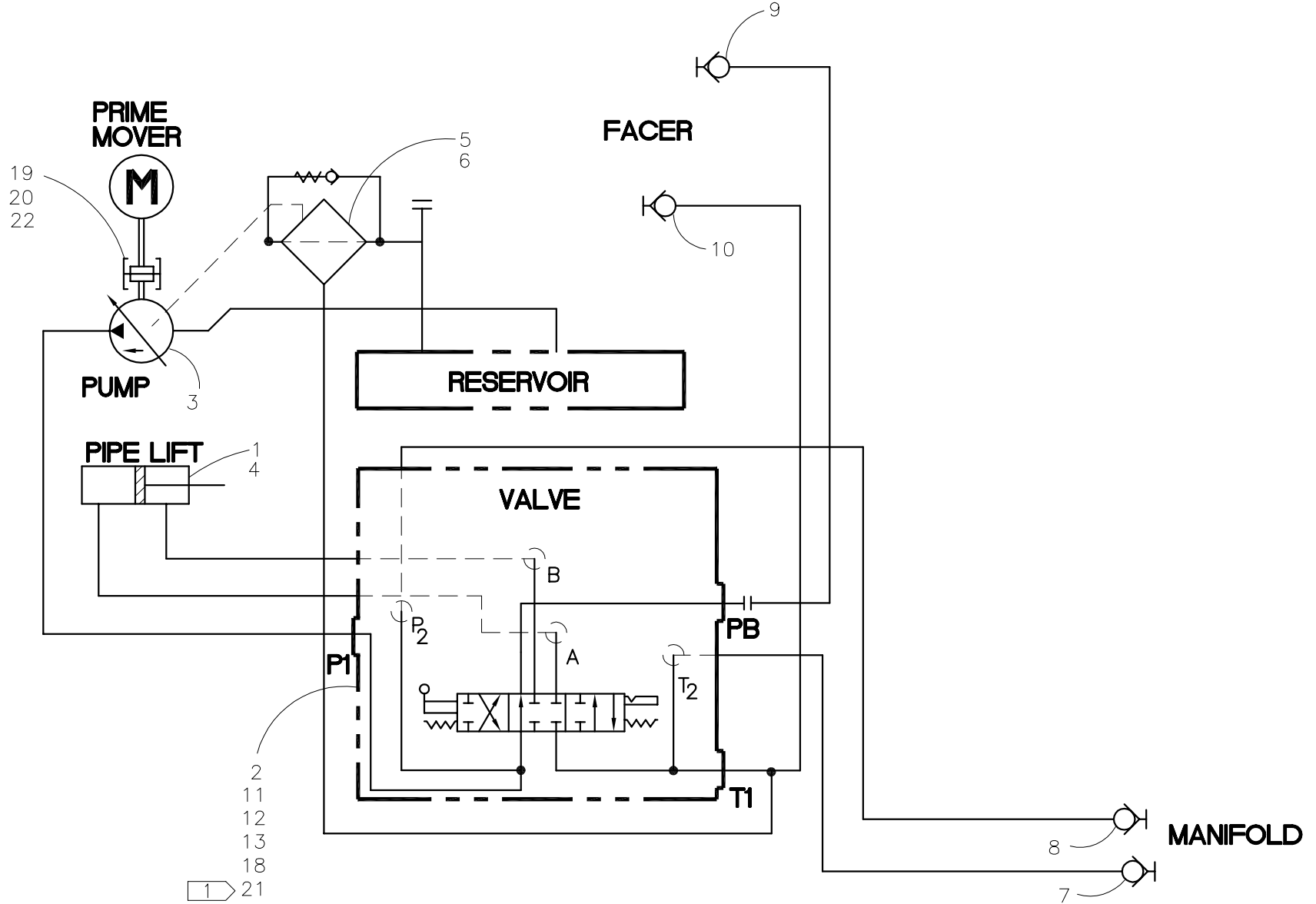




NOTE: THIS DRAWING AND THE INFORMATION CONTAINED THEREIN IS THE CONFIDENTIAL AND PROPRIETARY PROPERTY OF McElroy Manufacturing, Inc. THE DRAWING IS NOT TO BE REPRODUCED IN ANY MANNER, SUBMITTED TO OUTSIDE PARTIES FOR EXAMINATION, OR USED DIRECTLY OR INDIRECTLY FOR THE PURPOSES OTHER THAN THOSE FOR WHICH IT WAS FURNISHED WITHOUT WRITTEN PERMISSION OF McElroy Manufacturing, Inc.

- NOTES:
 1. VALVE HANDLE LEVER MEFO0077 ITEM 21 MUST BE PURCHASED SEPARATELY.



UNLESS NOTED OTHERWISE: (3) PLC. DIM'S .XXX = ±0.005" (2) PLC. DIM'S .XX = ±0.010" FRACTIONAL DIM'S = ±1/32" ANGULAR DIM'S = ±1/4" REMOVE ALL BURRS BREAK ALL SHARP EDGES STAMP OR ETCH P/N ON ALL DETAIL PARTS

			ASSEMBLY
MMI NUMBER	ITEM	QTY.	SIZE AND DESCRIPTION

#412/#618 ROLLING POWER UNIT HYDRAULIC SCHEMATICParts List

ITEM	PART NO.	QTY.	DESCRIPTION
	1822803		ASSEMBLY
1	1237301	1	FEMALE ROD EYE
2	MEF00079	1	DIRECTIONAL CONTROL VALVE
3	MEA00026	1	PISTON PUMP
4	MEB00128	1	3-1/2"B X 3"S HYD CYLINDER
5	MED00049	1	FILTER HEAD
6	MED00017	1	FILTER ELEMENT
7	MFH00001	1	1/4"FPT QUICK DISCONNECT COUPLER
8	MFH00002	1	1/4"FPT QUICK DISCONNECT NIPPLE
9	MFH00003	1	3/8"FPT QUICK DISCONNECT COUPLER
10	MFH00004	1	3/8"FPT QUICK DISCONNECT NIPPLE
11	MAB00040	2	5/16-18NC x 2 3/4 LG HHCS
12	MBE00006	2	5/16 LOCK WASHER
13	MBA00006	2	5/16-18NC LOCK NUT
14			
15			
16			
17			
18	816305	1	PIPE LIFT LABEL
19	MAB00064	4	3/8-16NC x 1" LG HHCS
20	MBE00007	4	3/8 REGULAR SPLIT LOCK WASHER
21	MEF00077	1	VALVE HANDLE LEVER
22	1813402	1	#412/#618 BEARING HOUSING ASSEMBLY

DRAWING REVISION HISTORY LISTING

PART NO: 1822803
DESCRIPTION: #412/#618 ROLLING POWER UNIT HYDRAULIC SCHEMATIC

<u>APPR.</u>	<u>REV</u>	<u>DATE</u>	<u>BY</u>	<u>DESCRIPTION OF REVISION</u>
DWP	A	6/2/99	MRP	ADDED DETENT TO ITEM 2 AND SWITCHED THE A AND B PORTS.
SWB	B	8/14/01	RLE	ADDED MEF00077, VALVE HANDLE LEVER, QTY. (2) BECAUSE HANDLE NO LONGER COMES WITH VALVE.
SWB	C	04/23/03	BWW	REVISED ITEM 4 FROM MEB00104 TO MEB00128 TO INCORPORATE CARLSON WELDED CYLINDER. REMOVED ITEMS 14 1813602, 15 1813501, 16 MDM00068 AND 17 MCB00009. ADDED ITEM 22 1813402 BEARING HOUSING ASSEMBLY QTY 1. ITEMS REMOVED ARE INCLUDED IN ASSEMBLY. ADDED NOTE 1 FOR ITEM 21 MEF00077 WHICH NO LONGER COMES WITH VALVE AND CHANGED QTY OF ITEM 21 FROM 2 TO 1.
SWB	D	11/18/05	JAB	MOVED NOTE TO FACE OF DRAWING.