



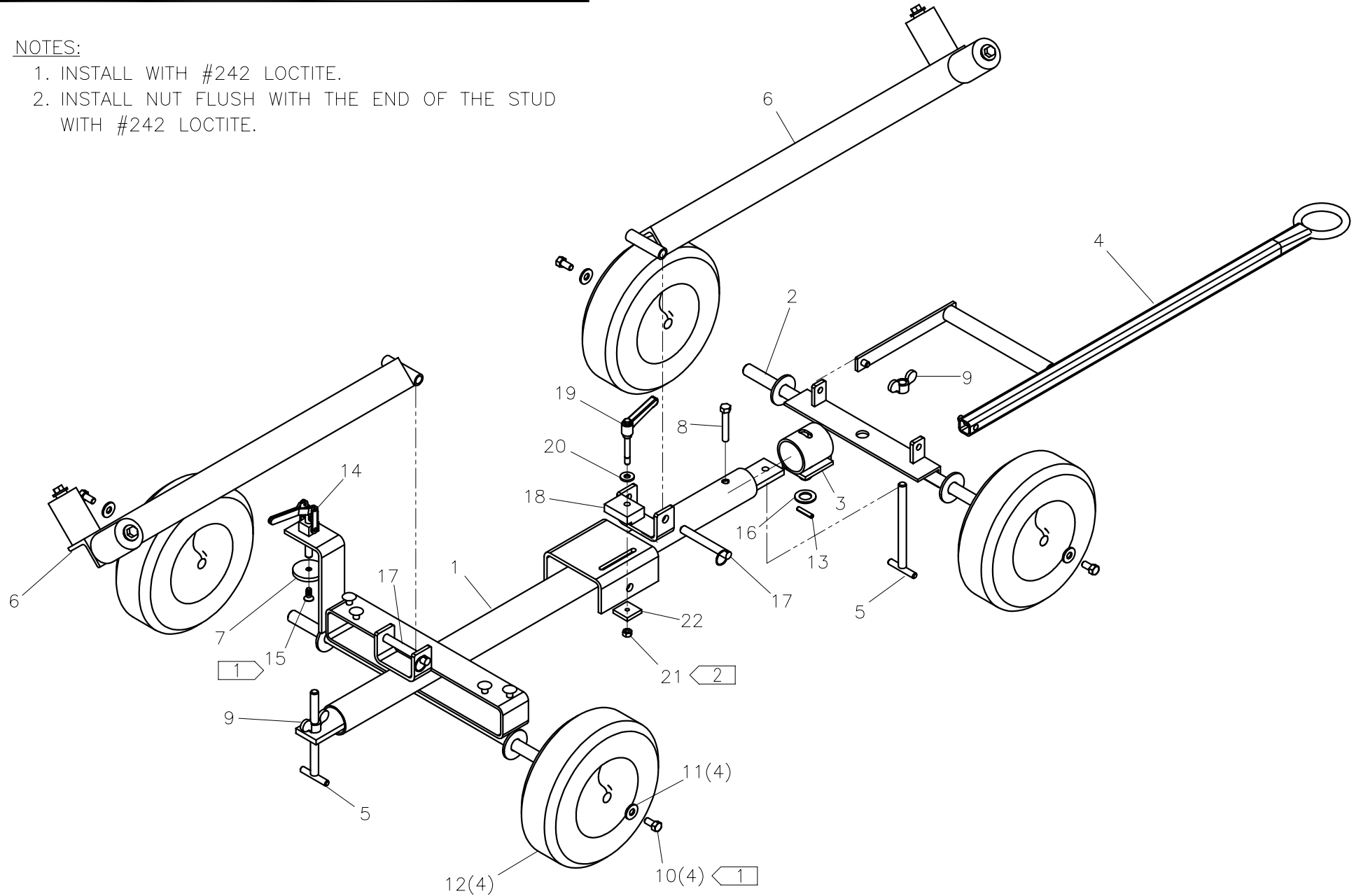
McElroy Manufacturing, Inc.
The leader by design.
Tulsa, Oklahoma U.S.A.

DRAWN: BWW	CHECK: TMT	APPRV'D: JRP	DATE: 7/27/00	DWG No: 434000	SHT No: 1	REV No: A	PART No: 434001
PitBull® No. 14 CART ASSEMBLY							CAD No: 434001

NOTE: THIS DRAWING AND THE INFORMATION CONTAINED THEREIN IS THE CONFIDENTIAL AND PROPRIETARY PROPERTY OF McElroy Manufacturing, Inc. THE DRAWING IS NOT TO BE REPRODUCED IN ANY MANNER, SUBMITTED OUTSIDE PARTIES FOR EXAMINATION, OR USED DIRECTLY OR INDIRECTLY FOR THE PURPOSES OTHER THAN THOSE FOR WHICH IT WAS FURNISHED WITHOUT WRITTEN PERMISSION OF McElroy Manufacturing, Inc.

NOTES:

1. INSTALL WITH #242 LOCTITE.
2. INSTALL NUT FLUSH WITH THE END OF THE STUD WITH #242 LOCTITE.



PitBull® No. 14 CART ASSEMBLY

PARTS LIST

ITEM	PART NO.	QTY	DESCRIPTION
	434001		Assembly
1	434101	1	PitBull® No. 14 CART FRAME WELDMENT
2	404501	1	FRONT AXLE WELDMENT
3	404701	1	FIFTH WHEEL WELDMENT
4	413901	1	TOW HANDLE WELDMENT
5	404901	2	OUTRIGGER ELEVATING STUD
6	405301	2	OUTRIGGER ASSEMBLY
7	405201	1	BRAKE PAD
8	MAB00076	1	3/8-16 NC x 2-1/4 LG HHCS
9	MBH00001	2	1/2-13NC TYPE 'B' WING NUT
10	MAB00063	4	3/8-16NC x 3/4 LG HHCS
11	MBF00007	4	3/8 TYPE 'A' WIDE FLAT WASHER
12	MIA00001	4	3/4 BRASS BUSHING BORE WHEEL ASSEMBLY
13	MCG00010	1	1/4 DIA. x 1-1/4 LG ROLL PIN
14	MJA00003	1	TOGGLE CLAMP
15	MAD00058	1	5/16-18NC x 3/4 LG. FHCS
16	MBG00004	1	3/4 TYPE 'AN' FLAT WASHER
17	MCE00015	2	1/2 X 3.50 LG GRIP DETENT PIN
18	434107	1	PitBull® No. 14 CLAMPING BLOCK
19	MJJ00019	1	CLAMP HANDLE
20	MBF00006	1	5/16 TYPE 'A' WIDE FLAT WASHER
21	MBA00006	1	5/16-18NC FINISH HEX NUT
22	434106	1	PitBull® No. 14 SLIDING CLAMP BOTTOM

DRAWING REVISION HISTORY LISTING

PART NO: 434001
DESCRIPTION: PitBull® No. 14 CART ASSEMBLY

<u>APPR.</u>	<u>REV</u>	<u>DATE</u>	<u>BY</u>	<u>DESCRIPTION OF REVISION</u>
SWB	A	06/01/05	BWW	CONSOLIDATED TO 1 SHEET AND CREATED ISOMETRIC VIEW FOR CLARITY.