



McElroy Manufacturing, Inc.
The leader by design.
Tulsa, Oklahoma U.S.A.

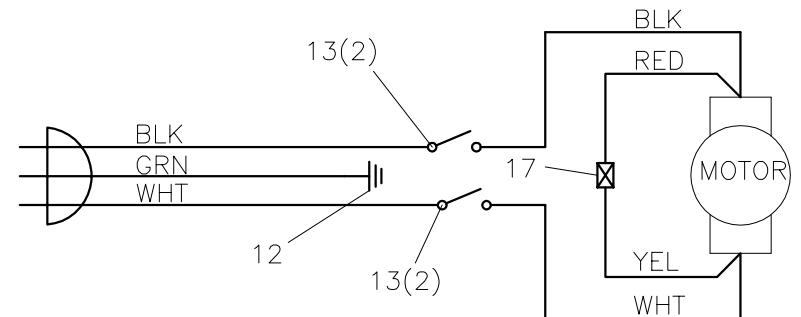
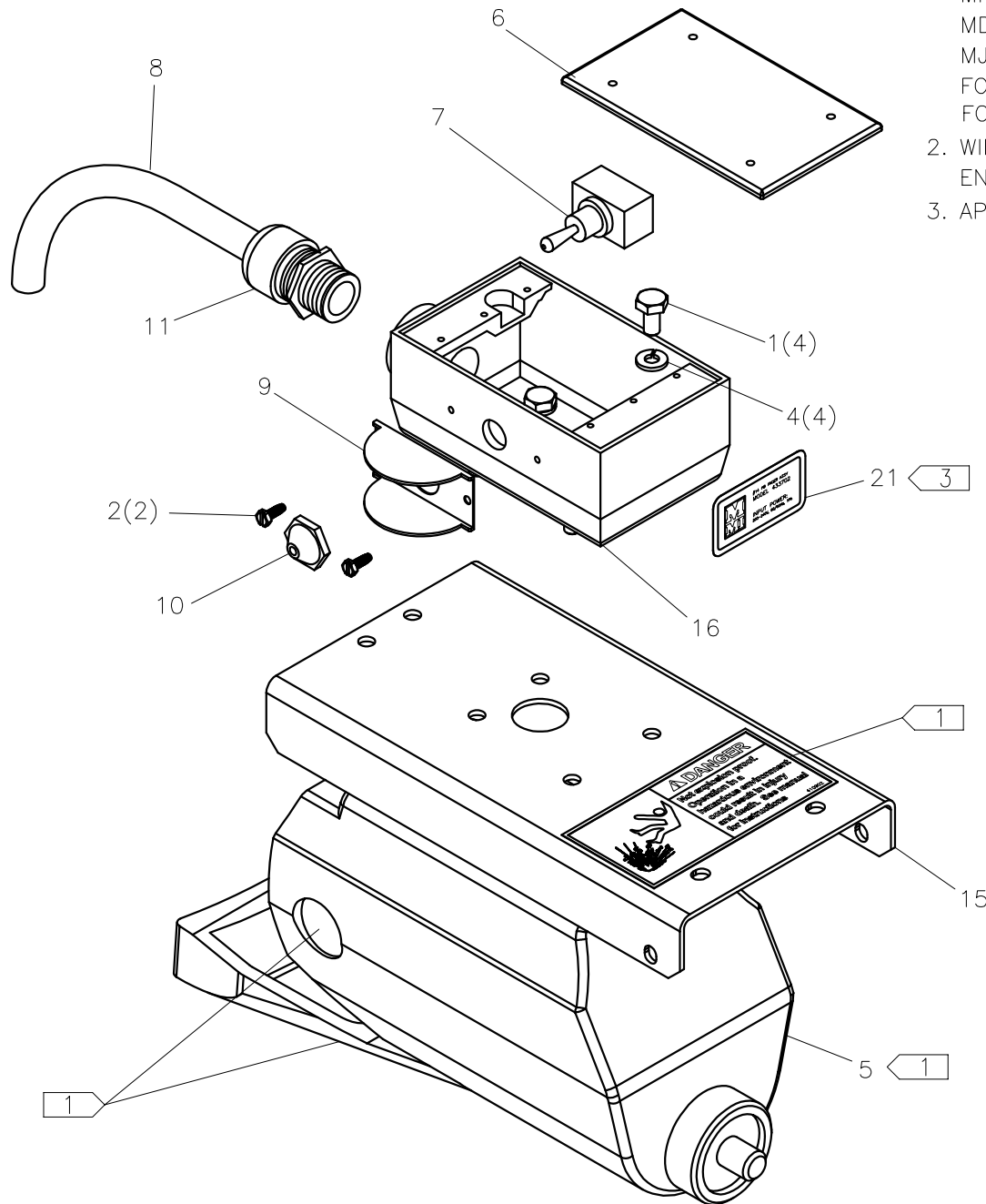
DRAWN: BWW	CHECK: TLW	APPRV'D: SWB	DATE: 10/27/00	SHT No: 2	REV No: G	PART No: A424102
------------	------------	--------------	----------------	-----------	-----------	------------------

#14 BM FACER MOTOR ASSEMBLY 200-240V, 50/60Hz 1Ph

NOTE: THIS DRAWING AND THE INFORMATION CONTAINED THEREIN IS THE CONFIDENTIAL AND PROPRIETARY PROPERTY OF McElroy Manufacturing, Inc. THE DRAWING IS NOT TO BE REPRODUCED IN ANY MANNER, SUBMITTED OUTSIDE PARTIES FOR EXAMINATION, OR USED DIRECTLY OR INDIRECTLY FOR THE PURPOSES OTHER THAN THOSE FOR WHICH IT WAS FURNISHED WITHOUT WRITTEN PERMISSION OF McElroy Manufacturing, Inc.

NOTES:

1. THE FOLLOWING SERVICE PARTS ARE AVAILABLE FOR THE MOTOR:
MKH00113 (2) CARBON BRUSH
MDR00068 (2) BRUSH CAP
MJQ00060 (1) HANDLE
FOR REPLACEMENT MOTOR USE 436601
FOR REPLACEMENT LABEL USE 410902.
2. WIRE MOTOR FOR COUNTER-CLOCKWISE ROTATION FACING SHAFT END OF MOTOR.
3. APPLY ASSEMBLY PART NUMBER LABEL.



**#14 BM FACER MOTOR ASSEMBLY
200-240V, 50/60Hz, 1Ph**

Parts List

ITEM	PART NO.	QTY.	DESCRIPTION
	A424102		ASSEMBLY
1	MAB00002	4	1/4-20NC x 1/2 LG. HHCS
2	MAH00036	2	#6-32NC x 3/8 LG. HWH THREAD CUTTING SCREW
3			
4	MBE00005	4	1/4 REGULAR SPLIT LOCK WASHER
5	436601	1	240 VOLT FACER MOTOR MODIFICATION
6	MLA00012	1	COVER
7	MKE00004	1	SWITCH
8	MLE00031	1	#14/3 ELECTRICAL CABLE ASSEMBLY x 20FT
9	MLG00001	1	SWITCH GUARD
10	MLH00001	1	SWITCH BOOT
11	MLK00007	1	STRAIN RELIEF CONNECTOR
12	MLM00133	1	14-16 x #10 RING TERMINAL
13	MLM00001	4	14-16 x #8 RING TERMINAL
14			
15	417501	1	MOTOR COVER
16	407801	1	SWITCH BOX
17	MLM00003	1	14-16 BUTT SPLICE
18			
19			
20			
21	433703	1	PitBull® No. 14 240V FACER ASSEMBLY LABEL

DRAWING REVISION HISTORY LISTING

PART NO: A424102
DESCRIPTION: #14 BM FACER MOTOR ASSEMBLY 200-240V, 50/60Hz, 1Ph

<u>APPR.</u>	<u>REV</u>	<u>DATE</u>	<u>BY</u>	<u>DESCRIPTION OF REVISION</u>
SWB	A	4/12/01	RLE	ADDED NOTE #1.
SWB	B	12/20/01	KWB	ADDED NOTE #2 FOR WIRE MOTOR, MOVED FROM 433702 ASSEMBLY DRAWING.
BEA	C	01/10/02	BWW	ADDED RED AND YELLOW MOTOR WIRES AND ITEM 17 MLM00003 QTY 1 TO MATCH AS BUILT CONDITION.
TMT	D	11/20/02	RLE	REVISED MDB00013 TO MDB00012, MLM00003 FROM QTY. (1) TO QTY. (3), ADDED IE-FMC0010-010 QTY. (1), MAC00012 QTY. (2), MBC00002 QTY. (2) & 433703 QTY. (1). REVISED FROM 240V FACER MOTOR TO 120V FACER MOTOR WITH FACER CONTROLLER BOARD THAT CONDITIONS 240V SO THAT 120V MOTOR CAN RUN ON IT. 240V FACER MOTOR IS NO LONGER AVAILABLE, THIS CHANGE WAS PUT INTO EFFECT 10/30/02. REVISED MAB00002 FROM QTY. (6) TO QTY. (4), MBE00005 FROM QTY. (6) TO QTY. (4) & DELETED MBA00005 QTY. (2) THESE ITEMS ARE NOT NEEDED SINCE NO BRACKET IS ATTACHED (AS ON 120V).
PJB	E	12/13/02	BEA	ADDED ITEM #22, SIL-PAD, TO INSURE GOOD HEAT SINKING OF TRIAC.
PJB	F	2/14/03	BEA	SUBSTITUTE MOTOR MODIFICATION IN PLACE OF CIRCUIT BOARD FOR CONVERTING 120 VOLT MOTOR TO 240 VOLTS: DELETED ITEM #18(IE-FMC0010-010), FACER MOTOR CONTROLLER BOARD DELETED ITEM #19(MAC00012) 6-32 SCREWS (QTY 2). DELETED ITEM #20(MBC00002) 6-32 LOCKNUTS (QTY 2). DELETED ITEM #22(IE-P000056) SIL-PAD (QTY 1). CHANGED ITEM #5 FROM MDB00012 TO 436601. CHANGED QTY OF ITEM #17 FROM 3 TO 1. REVISED NOTE #1 TO CHANGE BRUSH PART NUMBER FROM MKH00018 TO MKH00113 AND TO SPECIFY #436601 AS THE REPLACEMENT MOTOR FOR ALL 240 VOLT FACER ASSEMBLIES. DELETED NOTE #3, "REMOVE MOTOR TAG..."
SWB	G	06/01/05	BWW	REMOVED ITEM 14 410902 WHICH IS NOW CALLED OUT ON 417501 TO ENSURE LABEL IS INCLUDED ON SERVICE PART. UPDATED NOTE 1 FOR ORDERING REPLACEMENT LABEL. CREATED ISOMETRIC VIEW FOR CLARITY.