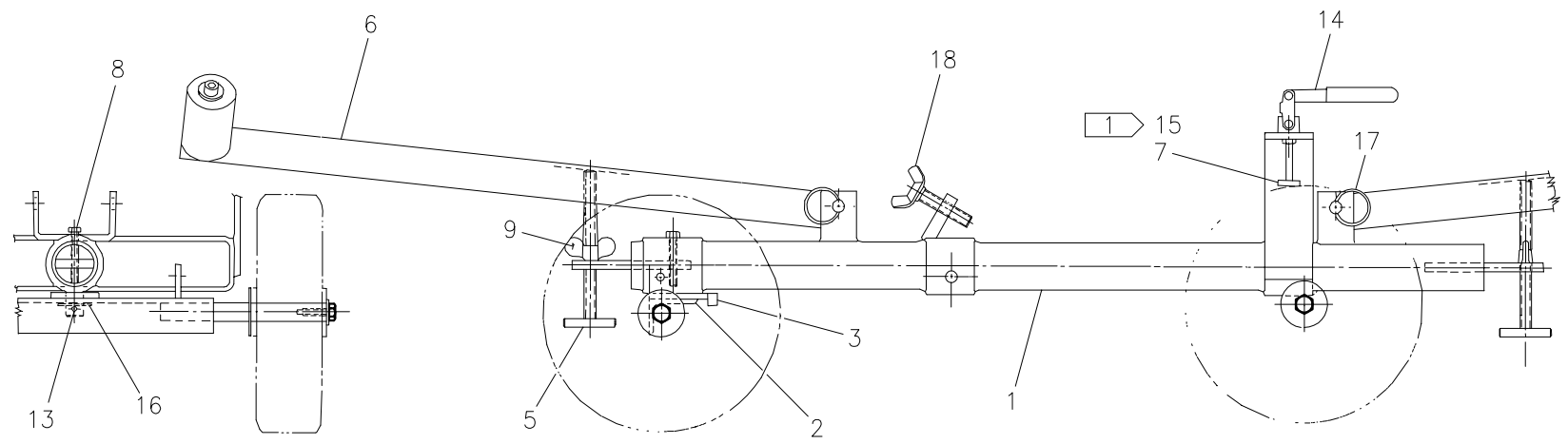
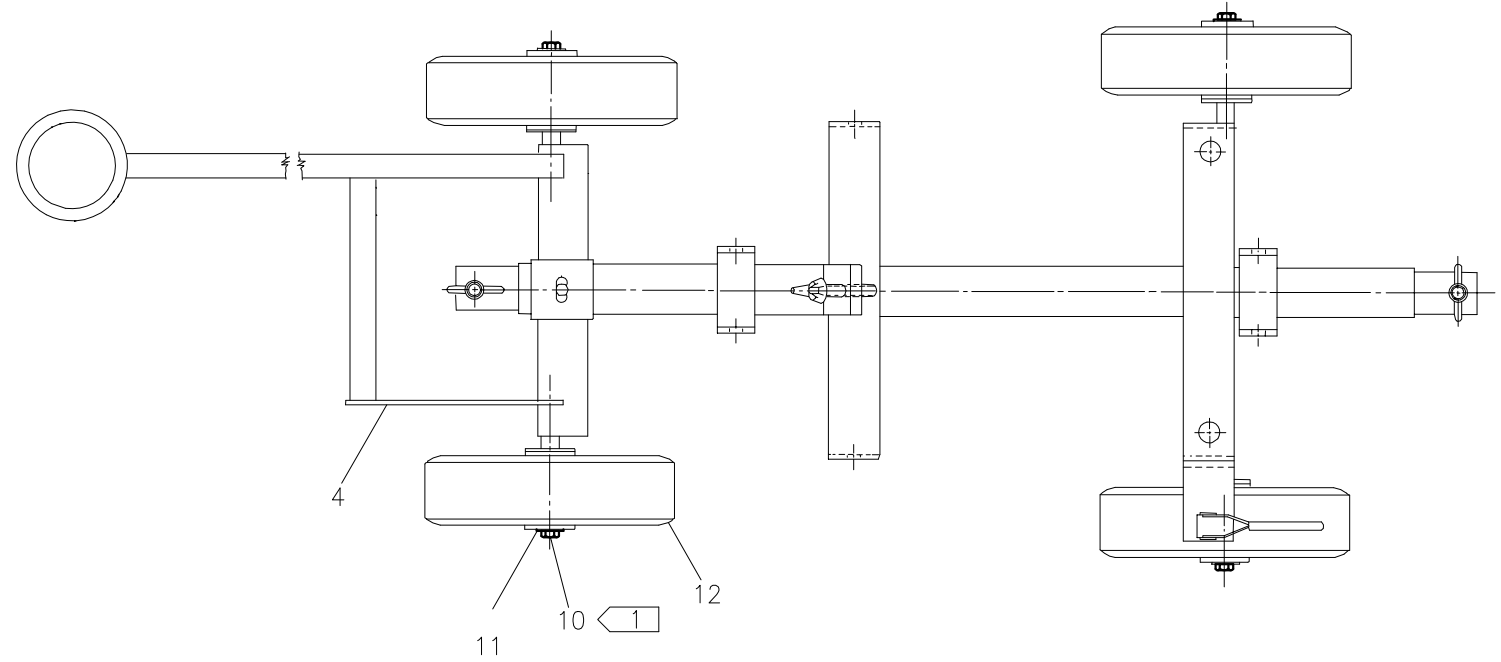




**McElroy Manufacturing, Inc.**  
The leader by design.  
Tulsa, Oklahoma U.S.A.

DRAWN: SWB	CHECK: BWP	APPRV'D: B	DATE: 5/16/95	DWG No: 423100	SHT No: 1	REV No: G	PART No: 423101
#14 FUSION UNIT CART ASSEMBLY							CAD No: 423101

NOTE: THIS DRAWING AND THE INFORMATION CONTAINED THEREIN IS THE CONFIDENTIAL AND PROPRIETARY PROPERTY OF McElroy Manufacturing, Inc. THE DRAWING IS NOT TO BE REPRODUCED IN ANY MANNER, SUBMITTED OUTSIDE PARTIES FOR EXAMINATION, OR USED DIRECTLY OR INDIRECTLY FOR THE PURPOSES OTHER THAN THOSE FOR WHICH IT WAS FURNISHED WITHOUT WRITTEN PERMISSION OF McElroy Manufacturing, Inc.



**#14 FUSION UNIT CART ASSEMBLY**PARTS LIST

ITEM	PART NO.	QTY	DESCRIPTION
	<b>423101</b>		<b>Assembly</b>
1	423501	1	Frame Weldment
2	404501	1	Front Axle Assembly
3	404701	1	Fifth Wheel Assembly
4	413901	1	Tow Handle
5	404901	2	Elevating Stud
6	405301	2	Outrigger Assembly
7	405201	1	Brake Pad
8	MAB00076	1	3/8-16 NC x 2-1/4" Lg. HHCS
9	MBH00001	2	1/2-13 NC Wing Nut
10	MAB00063	4	3/8-16 NC x 3/4" Lg. HHCS
11	MBF00007	4	3/8" x 1-1/8" OD Flat Washer PI
12	MIA00001	4	3/4" BB Bore Wheel Assembly
13	MCG00010	1	1/4" Dia. x 1-1/4" Lg. Roll Pin
14	MJA00003	1	Toggle Clamp
15	MAD00058	1	5/16-18 NC x 3/4" Lg. FHCS
16	MBG00004	1	3/4" Flat Washer
17	MCE00015	2	1/2 DIA. X 3.50 Grip Detent Pin
18	MAH00031	1	1/2-13 NC x 2-1/2" Lg. Wing Hd. Thumb Screw Cad PI

**NOTES:**

1. INSTALL WITH THREAD LOCKING COMPOUND

## DRAWING REVISION HISTORY LISTING

**PART NO:** 423101

**DESCRIPTION:** #14 FUSION UNIT CART ASSEMBLY

<u>APPR.</u>	<u>REV</u>	<u>DATE</u>	<u>BY</u>	<u>DESCRIPTION OF REVISION</u>
B	E	05/16/95	SWB	Scanned & reduced to 'A' size format. Created typed parts list.
TLW	F	01/19/98	RLE	ADDED NOTE 1, PER B. McNAIR.
TLW	G	07/19/00	PB	REVISED ITEM #10 MAH00007 3/8-16 N.C. SHCS TO MAB00063 3/8-16 N.C. HHCS TO MATCH AS BUILT CONDITION. REVISED NOTE 1, TO GENERIC CALL OUT FOR THREAD LOCKING COMPOUND.