

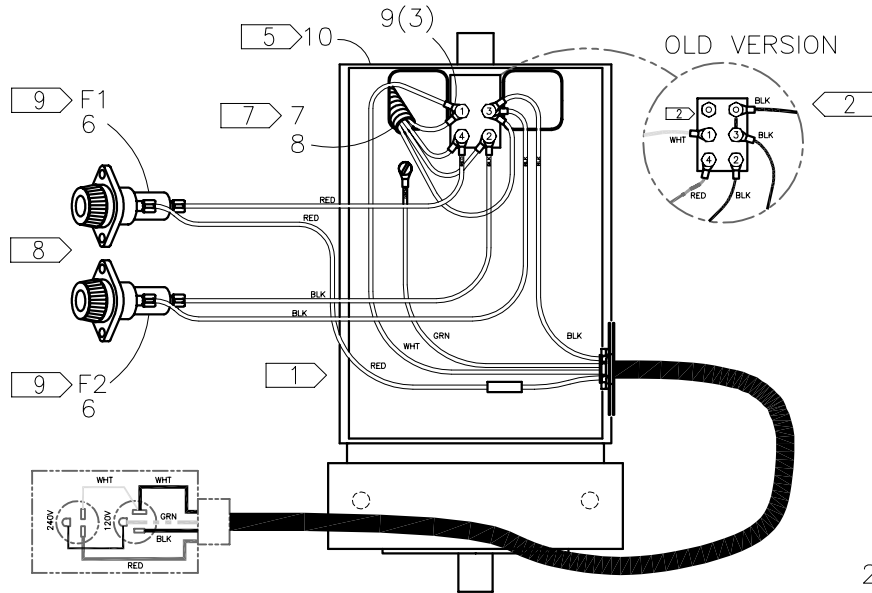


NOTE: THIS DRAWING AND THE INFORMATION CONTAINED THEREIN IS THE CONFIDENTIAL AND PROPRIETARY PROPERTY OF McElroy Manufacturing, Inc. THE DRAWING IS NOT TO BE REPRODUCED IN ANY MANNER, SUBMITTED OUTSIDE PARTIES FOR EXAMINATION, OR USED DIRECTLY OR INDIRECTLY FOR THE PURPOSES OTHER THAN THOSE FOR WHICH IT WAS FURNISHED WITHOUT WRITTEN PERMISSION OF McElroy Manufacturing, Inc.

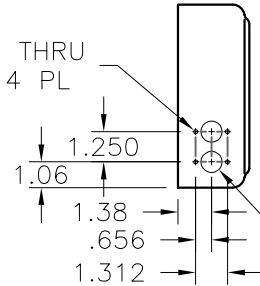
NOTES:

1. SECURE WIRES WITH WIRE TIES TO LIMIT VIBRATION.
2. USE EXISTING STRAPS FOR JUMPERING WHERE POSSIBLE.
3. LOUVER PANELS & ATTACHMENT SCREWS FOR BOTH SIDES ARE INCLUDED WITH ITEM 10, GENERATOR, & INSTALLED AT FINAL MACHINE ASSEMBLY.
4. MODIFY COVER PER DETAIL.
5. 120/240V 60Hz GENERATOR
6. FOR REPLACEMENT COVER SEE T1214002.
7. COVER WIRES WITH TUBING AS FAR AS POSSIBLE INSIDE THE GENERATOR FRAME. SECURE WITH CABLE TIE.
8. INSERT FUSES F1,F2 IN HOLDERS ITEM 6 WITH RED INDICATOR TOWARD CLEAR CAP.
9. SOLDER CONNECTIONS AND COVER WITH SHRINK SLEEVING.

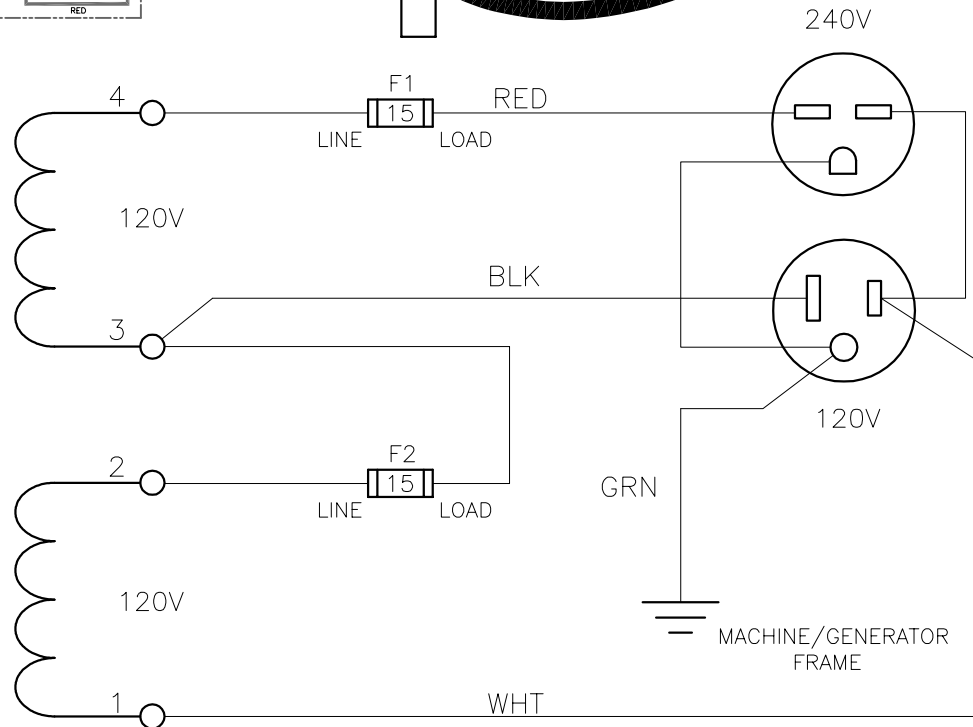
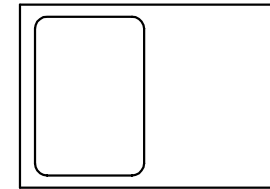
VIEW WITH COVER REMOVED



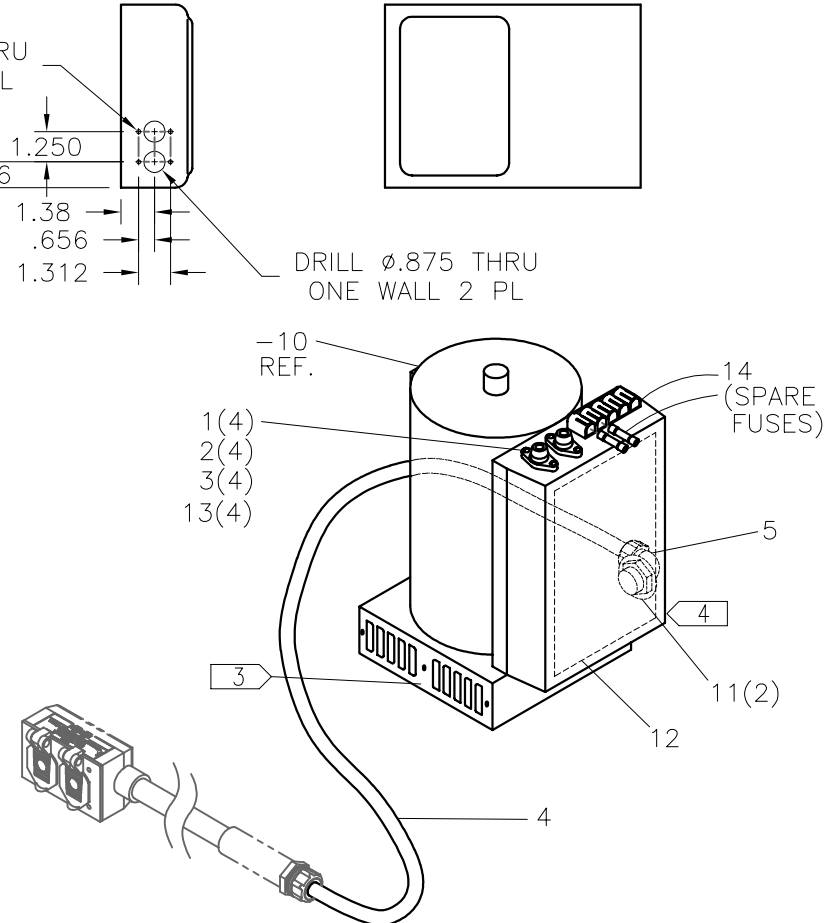
DRILL ϕ .177 THRU
ONE WALL 4 PL



DRILL ϕ .875 THRU
ONE WALL 2 PL



COVER DETAIL



GENERATOR W/WIRING ASSEMBLYParts List

ITEM	PART NO.	QTY.	DESCRIPTION
	T1201701		ASSEMBLY
F1,F2	MLQ00068	4	15AMP INDICATING FUSE (+2 SPARES)
1	MAH00034	4	#8-32NC x 1/2 LG. RD HD SLOTTED MACHINE SCR
2	MBE00003	4	#8 REGULAR SPLIT LOCK WASHER
3	MBF00003	4	#8 TYPE 'A' WIDE FLAT WASHER
4	T1201703	1	GENERATOR CORD
5	MLK00040	1	3/4" x 90° STRAIN RELIEF CONNECTOR
6	MLR00032	2	PANEL MOUNT FUSE HOLDER
7	MLW00011	.13 FT	1/2 DIA SPLIT CORRUGATED TUBING
8	MLN00113	1	CABLE TIE
9	MLM00133	3	RING TERMINAL
10	MDC00027	1	5KVA 60/120/240v, 60Hz AC GENERATOR
11	MLJ00082	2	1-1/4 x 3/4 REDUCER WASHER
12	MJQ00381	.03	DAMPENING SHEET 6" x 9"
13	MBA00003	4	#8-32NC HEX NUT
14	MLR00033	1	SPARE FUSE HOLDER

DRAWING REVISION HISTORY LISTING

PART NO: T1201701
DESCRIPTION: GENERATOR W/WIRING ASSEMBLY

<u>APPR.</u>	<u>REV</u>	<u>DATE</u>	<u>BY</u>	<u>DESCRIPTION OF REVISION</u>
RAD	A	09/01/00	TLW	ADDED ITEM #22 (T1201702) VOLTAGE LABEL.
RAD	---	9/22/00	PB	REVISED VIEW ON DRAWING OF ITEM 16 - DUPLEX TERMINAL TO REFLECT CORRECT POSITION IN RELATION TO WIRING.
RAD	B	10/16/00	MLM	ADDED ITEMS 23-29 (MOUNTING HARDWARE FOR GENERATOR)
dwp	C	12/18/00	MLM	REMOVED ITEMS 23-29 (MOUNTING HARDWARE FOR GENERATOR) – NOW CALLED OUT ON POWER ASSY PER MANUFACTURING REQUEST.
DWP	D	01/08/01	BWW	REVISED TO ADD NOTE 2 FOR MODIFICATION OF ITEM 6 AND ADDED MODIFICATION DIMENSIONS AND HOLE CALLOUT TO SHT. 1C.
RAD	E	02/14/01	BWW	REMOVED ITEMS: MAB00002 QTY 1, MBG00057 QTY 1, MLA00011 QTY 1, MLB00029 QTY 1, MLI00028 QTY 30", MLJ00080 QTY 1, MLK00077 QTY 1, MLM00172 QTY 1, MLB00028 QTY 1, MLL00052 QTY .3FT., T1201702 QTY 1, REMOVED NOTE 3 FROM SHT. 1B, RENUMBERED NOTES AND PARTS LIST AND CHANGED MLE00008 QTY 7' TO 9'8". THESE PARTS WERE MOVED TO T1200202 PER RESTRUCTURING.
RAD	F	01/16/02	BEA	REMOVED ITEMS: MLL00002 QTY 2 FT, MLL00058 QTY 1 FT. CHANGED QTY OF ITEM 9, MLM00133, FROM 6 TO 3. ADDED ITEM 11, MLJ00082, QTY 2. CHANGED ITEM 1 FROM MAH00001 TO MAE00008.
DWP	G	3/20/02	ALK	REVISED TO ADD ITEM-12 (MJQ00381) TO DAMPEN VIBRATION.
SWB	--	5/8/02	RLE	REVISED ITEM #4 MLE00008 QTY. (9'-8") TO T1201703 QTY. (1). T1201703 IS NOW PURCHASED CUT TO LENGTH FOR T1201701 GENERATOR WIRING ASSEMBLY.
SWB	H	04/22/03	BWW	ADDED NOTE 2 FOR GENERATOR LOUVER PANEL ATTACHMENT FOR CLARITY.
SWB	J	7/30/03	ALK	REVISED DESCRIPTION FROM GENERATOR WIRING ASSEMBLY TO GENERATOR W/WIRING ASSEMBLY TO ELIMINATE CONFUSION.
SWB	K	1/10/05	MLM	REVISED SHEET-1C TO ADD NOTE FOR REPLACEMENT PART.
SWB	L	06/17/05	BWW	REVISED TO CONSOLIDATE ALL TO 1 SHT. FOR CLARITY.
JRP	M	9/14/06	BEA	ADDED ITEMS 7 & 8 AND NOTE 7 TO PROTECT WIRING.
SWB	N	2/13/07	MAC	REVISED TO REPLACE CIRCUIT BREAKER MOD. ITEM 6 (T1202001) WITH (2) FUSE HOLDERS (MLR00032) & FUSES F1-F2 WITH 2 SPARES (MLQ00068). REVISED HARDWARE ITEMS 1-3 FROM #6 HARDWARE TO #8 HARDWARE & ADDED ITEM 13 (MBA00003) NUT. ADDED ITEM 14 (MLR00033) SPARE FUSE HOLDER.