



McElroy Manufacturing, Inc.

The leader by design.

Tulsa, Oklahoma U.S.A.

DRAWN: BWW

CHECK: BLM

APPRVD: SWB

DATE: 07/29/03

SHT No: 1

REV No: G

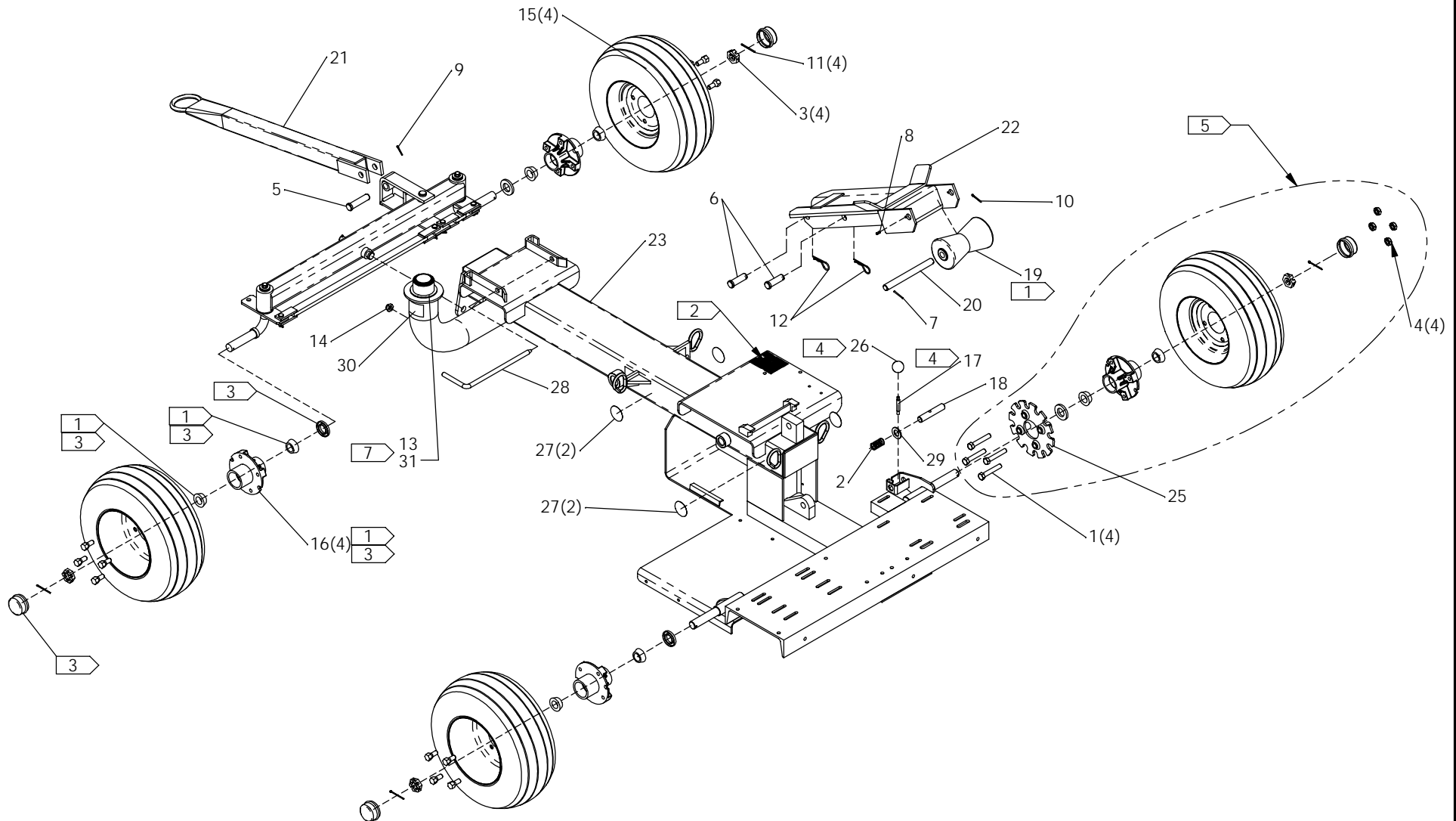
PART No: 1869501

412/# 618 GAS/ELECTRIC ROLLING CHASSIS ASSEMBLY

NOTE: THIS DRAWING AND THE INFORMATION CONTAINED THEREIN IS THE CONFIDENTIAL AND PROPRIETARY PROPERTY OF McElroy Manufacturing, Inc. THE DRAWING IS NOT TO BE REPRODUCED IN ANY MANNER, SUBMITTED TO OUTSIDE PARTIES FOR EXAMINATION, OR USED DIRECTLY OR INDIRECTLY FOR THE PURPOSES OTHER THAN THOSE FOR WHICH IT WAS FURNISHED WITHOUT WRITTEN PERMISSION OF McElroy Manufacturing, Inc.

NOTES:

1. PACK WHEEL HUB AND BEARINGS AND FILL PIPE LIFT ROLLER WITH EP GREASE.
2. ATTACH NAMEPLATE AT FINAL ASSEMBLY USING (4) DRIVE SCREWS.
3. ITEM-16 MIB00001 INCLUDES : (1) MDL00120 SEAL, (2) MDM00189 TAPERED ROLLER BEARING CONES, (1) MIB00011 GREASE CAP, AND (4) LUG BOLTS. THE PART NO.'S SHOWN MAY BE ORDERED SEPARATELY.
4. INSTALL WITH MEDIUM STRENGTH THREAD LOCKER.
5. WHEN ORDERING REPLACEMENT PARTS FOR BRAKE WHEEL ASSEMBLY, DISCARD LUG BOLTS SUPPLIED AND ORDER (4) ITEM-1 MAB00160 AND (4) ITEM-4 MBH00061.
6. ITEMS SHOWN IN PARENTHESIS REFLECT QUANTITIES IN A LOCAL GROUP AND MAY NOT INDICATE TOTAL ASSEMBLY QUANTITIES.
7. REMOVE PLASTIC BEAD CHAIN AND REPLACE WITH STEEL BEAD CHAIN ITEM 31



#412/#618 GAS/ELECTRIC ROLLING CHASSIS ASSEMBLY

Parts List

ITEM	PART NO.	QTY.	DESCRIPTION
	1869501		ASSEMBLY
1	MAB00165	4	1/2-20NF X 3 LG HHCS FULL THREAD
2	MJE00028	1	COMPRESSION SPRING
3	MBD00041	4	1-14UNS AXLE NUT
4	MBH00061	4	1/2-20NC LUG NUT
5	MCF00004	1	3/4" DIA. X 2 27/32 GRIP CLEVIS PIN
6	MCF00016	2	3/4" DIA. X 2 11/32 GRIP CLEVIS PIN
7	MCG00024	1	1/8" DIA. X 1 1/2 LG ROLL PIN
8	MCG00028	1	1/4" DIA. X 1/2 LG ROLL PIN
9	MCH00001	1	1/8" DIA. X 1 LG COTTER PIN
10	MCH00004	1	1/8" DIA. X 1 1/4 LG COTTER PIN
11	MCH00005	4	1/8" DIA. X 2 LG COTTER PIN
12	MCH00021	2	3/4" DIA. X 2 11/16 LG HAIR PIN
13	MFK00004	1	FILLER CAP
14	MFJ00013	1	OIL EYE LENSE & O-RING
15	MIA00005	4	WHEEL & TIRE ASSY
16	MIB00001	4	HUB W/ BEARINGS, SEAL, CAP & (4) LUG BOLTS
17	MJJ00028	1	HANDLE SHAFT
18	1871601	1	BRAKE PLUNGER
19	802105	1	PIPE LIFT ROLLER
20	812802	1	PIPE LIFT ROLLER SHAFT
21	1209402	1	TOW BAR
22	1855401	1	PIPE LIFT ARM WELDMENT
23	1871101	1	CHASSIS WELDMENT
24	1869601	1	#412/#618FRONT AXLE ASSEMBLY
25	1871701	1	BRAKEPLATE WELDMENT
26	MJJ00029	1	RED BALL KNOB
27	MJQ00379	4	LIFT POINT LABEL
28	T1203201	1	CARRIAGE LOCK BAR
29	MBG00004	1	3/4 TYPE 'AN' FLAT WASHER
30	8163106	1	HYDRAULIC OIL SPECIFICATION LABEL
31	MJQ00411	4IN	3/16" STEEL BEAD CHAIN

DRAWING REVISION HISTORY LISTING

PART NO: 1869501
DESCRIPTION: #412/#618 GAS/ELECTRIC ROLLING CHASSIS ASSEMBLY

<u>APPR.</u>	<u>REV</u>	<u>DATE</u>	<u>BY</u>	<u>DESCRIPTION OF REVISION</u>
BLM	A	09/23/03	BWW	REVISED TO ADD ITEM 26 T5027401 QTY 1 AND ITEM 27 MJQ00379 QTY 4. UPDATED CHASSIS WELDMENT TO CURRENT REVISION. CHANGES MADE FOR IMPROVED SAFETY.
BLM	B	9/30/03	ALK	REVISED TO DELETE ITEM #26 T5027401. LABEL MATERIAL IS TOO STIFF, WILL NOT CURVE AROUND FILL SPOUT.
SWB	C	06/09/04	MLM	REVISED TO ADD ITEM-28 (T1203201) TO BE CONSISTANT WITH OTHER PRODUCTS.
BLM	D	10/26/04	BWW	REVISED TO CHANGE ITEM 2 FROM MBB00011 TO MJE00028, ITEM 17 FROM MJJ00024 TO MJJ00028, ITEM 18 FROM MJN00005 TO 1871601 AND ITEM 25 FROM 1871401 TO 1871701. ADDED ITEM 26 MJJ00029 QTY 1 AND ITEM 29 MBG00004 QTY 1. REMOVED NOTE 4 & RENUMBERED NOTE 5 TO NOTE 4. CHANGES MADE FOR NEW BRAKE DESIGN. ADDED ITEM 30 8163106 QTY 1.
SWB	E	06/06/05	BWW	CREATED EXPLODED ISOMETRIC VIEW, MOVED NOTES TO DRAWING AND ADDED NOTE 6 FOR CLARITY. REVISED TO CHANGED ITEM 1 FROM MAB00160 TO MAB00163 TO ENSURE THAT THE BRAKEPLATE WELDMENT IS CAPTURED PROPERLY.
SWB	F	11/15/05	BWW	REVISED ITEM 1 MAB00163 TO MAB00165 TO ENSURE PROPER THREAD ENGAGEMENT WITH CURRENT WHEEL DESIGN.
BLM	G	09/26/06	ARB	ADDED ITEM 31 MJQ00411 AND NOTE '7' TO REPLACE PLASTIC BEAD CHAIN INCLUDED WITH ITEM 13 'FILLER CAP' TO INCREASE DURABILITY