

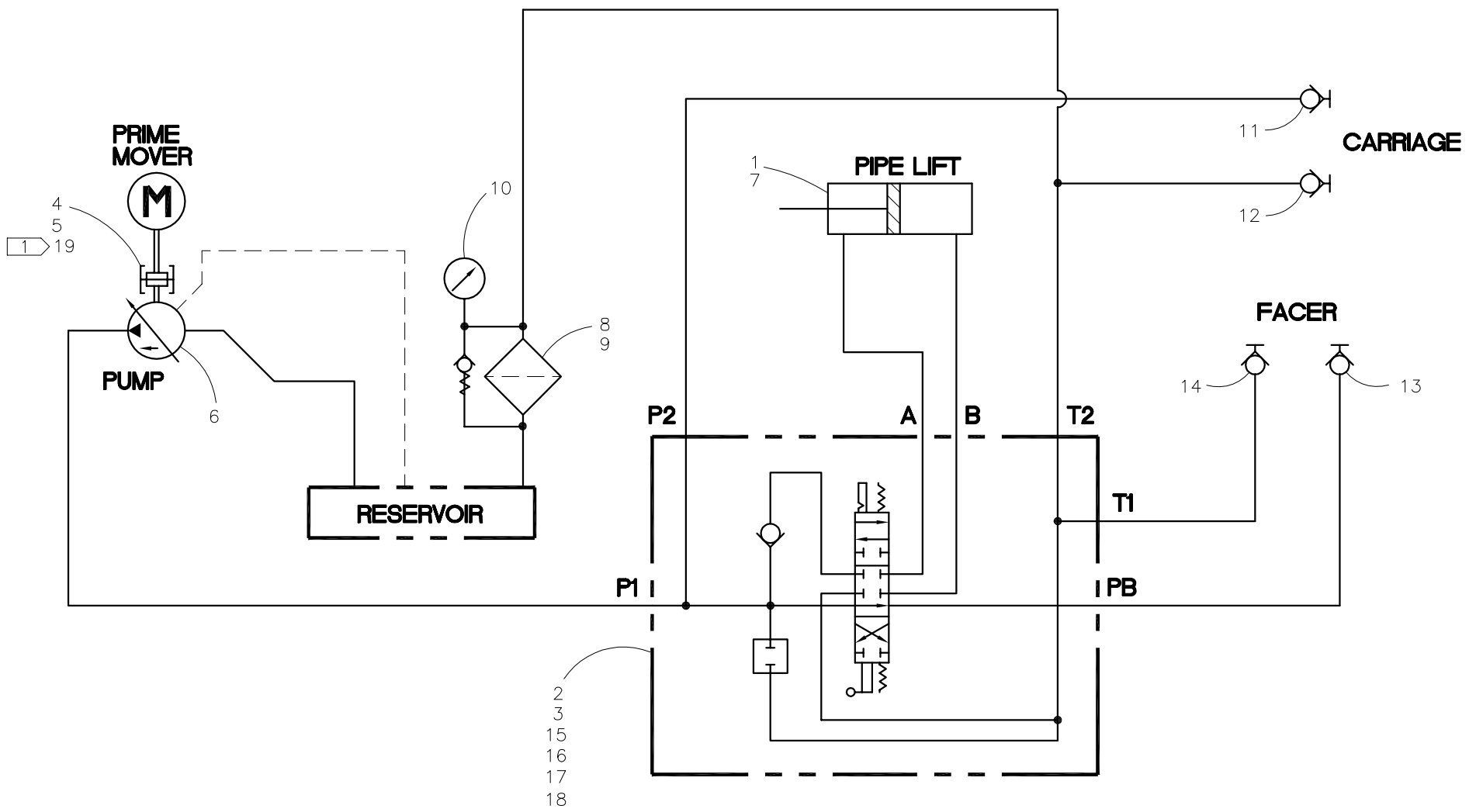


McElroy Manufacturing, Inc.
 The leader by design.
 Tulsa, Oklahoma U.S.A.

DRAWN: BWW	CHECK: BLM	APPRV'D: SWB	DATE: 02/17/03	DWG No: 1869300	SHT No: 1	REV No: C	PART No: 1869301
#412/#618 HYDRAULIC SCHEMATIC							CAD No: 1869301

NOTE: THIS DRAWING AND THE INFORMATION CONTAINED THEREIN IS THE CONFIDENTIAL AND PROPRIETARY PROPERTY OF McElroy Manufacturing, Inc. THE DRAWING IS NOT TO BE REPRODUCED IN ANY MANNER, SUBMITTED TO OUTSIDE PARTIES FOR EXAMINATION, OR USED DIRECTLY OR INDIRECTLY FOR THE PURPOSES OTHER THAN THOSE FOR WHICH IT WAS FURNISHED WITHOUT WRITTEN PERMISSION OF McElroy Manufacturing, Inc.

NOTES:
 1. THIS ITEM IS A SUB-ASSEMBLY ON A SEPARATE DRAWING.



#412/618 HYDRAULIC SCHEMATICParts List

ITEM	PART NO.	QTY.	DESCRIPTION
	1869301		ASSEMBLY
1	1237301	1	FEMALE ROD EYE
2	MEF00079	1	DIRECTIONAL VALVE LESS HANDLE
3	MEF00077	1	VALVE HANDLE LEVER
4	MAB00064	4	3/8-16NC X 1" LG HHCS
5	MBE00007	4	3/8" REGULAR SPLIT LOCK WASHER
6	MEA00026	1	PISTON PUMP
7	MEB00128	1	3-1/24" B X 3" S X 1" R HYD CYLINDER
8	MED00056	1	FILTER HEAD
9	MED00051	1	FILTER ELEMENT
10	MEE00021	1	PRESSURE GAUGE
11	MFH00044	1	3/8 FSAE QUICK DISCONNECT NIPPLE
12	MFH00043	1	3/8 FSAE QUICK DISCONNECT COUPLER
13	MFH00046	1	1/2 FSAE QUICK DISCONNECT NIPPLE
14	MFH00045	1	1/2 FSAE QUICK DISCONNECT COUPLER
15	MAB00040	2	5/16-18NC X 2 3/4 LG HHCS
16	MBE00006	2	5/16 REGULAR SPLIT LOCK WASHER
17	MBA00006	2	5/16-18NC FINISHED LOCK NUT
18	816305	1	PIPE LIFT LABEL
19	1813402	1	#412/#618 BEARING HOUSING ASSEMBLY

DRAWING REVISION HISTORY LISTING

PART NO: 1869301
DESCRIPTION: #412/#618 HYDRAULIC SCHEMATIC

<u>APPR.</u>	<u>REV</u>	<u>DATE</u>	<u>BY</u>	<u>DESCRIPTION OF REVISION</u>
SWB	A	09/08/03	BWW	REVISED ITEM 7 FROM MEB00104 TO MEB00128 TO REFLECT NEW CYLINDER.
BLM	B	11/05/03	BWW	REVISED ITEM 6 FROM MEA00062 TO MEA00026 FOR BETTER PUMP.
SWB	C	11/18/05	JAB	ADDED NOTE 1 TO REFLECT CURRENT STANDARD.