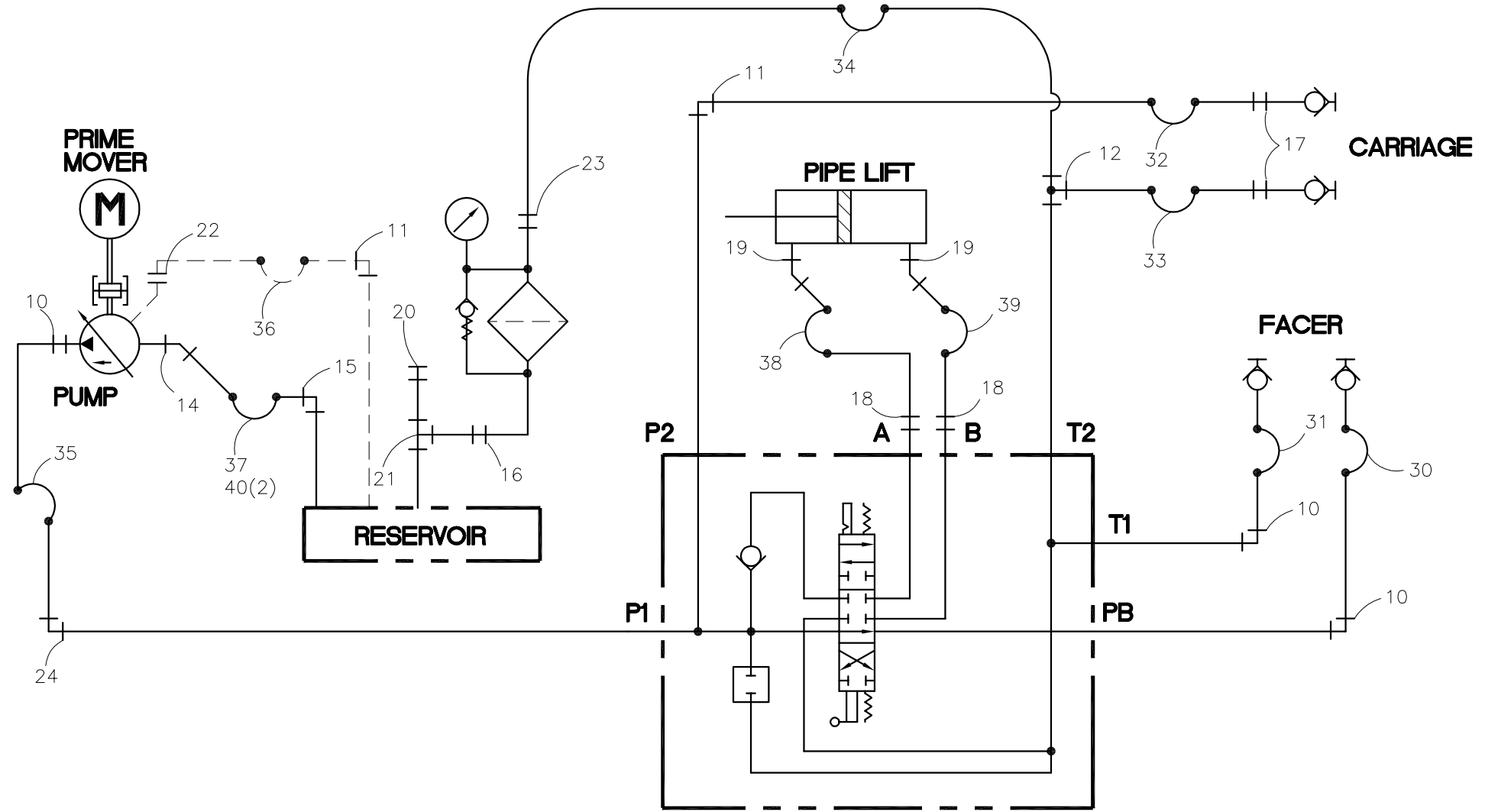




NOTE: THIS DRAWING AND THE INFORMATION CONTAINED THEREIN IS THE CONFIDENTIAL AND PROPRIETARY PROPERTY OF McElroy Manufacturing, Inc. THE DRAWING IS NOT TO BE REPRODUCED IN ANY MANNER, SUBMITTED TO OUTSIDE PARTIES FOR EXAMINATION, OR USED DIRECTLY OR INDIRECTLY FOR THE PURPOSES OTHER THAN THOSE FOR WHICH IT WAS FURNISHED WITHOUT WRITTEN PERMISSION OF McElroy Manufacturing, Inc.

- NOTES:
 1. FOR ITEMS 10 THRU 29 ORDER KIT NUMBER A1869201.
 2. FOR ITEMS 30 AND LARGER ORDER KIT NUMBER A1869203.



#412/#618 ELECTRIC PLUMBING SCHEMATICParts List

ITEM	PART NO.	QTY.	DESCRIPTION
	1869202		ASSEMBLY
1	MFL00041	5ft.	1 1/2 HOSE SLEEVE
	A1869201		#412/#618 FITTING KIT
10	MFQ00012	3	8MSL / 8MSAE ELBOW
11	MFQ00001	2	6MSL / 8MSAE ELBOW
12	MFQ00055	1	8MSL / 8MSL / 8MSAE RUN TEE
13			
14	MFC00128	1	12MSAE / 16 HOSE BARB ELBOW 45°
15	MFC00129	1	16MSAE / 16 HOSE BARB ELBOW
16	MFC00119	1	12MSAE / 12MSAE ADAPTER
17	MFQ00047	2	6MSL / 6MSAE BULKHEAD ADAPTER
18	MFQ00011	2	6MSL / 6MSAE ADAPTER
19	MFQ00059	2	8MPT / 8MSL ELBOW 45°
20	MFC00085	1	12MSAE PLUG
21	MFC00124	1	12MSAE / 12FSAE / 12FSAE TEE
22	MFQ00061	1	6MSL / 8MSAE ADAPTER
23	MFQ00056	1	8MSL / 12MSAE ADAPTER
24	MFQ00032	1	8MSAE/8MSL ELBOW 45°
	A1869203		#412/#618 ELECTRIC HOSE KIT
30	SLCDEJE072	1	HOSE ASSEMBLY OAL 72"
31	SLCDEJE076	1	HOSE ASSEMBLY OAL 76"
32	SLBBDBD015	1	HOSE ASSEMBLY OAL 15"
33	SLBBDBE012	1	HOSE ASSEMBLY OAL 12"
34	SLCBEDE028	1	HOSE ASSEMBLY OAL 28"
35	SLCCEKE026	1	HOSE ASSEMBLY OAL 26"
36	SLBBDDD016	1	HOSE ASSEMBLY OAL 16"
37	HNZZZZ036	1	HOSE ASSEMBLY OAL 36"
38	SLBBEDD017	1	HOSE ASSEMBLY OAL 17"
39	SLBBECD015	1	HOSE ASSEMBLY OAL 15"
40	MFD00017	2	HOSE CLAMP

DRAWING REVISION HISTORY LISTING

PART NO: 1869202

DESCRIPTION: #412/#618 ELECTRIC PLUMBING SCHEMATIC

<u>APPR.</u>	<u>REV</u>	<u>DATE</u>	<u>BY</u>	<u>DESCRIPTION OF REVISION</u>
BLM	A	3/4/04	ALK	REVISED ITEM 14 FROM MFO00064 TO MFC00128, ITEM 15 FROM MFO00058 TO MFC00129, AND ITEM 37 FROM SLNBIBI034 TO HNZZZ036. ADDED ITEM 40 MFD00017.
BWJ	B	12/21/04	BWW	CORRECTED ITEM 23 MFO00056 TO INDICATE CORRECT "12MSAE". INCORRECT UPON CREATION.
SWB	C	11/18/05	JAB	ADDED NOTES 1 & 2 TO FACE OF DRAWING. REVISED TO MATCH DUPLICATE PARTS LIST OF FITTING KIT ON 1869201 DRAWING.