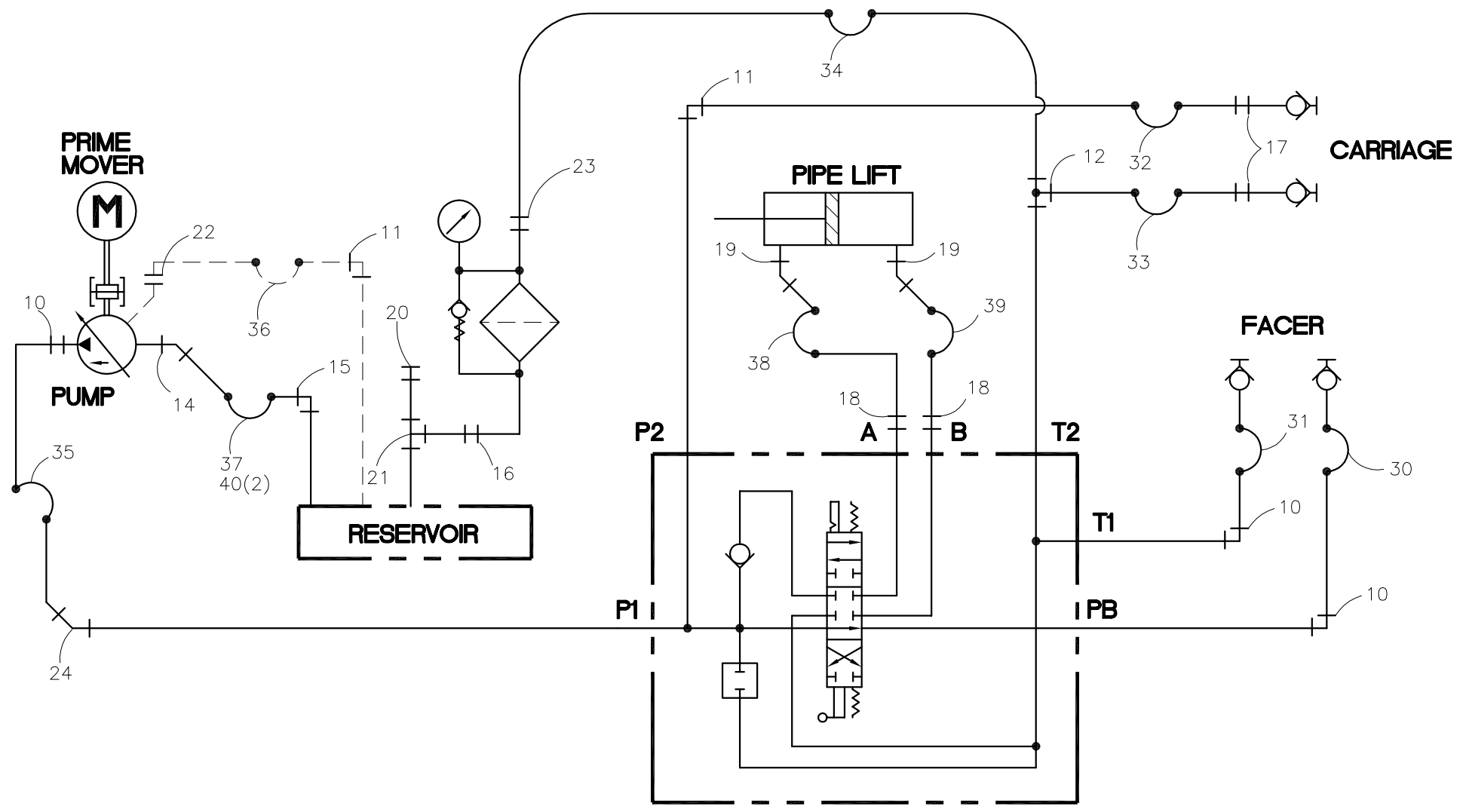




NOTE: THIS DRAWING AND THE INFORMATION CONTAINED THEREIN IS THE CONFIDENTIAL AND PROPRIETARY PROPERTY OF McElroy Manufacturing, Inc. THE DRAWING IS NOT TO BE REPRODUCED IN ANY MANNER, SUBMITTED TO OUTSIDE PARTIES FOR EXAMINATION, OR USED DIRECTLY OR INDIRECTLY FOR THE PURPOSES OTHER THAN THOSE FOR WHICH IT WAS FURNISHED WITHOUT WRITTEN PERMISSION OF McElroy Manufacturing, Inc.

- NOTES:
1. FOR ITEMS 10 THRU 29 ORDER KIT NUMBER A1869201.
 2. FOR ITEMS 30 AND LARGER ORDER KIT NUMBER A1869202.



#412/#618 GAS PLUMBING SCHEMATICParts List

ITEM	PART NO.	QTY.	DESCRIPTION
1	1869201 MFL00041	5ft.	ASSEMBLY 1 1/2 HOSE SLEEVE
	A1869201		#412/#618 FITTING KIT
10	MFQ00012	3	8MSL / 8MSAE ELBOW
11	MFQ00001	2	6MSL / 8MSAE ELBOW
12	MFQ00055	1	8MSL / 8MSL / 8MSAE RUN TEE
13			
14	MFC00128	1	12MSAE / 16 HOSE BARB ELBOW 45
15	MFC00129	1	16MSAE / 16 HOSE BARB ELBOW
16	MFC00119	1	12MSAE / 12MSAE ADAPTER
17	MFQ00047	2	6MSL / 6MSAE BULKHEAD ADAPTER
18	MFQ00011	2	6MSL / 6MSAE ADAPTER
19	MFQ00059	2	8MPT / 8MSL ELBOW 45
20	MFC00085	1	12MSAE PLUG
21	MFC00124	1	12MSAE / 12FSAE / 12FSAE TEE
22	MFQ00061	1	6MSL / 8MSAE ADAPTER
23	MFQ00056	1	8MSL / 12MSAE ADAPTER
24	MFQ00032	1	8MSAE/8MSL ELBOW 45°
	A1869202		#412/#618 GAS HOSE KIT
30	SLCDEJE072	1	HOSE ASSEMBLY OAL 72"
31	SLCDEJE076	1	HOSE ASSEMBLY OAL 76"
32	SLBBDBD015	1	HOSE ASSEMBLY OAL 15
33	SLBBDBE012	1	HOSE ASSEMBLY OAL 12"
34	SLCBEDE028	1	HOSE ASSEMBLY OAL 28"
35	SLCCEBE020	1	HOSE ASSEMBLY OAL 20"
36	SLBBDDD013	1	HOSE ASSEMBLY OAL 13"
37	HNZZZZ036	1	HOSE ASSEMBLY OAL 36"
38	SLBBEDD017	1	HOSE ASSEMBLY OAL 17"
39	SLBBECD015	1	HOSE ASSEMBLY OAL 15"
40	MFD00017	2	HOSE CLAMP

DRAWING REVISION HISTORY LISTING

PART NO: 1869201
DESCRIPTION: #412/#618 GAS PLUMBING SCHEMATIC

<u>APPR.</u>	<u>REV</u>	<u>DATE</u>	<u>BY</u>	<u>DESCRIPTION OF REVISION</u>
BLM	A	09/25/03	BWW	REVISED ITEM 36 FROM SLBBDED013 TO SLBBDDD013 WITH STANDARD SHORT ELBOW FOR EASIER ASSEMBLY.
BLM	B	11/05/03	BWW	REVISED ITEM 13 FROM MFQ00056 TO MFQ00036 AND ITEM 14 FROM MFQ00057 TO MFQ00064. CHANGES MADE DUE TO PUMP CHANGE.
BLM	C	12/03/03	BWW	REVISED QTY OF ITEM 13 MFQ00036 FROM 2 TO 1 AND ADDED ITEM 23 MFQ00056 QTY 1. CHANGE MADE TO CORRECT CHANGE MADE AT REV B.
BLM	D	2/11/04	ALK	REVISED TO ADD "GAS" TO THE DESCRIPTION TO CLARIFY VERSIONS.
BLM	E	3/4/04	ALK	REVISED ITEM 14 FROM MFQ00064 TO MFC00128, ITEM 15 FROM MFQ00058 TO MFC00129, AND ITEM 37 FROM SLNBIBI034 TO HNZZZZ036. ADDED ITEM 40 MFD00017.
BWJ	F	12/21/04	BWW	CORRECTED ITEM 23 MFQ00056 TO INDICATE CORRECT "12MSAE". INCORRECTLY ADDED AT REV. C.
SPA	G	06/01/05	JAB	REVISED TO REPLACE ITEM 13 (MFQ00036) WITH ITEM 10 (MFQ00012) AND CHANGE QTY OF ITEM 10 FROM (3) TO (4). ALSO, CHANGE ITEM 35 FROM (SLCCEKE020) TO (SLCCELE019). ALL CHANGES WERE MADE TO ALLOW PROPER CLEARANCE FOR THE PIPE LIFT CYLINDER.
SPA	H	8/4/05	MLM	REVISED TO CHANGE QTY. OF ITEM-10 FROM 4 TO 3. ADDED ITEM-24 (MFQ00032), AND REVISED ITEM-35 FROM SLCCELE019 TO SLCCEBE020. ALL CHANGES MADE TO IMPROVE ASSEMBLY.
SWB	J	11/18/05	JAB	ADDED NOTES 1 & 2 TO FACE OF DRAWING.