



McElroy Manufacturing, Inc.

The leader by design.

Tulsa, Oklahoma U.S.A.

DRAWN: TLW

CHECK: TMT

APPRVD: SWB

DATE: 2/4/97

SHT No: 1

REV No: F

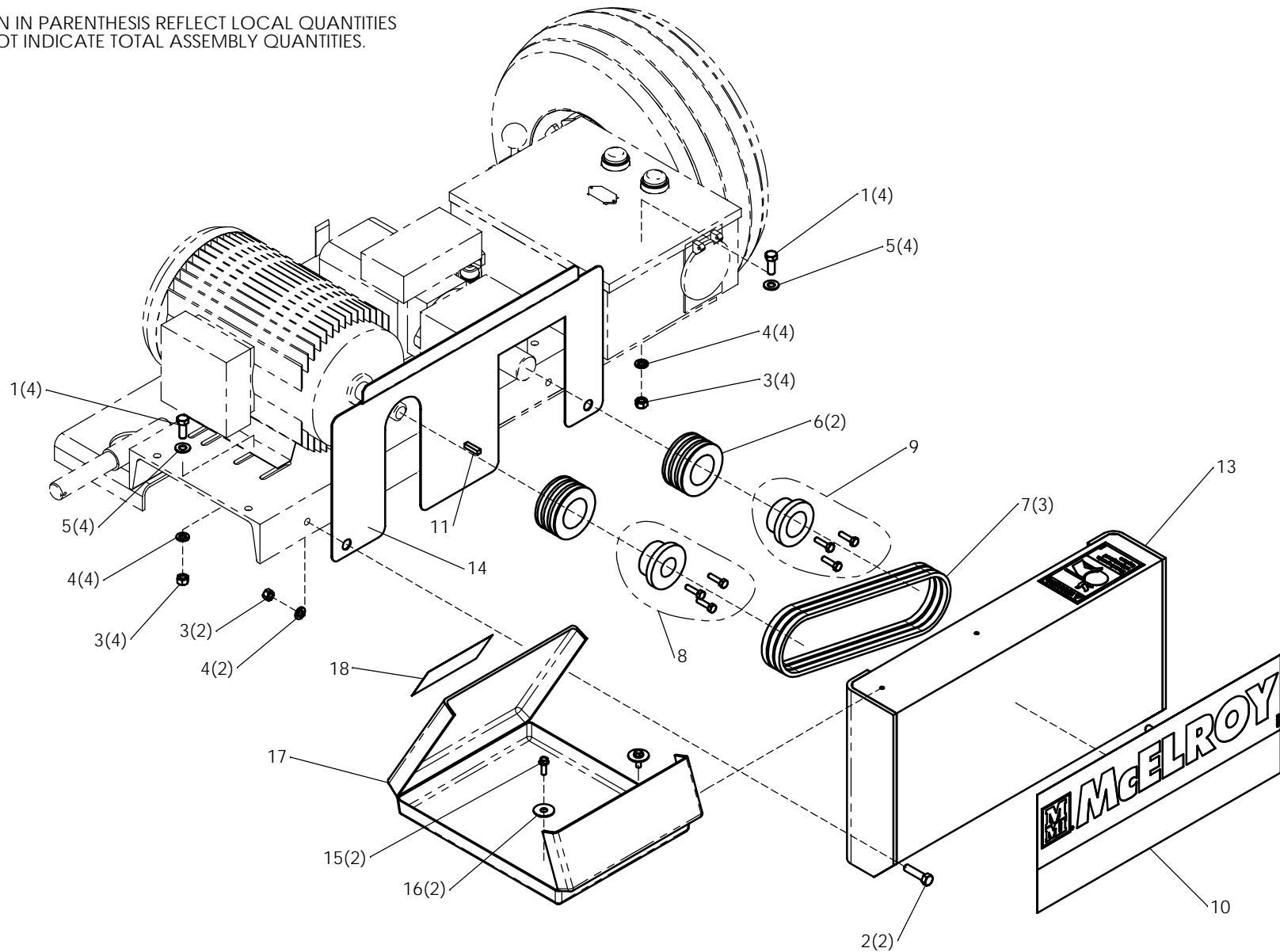
PART No: 1824201

412/# 618 ELECTRIC BELT DRIVE ASSEMBLY

NOTE: THIS DRAWING AND THE INFORMATION CONTAINED THEREIN IS THE CONFIDENTIAL AND PROPRIETARY PROPERTY OF McElroy Manufacturing, Inc. THE DRAWING IS NOT TO BE REPRODUCED IN ANY MANNER, SUBMITTED TO OUTSIDE PARTIES FOR EXAMINATION, OR USED DIRECTLY OR INDIRECTLY FOR THE PURPOSES OTHER THAN THOSE FOR WHICH IT WAS FURNISHED WITHOUT WRITTEN PERMISSION OF McElroy Manufacturing, Inc.

NOTES:

- 1. ITEMS SHOWN IN PARENTHESIS REFLECT LOCAL QUANTITIES AND MAY NOT INDICATE TOTAL ASSEMBLY QUANTITIES.



#412/#618 ELECTRIC BELT DRIVE ASSEMBLYParts List

ITEM	PART NO.	QTY.	DESCRIPTION
	1824201		ASSEMBLY
1	MAB00064	8	3/8-16NC x 1" LG. HHCS
2	MAB00066	2	3/8-16NC x 1 1/2 LG. HHCS
3	MBA00007	10	3/8-16NC FINISHED HEX NUT
4	MBE00007	10	3/8 REGULAR SPLIT LOCK WASHER
5	MBF00007	8	3/8 TYPE 'A' WIDE FLAT WASHER
6	MDD00009	2	3V, 3 GROOVE SHEAVE 3.65 O.D.
7	MDE00002	3	3V 315 BELT
8	MDH00024	1	Q.D. HUB SH W/1-1/8 DIA. BORE
9	MDH00022	1	Q.D. HUB SH W/1-1/2 DIA. BORE
10	8163121	1	McELROY LABEL
11	MCK00038	1	1/4 x 1/4 x 1" LG. KEY, SQ. ENDS
12			
13	1855301	1	ELECTRIC BELT GUARD WELDMENT
14	1855303	1	BROOK HANSEN FRONT ELECTRIC BELT GUARD
15	MAH00109	2	1/4-20NC x 3/4 LG. HHWF TYPE 'F' ST SCREW
16	MBG00031	2	1/4 FENDER WASHER
17	MJQ00260	1	8 1/2 x 11 LITERATURE COMPARTMENT
18	816342	1	SAFETY INSTRUCTIONS MANUAL LABEL

DRAWING REVISION HISTORY LISTING

PART NO: 1824201
DESCRIPTION: #412/#618 ELECTRIC BELT DRIVE ASSEMBLY

<u>APPR.</u>	<u>REV</u>	<u>DATE</u>	<u>BY</u>	<u>DESCRIPTION OF REVISION</u>
SWB	A	1/19/98	DJL	ITEM 14 WAS 1855302 (FRONT ELECTRICAL BELT GUARD WELDMENT) CHANGED ELECTRICAL MOTORS TO BROOK HANSEN UNIVERSAL WIDE BAND.
TLW	B	02/23/98	RLE	ADDED ITEM 18, 816342
TLW	---	2/1/99	MLM	ITEM 11 WAS 1853002, REVISED TO USE PURCHASED KEY.
BWJ	C	8/25/03	RLE	REVISED ITEM #10 1813209 TO 1813204 TO USE GAS BELT GUARD DECAL.
SWB	D	01/06/05	BWW	REVISED ITEM 10 FROM 1813204 TO 8163121 FOR NEW BRANDING LABEL.
SWB	E	06/15/05	BWW	CREATED ISOMETRIC VIEW AND ADDED NOTE 1 FOR CLARITY.
SWB	F	12/19/05	JAB	CORRECTED TO ADD ITEM 14 CALLOUT ON FACE OF DRAWING.