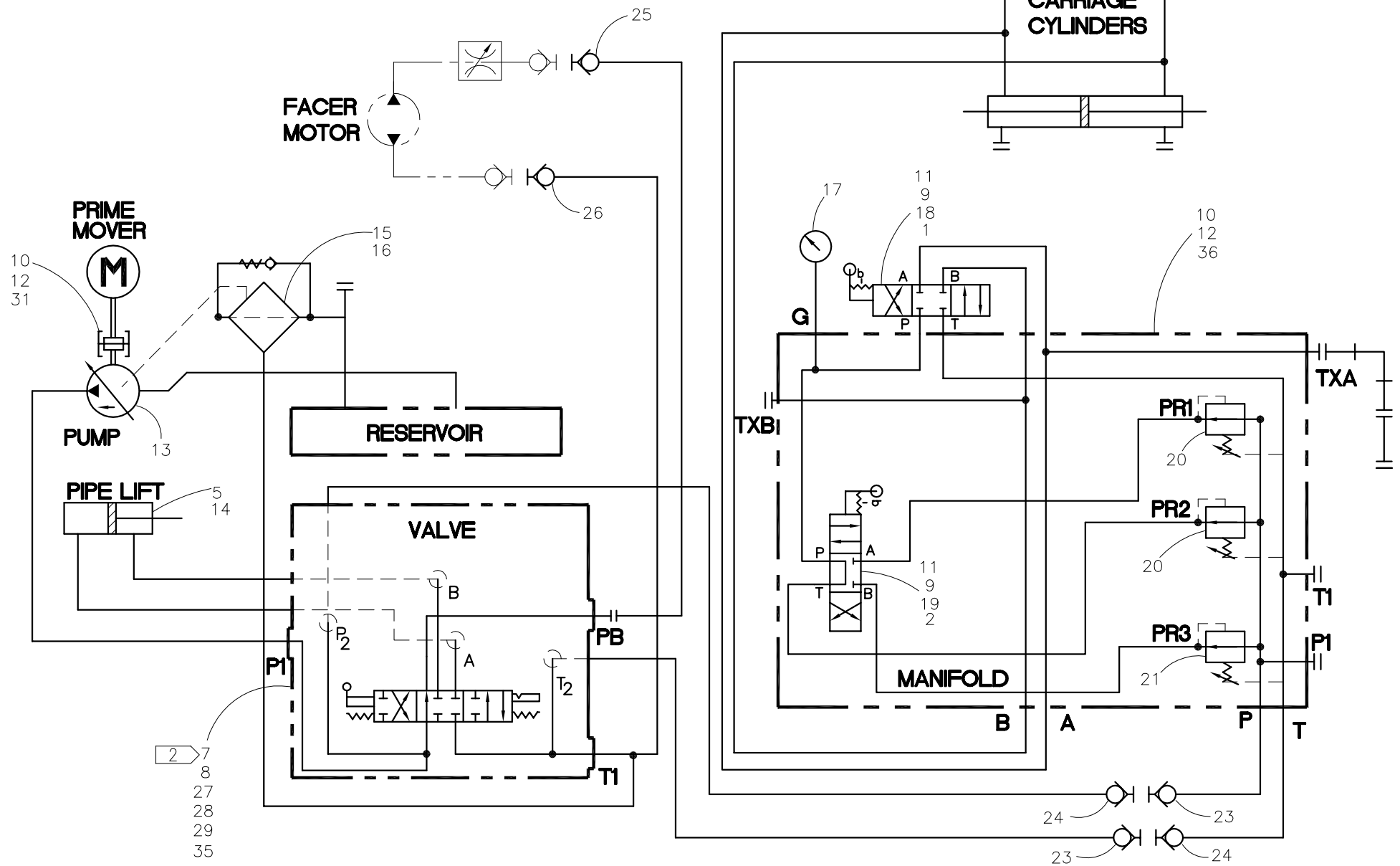




NOTE: THIS DRAWING AND THE INFORMATION CONTAINED THEREIN IS THE CONFIDENTIAL AND PROPRIETARY PROPERTY OF McElroy Manufacturing, Inc. THE DRAWING IS NOT TO BE REPRODUCED IN ANY MANNER, SUBMITTED TO OUTSIDE PARTIES FOR EXAMINATION, OR USED DIRECTLY OR INDIRECTLY FOR THE PURPOSES OTHER THAN THOSE FOR WHICH IT WAS FURNISHED WITHOUT WRITTEN PERMISSION OF McElroy Manufacturing, Inc.



UNLESS NOTED OTHERWISE: (3) PLC. DIM'S .XXX = ±0.005" (2) PLC. DIM'S .XX = ±0.010" FRACTIONAL DIM'S = ±1/32"

ANGULAR DIM'S = ±1/4" REMOVE ALL BURRS BREAK ALL SHARP EDGES

STAMP OR ETCH P/N ON ALL DETAIL PARTS

MMI NUMBER	ITEM	QTY.	ASSEMBLY	SIZE AND DESCRIPTION

#412 / #618 HYDRAULIC SCHEMATIC

Parts List

ITEM	PART NO.	QTY.	DESCRIPTION
	1822801		ASSEMBLY
1	816330	1	CARRIAGE OPEN/CLOSE LABEL
2	816331	1	SELECTOR VALVE LABEL
3			
4			
5	1237301	1	FEMALE ROD EYE
6			
7	MEF00079	1	DIRECTIONAL CONTROL VALVE
8	MEF00077	1	VALVE HANDLE LEVER
9	MAN00008	8	10-24NC X 1"LG SHCS SS
10	MAB00064	6	3/8-16NC X 1"LG HHCS
11	MBE00004	8	#10 REGULAR SPLIT LOCK WASHER
12	MBE00007	6	3/8" REGULAR SPLIT LOCK WASHER
13	MEA00026	1	PISTON PUMP
14	MEB00128	1	3-1/2"B X 3"S HYD CYLINDER
15	MED00049	1	FILTER HEAD
16	MED00017	1	FILTER ELEMENT
17	MEE00003	1	PRESSURE GAUGE
18	MEF00013	1	DIRECTIONAL VALVE
19	MEF00014	1	DIRECTIONAL VALVE
20	MEG00001	2	REDUCING VALVE
21	MEG00002	1	REDUCING VALVE
22			
23	MFH00001	2	1/4"FPT QUICK DISCONNECT COUPLER
24	MFH00002	2	1/4"FPT QUICK DISCONNECT NIPPLE
25	MFH00003	1	3/8"FPT QUICK DISCONNECT COUPLER
26	MFH00004	1	3/8"FPT QUICK DISCONNECT NIPPLE
27	MAB00040	2	5/16-18NC X 2 3/4 LG HHCS
28	MBE00006	2	5/16 LOCK WASHER
29	MBA00006	2	5/16-18NC LOCK NUT
30			
31	1813402	1	#412/#618 BEARING HOUSING ASSEMBLY
32			
33			
34			
35	816305	1	PIPE LIFT LABEL
36	1814002	1	CARRIAGE MANIFOLD ASSEMBLY

NOTES:

- 1.
2. VALVE HANDLE LEVER MEF00077, MUST BE PURCHASED SEPARATELY

DRAWING REVISION HISTORY LISTING

PART NO: 1822801
DESCRIPTION: #412/#618 HYDRAULIC SCHEMATIC

<u>APPR.</u>	<u>REV</u>	<u>DATE</u>	<u>BY</u>	<u>DESCRIPTION OF REVISION</u>
SWB	A	8/08/97	BB	REMOVED ITEM #1 816301 & ITEM #6 1814001, BECAUSE THEY WERE CONTAINED IN ITEM #36, ADDED ITEM #36 1814002. CORRECTED FILTER SYMBOL BY ADDING BY-PASS. RE-ARRANGED SCHEMATIC TO REPRESENT AS-BUILT CONDITION.
TLW	B	12/30/97	JPS	DREW DATA LOGGER FITTINGS @ PORT TXA. CORRECTED ITEMS 3 & 4 LABELS BY REVISING CALLOUTS ON DRAWING. MOVED CALLOUTS FOR ITEMS 9 & 11 TO VALVE CALLOUT FOR CLARITY.
DWP	C	6/2/99	MRP	REVISED ITEM #7 MEF00079 FROM A SPRING CENTERED VALVE TO A SPRING CENTERED VALVE WITH DETENT IN DOWN POSITION TO PREVENT BLEED OFF PRESSURE FROM RAISING PIPE LIFT. CREATED REPLACEMENT VALVE VALVE BOX LEVER MEF00114 FOR ALL UNITS PRIOR TO THIS REVISION.
TLW	-	7/22/99	MRP	REVISED ITEM #18 FROM MEF00013 TO MEF00085 AND ITEM #19 FROM MEF00014 TO MEF00086. TO ARON VALVES FOR PRIMARY SOURCE AND CONTINENTAL VALVES FOR REPLACEMENTS.
TLW	D	10/13/99	MLM	REMOVED ITEMS 3 & 4 (816330)(816331)NOT USED W/ARON VALVE. ADDED LABELS TO NOTE 1 TO BE INCLUDED WITH REPLACEMENT VALVE.
TLW	E	3/28/00	MRP	CORRECTED CALLOUT ON DRAWING FOR VALVES, ITEMS 18 AND 19. THEY WERE SWITCHED ON REV. A WHEN SCHEMATIC WAS REARRANGED TO AS BUILT.
SWB	F	8/14/01	RLE	ADDED MEF00077, VALVE HANDLE LEVER, QTY. (2) BECAUSE HANDLE NO LONGER COMES WITH VALVE.
SWB	G	2/14/02	ALK	CORRECTED QTY. ON ITEM 8 (MEF00077) FROM 2 TO 1. ADDED NOTE 2 TO CLARIFY VALVE HANDLE LEVERS MUST BE PURCHASED SEPARATELY.
SWB	H	07/29/02	BWW	REVISED TO REMOVE ITEM 2 816302 AND ITEM 22 MEI00001. CHANGED QTY OF ITEM 25 MFH00003 FROM 2 TO 1 AND ITEM 26 MFH00004 FROM 2 TO 1. PARTS MOVED TO 1834103 FACER HYDRAULIC/PLUMBING SCHEMATIC.
LAA	-	04/15/03	BWW	CHANGED ITEM 14 FROM MEB00104 TO MEB00128 TO INCORPORATE CARLSON WELDED CYLINDER.
SWB	J	01/07/04	BWW	REVISED ITEM 18 MEF00085 TO MEF00013 AND ITEM 19 MEF00086 TO MEF00014. ADDED NEW ITEMS 1 816330 QTY 1 AND 2 816331 QTY 1. REMOVED NOTE 1 FOR VALVE REPLACEMENT PARTS. CHANGES MADE DUE TO PHASE OUT OF ARON VALVES TO CONTINENTAL.