

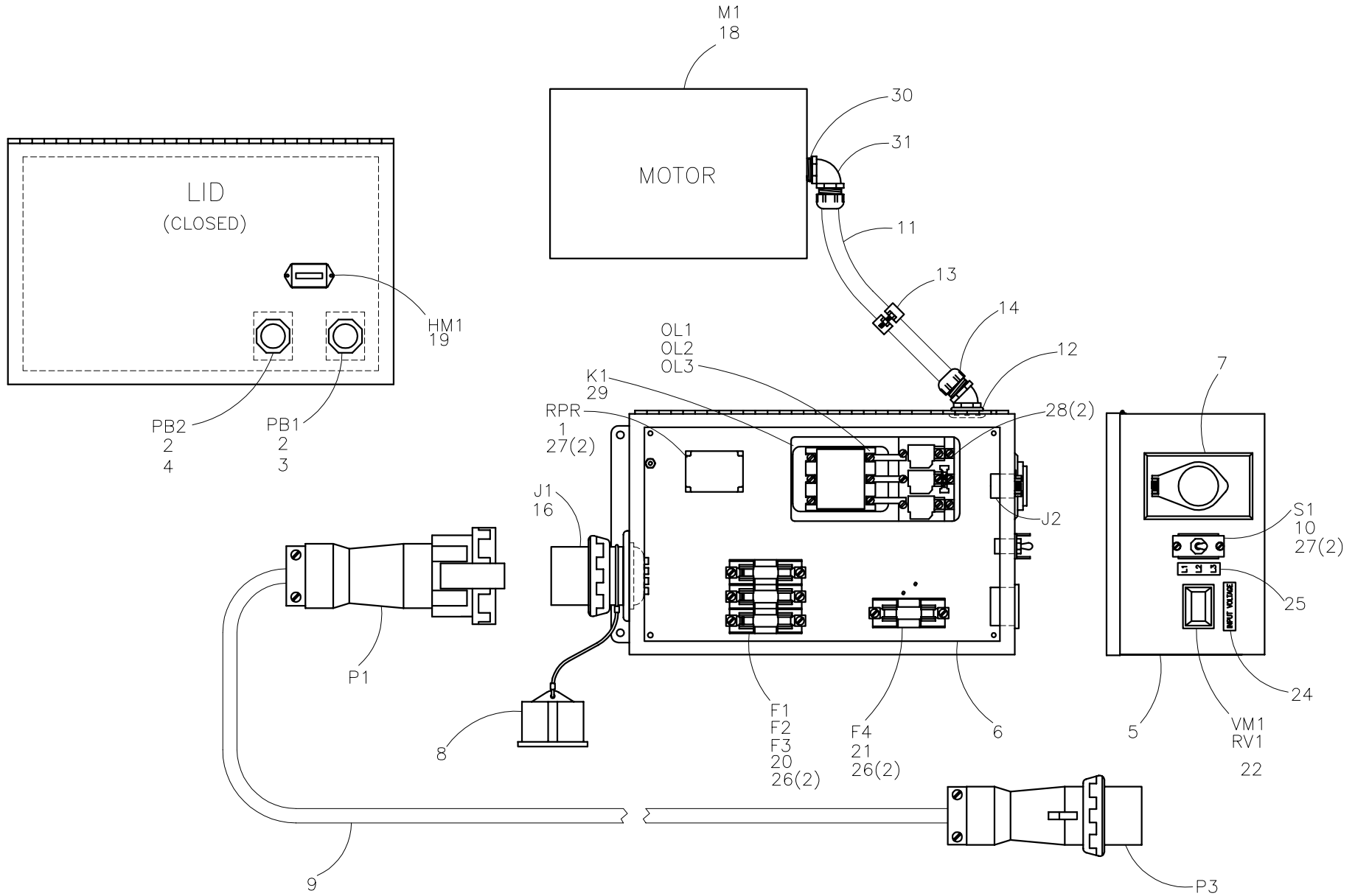


McElroy Manufacturing, Inc.
 The leader by design.
 Tulsa, Oklahoma U.S.A.

DRAWN: AH	CHECK: SWB	APPRV'D: B	DATE: 2/17/97	DWG No: 1243700	SHT No: 1	REV No: F	PART No: 1243701
#412 ELECTRICAL POWER ASSEMBLY 415V, 50Hz, 3Ph							CAD No: 1243701

NOTE: THIS DRAWING AND THE INFORMATION CONTAINED THEREIN IS THE CONFIDENTIAL AND PROPRIETARY PROPERTY OF McElroy Manufacturing, Inc. THE DRAWING IS NOT TO BE REPRODUCED IN ANY MANNER, SUBMITTED OUTSIDE PARTIES FOR EXAMINATION, OR USED DIRECTLY OR INDIRECTLY FOR THE PURPOSES OTHER THAN THOSE FOR WHICH IT WAS FURNISHED WITHOUT WRITTEN PERMISSION OF McElroy Manufacturing, Inc.

- NOTES:
1. WIRE PER DRAWING 1855801.
 2. ITEMS 15, 17 AND 23 ARE NOT SHOWN.
 3. F5 THRU F8 ARE SPARES.
 4. ITEMS SHOWN IN PARENTHESIS REFLECT QUANTITIES IN A LOCAL GROUP AND MAY NOT INDICATE TOTAL ASSEMBLY QUANTITIES.



**#412 ELECTRICAL POWER ASSEMBLY
415V, 50Hz, 3Ph**

Parts List

ITEM	PART NO.	QTY.	DESCRIPTION
	1243701		ASSEMBLY
F1,F2,F3,F5,F6,F7	MLN00250	6	8 AMP FUSE, FNQ-8
F4,F8	MLN00006	2	15 AMP FUSE, NON-15
HM1	MKH00005	1	HOUR METER
J1	MLB00026	1	ELECTRICAL INLET
J2	MLB00006	1	ELECTRICAL RECEPTACLE
K1	MLN00034	1	MOTOR STARTER
M1	MDB00078	1	3HP INDUCTION MOTOR
OL1,OL2,OL3	MLN00248	3	THERMAL OVERLOAD UNIT
P1	MLF00035	1	ELECTRICAL CONNECTOR
P3	MLF00036	1	ELECTRICAL PLUG
PB1,PB2	MKC00001	2	PUSHBUTTON
RPR	MKB00003	1	REVERSE PHASE RELAY
RV1	MQH00031	1	METAL OXIDE VARISTOR
S1	MKE00009	1	TOGGLE SWITCH
VM1	MKH00080	1	DIGITAL VOLTMETER
1	MKB00004	1	RELAY SOCKET
2	MKC00002	2	CONTACT BLOCK
3	MKC00003	1	RED PROTECTIVE CAP
4	MKC00004	1	GREEN PROTECTIVE CAP
5	1823302	1	ELECTRICAL BOX MODIFICATION
6	1823303	1	ELECTRICAL PANEL MODIFICATION
7	MLB00004	1	RECEPTACLE COVER
8	MLB00027	1	CLOSURE PLUG
9	MLE00037	30FT	ELECTRICAL CABLE
10	MLG00001	1	SWITCH GUARD
11	MLI00001	3FT	1/2 FLEXIBLE CONDUIT
12	MLJ00004	1	1/2 SEAL RING
13	MLJ00008	1	CONDUIT HANGER
14	MLJ00006	1	1/2 X 45 DEG CONDUIT CONNECTOR
15	MLL00002	20FT	#14 MTW/TEW ELEC WIRE, BLACK
16	MLL00011	1.25FT	#10 THHN/THWN ELEC WIRE, BLACK
17	MLM00001	8	14-16 X #8 RING TERMINAL
18	MLM00016	4	2/16-6/10 WIRE NUT
19	MLM00017	2	14-16X1/4 FEMALE DISCONNECT
20	MLN00085	1	FUSE BLOCK
21	MLN00004	1	FUSE BLOCK
22	MLN00384	1	VOLTMETER BEZEL
23	1824201	1	#412/618 ELECTRIC BELT DRIVE
24	816327	1	VOLTMETER PLACARD
25	816328	1	SWITCH PLACARD

#412 ELECTRICAL POWER ASSEMBLY
415V, 50Hz, 3Ph

Parts List

ITEM	PART NO.	QTY.	DESCRIPTION
26	MAH00034	4	#8-32NC X 1/2LG RHSMS
27	MAH00036	4	#6-32NC X 3/8LG HHWF TYPE 'F'ST SCR
28	MAH00026	2	#10-32NF X 5/8LG RHSMS
29	MAC00278	1	#10-32NF X 3/4LG SHCS
30	MLN00024	1	3/4 -1/2 REDUCER BUSHING
31	MLJ00017	1	1/2 X 90 DEG CONDUIT CONNECTOR

DRAWING REVISION HISTORY LISTING

PART NO: 1243701

DESCRIPTION: #412 ELECTRICAL POWER ASSEMBLY 415V, 50Hz, 3Ph

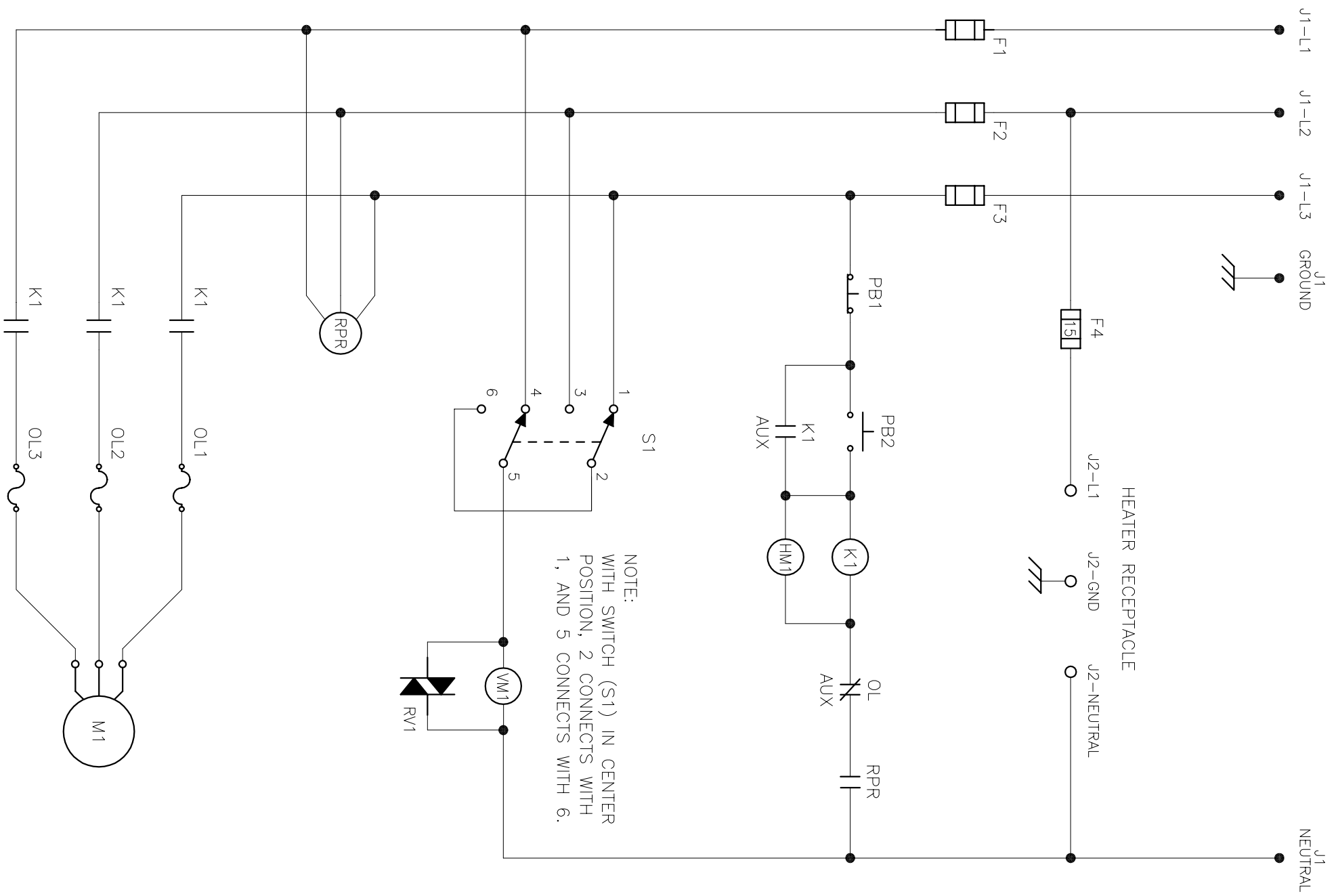
<u>APPR.</u>	<u>REV</u>	<u>DATE</u>	<u>BY</u>	<u>DESCRIPTION OF REVISION</u>
RAD	A	5/9/97	BEA	REDRAWN FOR NEW BOX SIZE WITH ACCURATELY DIMENSIONED PARTS.
TMT	B	9/24/97	DJL	ITEM 5 WAS ELECTRICAL BOX (MLA00114). ITEM 6 WAS ELECTRICAL PANEL (MLA00115). MADE ELECTRICAL BOX AND PANEL MODIFICATION DRAWING TO DOCUMENT HOLES. ITEM 14 WAS 90 DEGREE CONDUIT CONNECTOR (MLJ00017). ITEM 16 WAS #12 WIRE (MLL00003). REMOVED ITEM 19 GROUND LUG (MLM00037), NOT NEEDED. ADDED ITEMS 26-29 (MTG HARDWARE).
RAD	C	1/20/98	DJL	M1 MOTOR WAS MDB00026. REPLACED BY MDB00078 UNIVERSAL WIDE BAND MOTOR.
TLW	D	7/21/00	BWW	ADDED ITEM 19 QUICK SLIDE CONNECTOR AND CHANGED QTY OF ITEM 17 RING TERMINAL FROM 10 TO 8. REVISED PART NO. FOR ITEM HM1 FROM MKH00037 TO MKH00005. SEE PCR 99037.
PJB	E	12/29/03	BEA	MADE THE FOLLOWING CHANGES TO IMPROVE MOTOR WIRING: CHANGED QTY OF ITEM 12 (MLJ00004) SEAL RING FROM 2 TO 1. CHANGED QTY OF ITEM 14 (MLJ00006) 1/2 X 45 DEG CONDUIT CONNECTOR FROM 2 TO 1. ADDED ITEM 30 (MLN00024) REDUCER BUSHING. ADDED ITEM 31 (MLJ00017) 1/2 X 90 DEG CONDUIT CONNECTOR.
SWB	F	11/23/05	JAB	MOVED NOTES TO FACE OF DRAWING. ADDED NOTE 4 FOR CLARITY.



McElroy Manufacturing, Inc.
The leader by design.
Tulsa, Oklahoma U.S.A.

DRAWN: AH	CHECK: SWB	APPRV'D: B	DATE: 2/19/97	DWG No: 1855800	SHT No: 1A	REV No: B	PART No:
#412/#618 ELECTRICAL SCHEMATIC 415V, 50Hz, 3Ph							CAD No: 1855801

NOTE: THIS DRAWING AND THE INFORMATION CONTAINED THEREIN IS THE CONFIDENTIAL AND PROPRIETARY PROPERTY OF McElroy Manufacturing, Inc. THE DRAWING IS NOT TO BE REPRODUCED IN ANY MANNER, SUBMITTED OUTSIDE PARTIES FOR EXAMINATION, OR USED DIRECTLY OR INDIRECTLY FOR THE PURPOSES OTHER THAN THOSE FOR WHICH IT WAS FURNISHED WITHOUT WRITTEN PERMISSION OF McElroy Manufacturing, Inc.

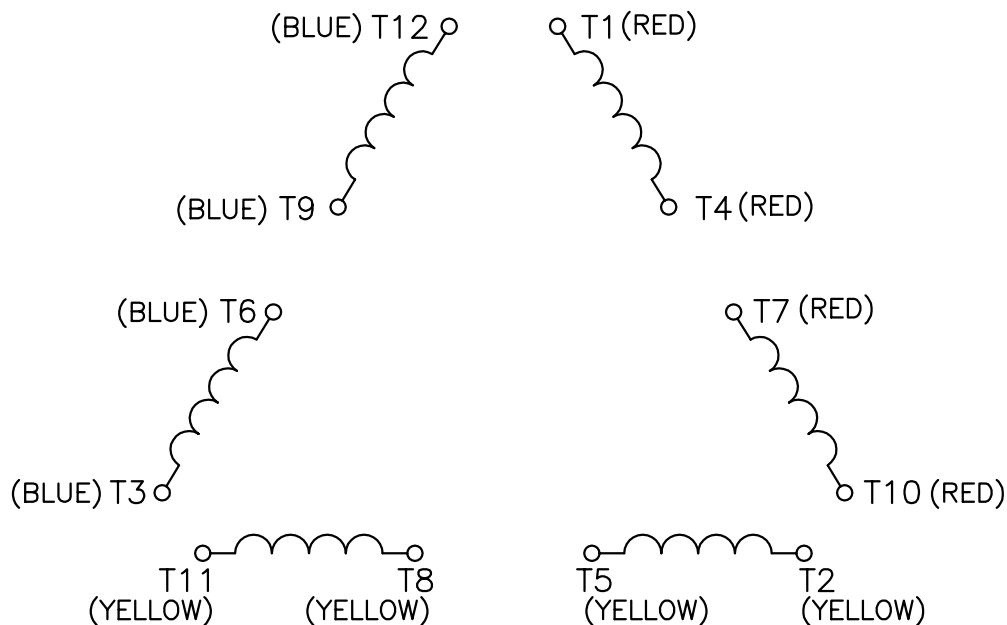


NOTE:
WITH SWITCH (S1) IN CENTER POSITION, 2 CONNECTS WITH 1, AND 5 CONNECTS WITH 6.



NOTE: THIS DRAWING AND THE INFORMATION CONTAINED THEREIN IS THE CONFIDENTIAL AND PROPRIETARY PROPERTY OF McElroy Manufacturing, Inc. THE DRAWING IS NOT TO BE REPRODUCED IN ANY MANNER, SUBMITTED OUTSIDE PARTIES FOR EXAMINATION, OR USED DIRECTLY OR INDIRECTLY FOR THE PURPOSES OTHER THAN THOSE FOR WHICH IT WAS FURNISHED WITHOUT WRITTEN PERMISSION OF McElroy Manufacturing, Inc.

WHEN APPLICABLE COLORED LEADS / AS SHOWN WITHIN BRACKETS



CONNECTION DIAGRAM FOR A THREE PHASE MOTOR WITH 12 WIRE OUT FOR TRIPLE VOLTAGE CONNECTION NEMA MARKINGS

50 HZ SUPPLY	60 HZ SUPPLY	LINK TOGETHER
LOW	LOW	T1-T12-T6-T7 T2-T10-T4-T8 T3-T11-T5-T9
HIGH	MEDIUM	T1-T12 T2-T10 T3-T11 T4-T7 T5-T8 T6-T9
- - -	HIGH	T4-T7-T12 T5-T8-T10 T6-T9-T11
ALL	ALL	CONNECT SUPPLY TO T1 T2 T3
TO REVERSE DIRECTION OF ROTATION INTERCHANGE ANY TWO SUPPLY LEADS		

DRAWING REVISION HISTORY LISTING

PART NO: 1855801

DESCRIPTION: #412/#618 ELECTRICAL SCHEMATIC 415V, 50Hz, 3Ph

<u>APPR.</u>	<u>REV</u>	<u>DATE</u>	<u>BY</u>	<u>DESCRIPTION OF REVISION</u>
--------------	------------	-------------	-----------	--------------------------------

RAD	A	5/9/97	BEA	MOVED VOLTMETER CIRCUIT DOWNSTREAM OF FUSES.
-----	---	--------	-----	--

RAD	B	1/23/98	DJL	ADDED SHEET 1B WHICH INCLUDES THE CONNECTION DIAGRAM FOR THREE PHASE MOTOR FOR TRIPLE VOLTAGE CONNECTION.
-----	---	---------	-----	---