

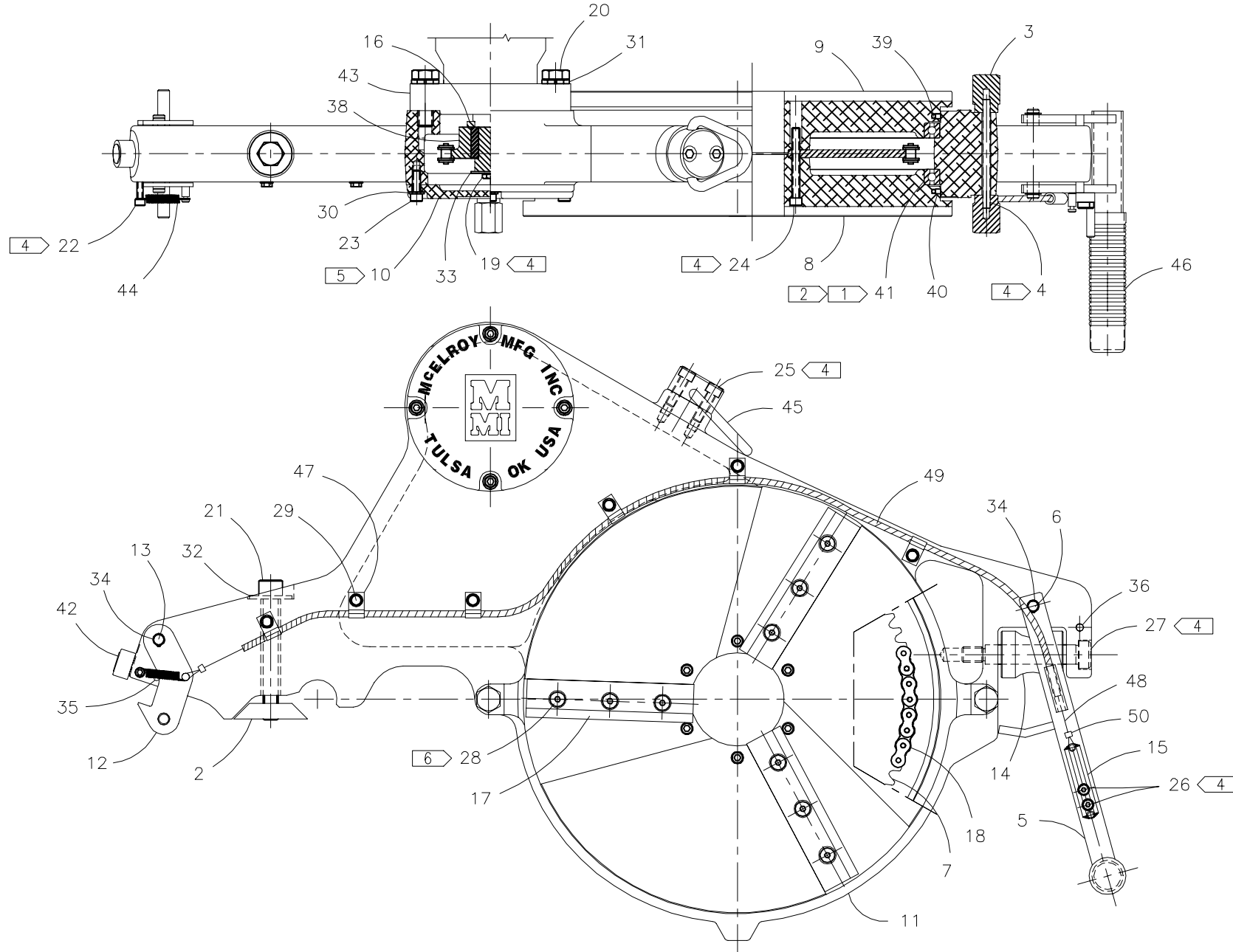


**McElroy Manufacturing, Inc.**  
The leader by design.  
Tulsa, Oklahoma U.S.A.

DRAWN: SS CHECK: SWB APPR'D: B DATE: 2/10/97 DWG No: 1231500 SHT No: 3 REV No: C PART No: 1231503

#412 DIPS FACER ASSEMBLY CAD No: 1231503

NOTE: THIS DRAWING AND THE INFORMATION CONTAINED THEREIN IS THE CONFIDENTIAL AND PROPRIETARY PROPERTY OF McElroy Manufacturing, Inc. THE DRAWING IS NOT TO BE REPRODUCED IN ANY MANNER, SUBMITTED OUTSIDE PARTIES FOR EXAMINATION, OR USED DIRECTLY OR INDIRECTLY FOR THE PURPOSES OTHER THAN THOSE FOR WHICH IT WAS FURNISHED WITHOUT WRITTEN PERMISSION OF McElroy Manufacturing, Inc.



**#412 DIPS FACER ASSEMBLY**PARTS LIST

ITEM	PART NO.	QTY	DESCRIPTION
	<b>1231503</b>		<b>ASSEMBLY</b>
1			
2	816101	1	WEDGE
3	1204001	4	REST BUTTON
4	1210601	2	REST BUTTON MOUNTING SCREW
5	1225201	1	LATCH HANDLE
6	1225402	1	LATCH HANDLE PIVOT PIN
7	1230901	1	DRIVEN SPROCKET
8	1231002	1	DIPS BLADE HOLDER
9	1231003	1	DIPS BLADE HOLDER
10	1231102	1	COVER PLATE
11	1231303	1	DIPS FACER BODY
12	1805501	1	FACER LATCH
13	1806702	1	LATCH PIVOT PIN
14	1809101	1	GUIDE ROD ROLLER
15	1818703	1	RELEASE TRIGGER
16	1835401	1	SPACER
17	3615714	1	DIPS BLADE SET
18	A1223601	1	CHAIN ASSEMBLY
19	MAB00002	1	1/4-20NC x 1/2 LG. HHCS
20	MAB00069	2	1/2-13NC x 1-1/2 LG. HHCS
21	MAN00018	1	1/2-13NC x 4" LG. SHCS SS
22	MAC00038	1	10-24NC x 3/4 LG. SHCS SS
23	MAH00052	4	1/4-20NC x 3/4 LG. SHCS SS
24	MAC00060	6	1/4-20NC x 2-1/4 LG. SHCS
25	MAC00075	2	5/16-18NC x 1" LG. SHCS
26	MAF00001	2	1/4 DIA. x 3/8 LG. SOCKET HEAD SHOULDER SCREW
27	MAF00069	1	5/8 DIA. x 3" LG. SOCKET HEAD SHOULDER SCREW
28	MAH00073	18	1/4-20NC x 5/8 LG. FHSCS SS
29	MAH00111	6	#10-24NC x 1/2 LG. HHWF ROLL FORMING TAPPING SCREW
30	MBE00005	4	1/4" REGULAR SPLIT LOCK WASHER
31	MBE00009	2	1/2" REGULAR SPLIT LOCK WASHER
32	MBF00009	1	1/2" TYPE 'A' WIDE FLAT WASHER
33	MBG00031	1	1/4" FENDER WASHER
34	MCB00017	4	EXT SNAP RING

**#412 DIPS FACER ASSEMBLY**PARTS LIST (Continued)

ITEM	PART NO.	QTY	DESCRIPTION
35	MCG00005	1	3/16 DIA. x 1" LG. ROLL PIN
36	MCG00012	1	1/4 DIA. x 2-1/2 LG. ROLL PIN
37			
38	MDF00029	1	1" BORE, 1/4 KEY, #40BS18 DRIVE SPROCKET
39	MDL00042	2	'O' RING
40	1234401	2	SLIPPER SEAL
41	MDM00031	2	BALL BEARING
42	MDM00055	1	CAM FOLLOWER
43	MEC00004	1	HYD MOTOR
44	MJE00001	1	SPRING
45	MJH00001	1	HOIST RING
46	MJJ00002	1	HAND GRIP
47	MJQ00024	6	JIFFY CLIP
48	MJQ00025	3.167FT.	COATED CABLE
49	MJQ00027	2.6FT.	.190 OD x .080 ID x .055 W/CLOSE WOUND SPRING
50	MJQ00046	2	FERRULE
51	1834103	1	FACER HYDRAULIC/PLUMBING SCHEMATIC (NOT SHOWN)

**NOTES:**

1. PACK BEARINGS WITH EP GREASE.
2. INSTALL WITH A HIGH STRENGTH RETAINING COMPOUND USING A COMPATIBLE CLEANER FIRST.
3. FILL FACER CAVITY 2/3 FULL WITH EP GREASE.
4. INSTALL WITH MEDIUM STRENGTH THREAD LOCKING COMPOUND.
5. INSTALL WITH GASKET SEALER.
6. INSTALL WITH HIGH TEMPERATURE ANTI-SEIZE COMPOUND.
7. GRIND KEY SUPPLIED WITH MOTOR TO CLEAR ITEM-16 (SPACER).

## DRAWING REVISION HISTORY LISTING

**PART NO:** 1231503

**DESCRIPTION:** #412 DIPS FACER ASSEMBLY

<u>APPR.</u>	<u>REV</u>	<u>DATE</u>	<u>BY</u>	<u>DESCRIPTION OF REVISION</u>
TLW	--	02/24/987	RLE	CORRECTED QTY.ON ITEM 48, MJQ00025, WAS (1) & ON ITEM 49, MJQ00027, WAS (1).
TLW	--	8/10/99	MRP	REVISED ITEM #23 FROM MAC00053 TO MAH00052
TLW	A	12/13/99	DJL	REVISED ITEM -40 FROM MDL00072 SEAL TO 1234401 SLIPPER SEAL. REMOVED NOTE 6.
SWB	-	07/29/02	BWW	ADDED ITEM 51 1834103 QTY 1. CHANGE MADE TO BE CONSISTENT WITH OTHER FACER ASSEMBLIES.
LAA	B	2/5/03	ALK	REVISED TO REMOVE ITEM-37 (#808 WOODRUFF KEY), AND ADDED NOTE 6. Grind key supplied with motor to clear item-16(Spacer).
SWB	C	3/18/03	RLE	REVISED NOTES TO AGREE WITH ENGINEERING STANDARDS.