



McElroy Manufacturing, Inc.

The leader by design.

Tulsa, Oklahoma U.S.A.

DRAWN: RLE

CHECK: BWP

APPRVD: TLW

DATE: 10/30/00

SHT No: 1

REV No: M

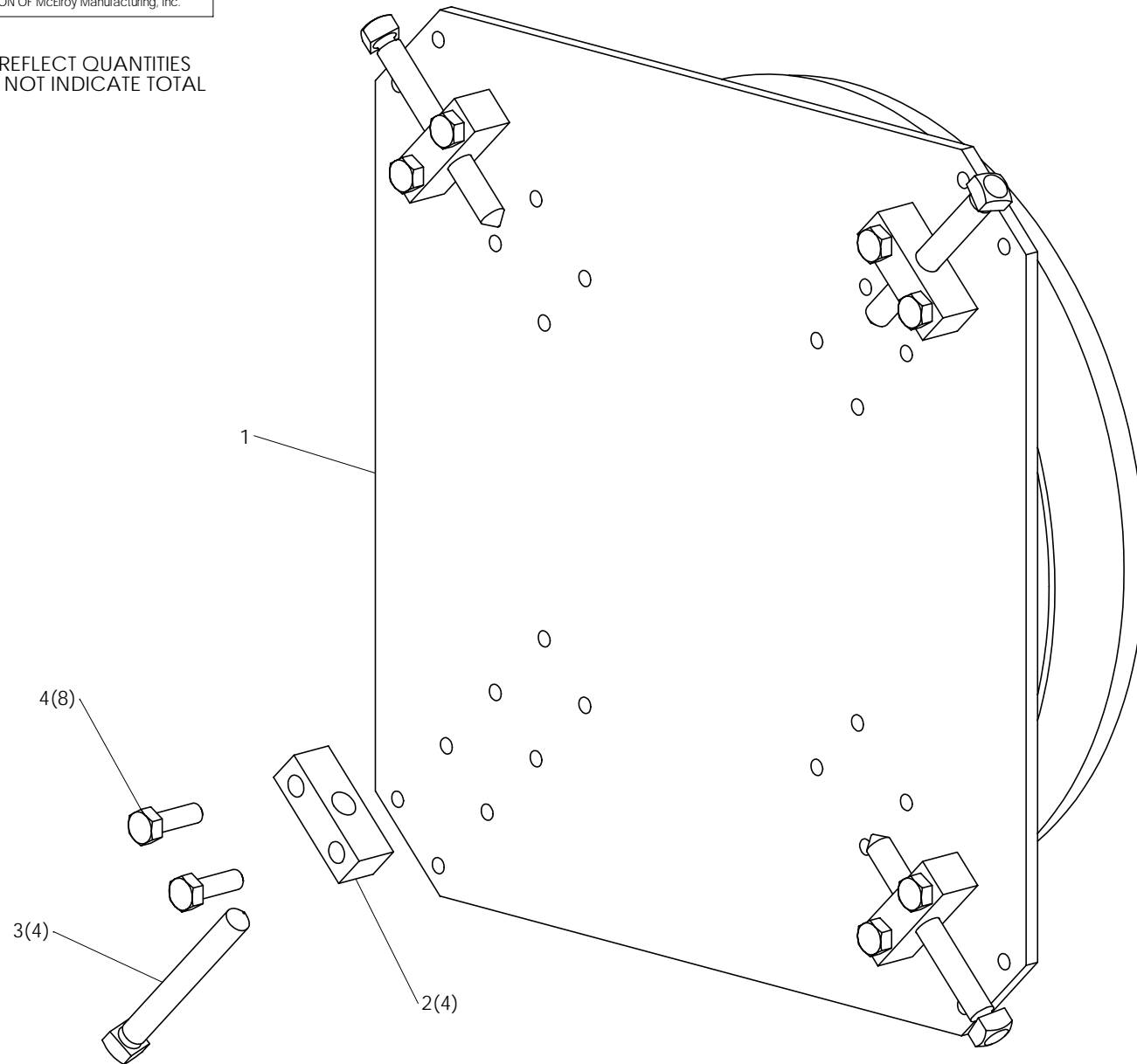
PART No: 1214601

412 STUB END HOLDER ASSEMBLY

NOTE: THIS DRAWING AND THE INFORMATION CONTAINED THEREIN IS THE CONFIDENTIAL AND PROPRIETARY PROPERTY OF McElroy Manufacturing, Inc. THE DRAWING IS NOT TO BE REPRODUCED IN ANY MANNER, SUBMITTED TO OUTSIDE PARTIES FOR EXAMINATION, OR USED DIRECTLY OR INDIRECTLY FOR THE PURPOSES OTHER THAN THOSE FOR WHICH IT WAS FURNISHED WITHOUT WRITTEN PERMISSION OF McElroy Manufacturing, Inc.

NOTES:

1. ITEMS SHOWN IN PARENTHESIS REFLECT QUANTITIES IN A LOCAL GROUP AND MAY NOT INDICATE TOTAL ASSEMBLY QUANTITIES.



#412 STUB END HOLDER ASSEMBLYParts List

ITEM	PART NO.	QTY.	DESCRIPTION
	1214601		ASSEMBLY
1	1214603	1	STUB END HOLDER
2	805401	4	STUB END HOLDER CLAMP BLOCK
3	805703	4	STUB END HOLDER ADJUSTMENT SCREW
4	MAB00033	8	5/16-18NC x 1" LG HHCS

DRAWING REVISION HISTORY LISTING

PART NO 1214601
DESCRIPTION: #412 STUB END HOLDER ASSEMBLY

<u>APPR.</u>	<u>REV</u>	<u>DATE</u>	<u>BY</u>	<u>DESCRIPTION OF REVISION</u>
TLW	K	10/30/00	RLE	REVISED & REDRAWN FROM "D" SIZE DRAWING TO "A" SIZE FORMAT CREATED NEW DRAWING FOR WELD DETAIL & DIMENSIONS SEE 1214600 SHEET 2 & CREATED NEW DRAWING FOR MACHINE DETAIL & DIMENSIONS SEE 1214600 SHEET 3 & CREATED NEW DRAWING FOR ITEM -c SEE 1214600 SHEET 4.
SWB	L	9/14/01	RLE	ADDED SIDE VIEW OF CLAMP BLOCK.
SWB	M	08/29/05	BWW	CREATED EXPLODED ISOMETRC VIEW AND ADDED NOTE 1 FOR CLARITY. REMOVED PARTS FROM DRAWING AND CREATED SEPARATE PARTS LIST.