



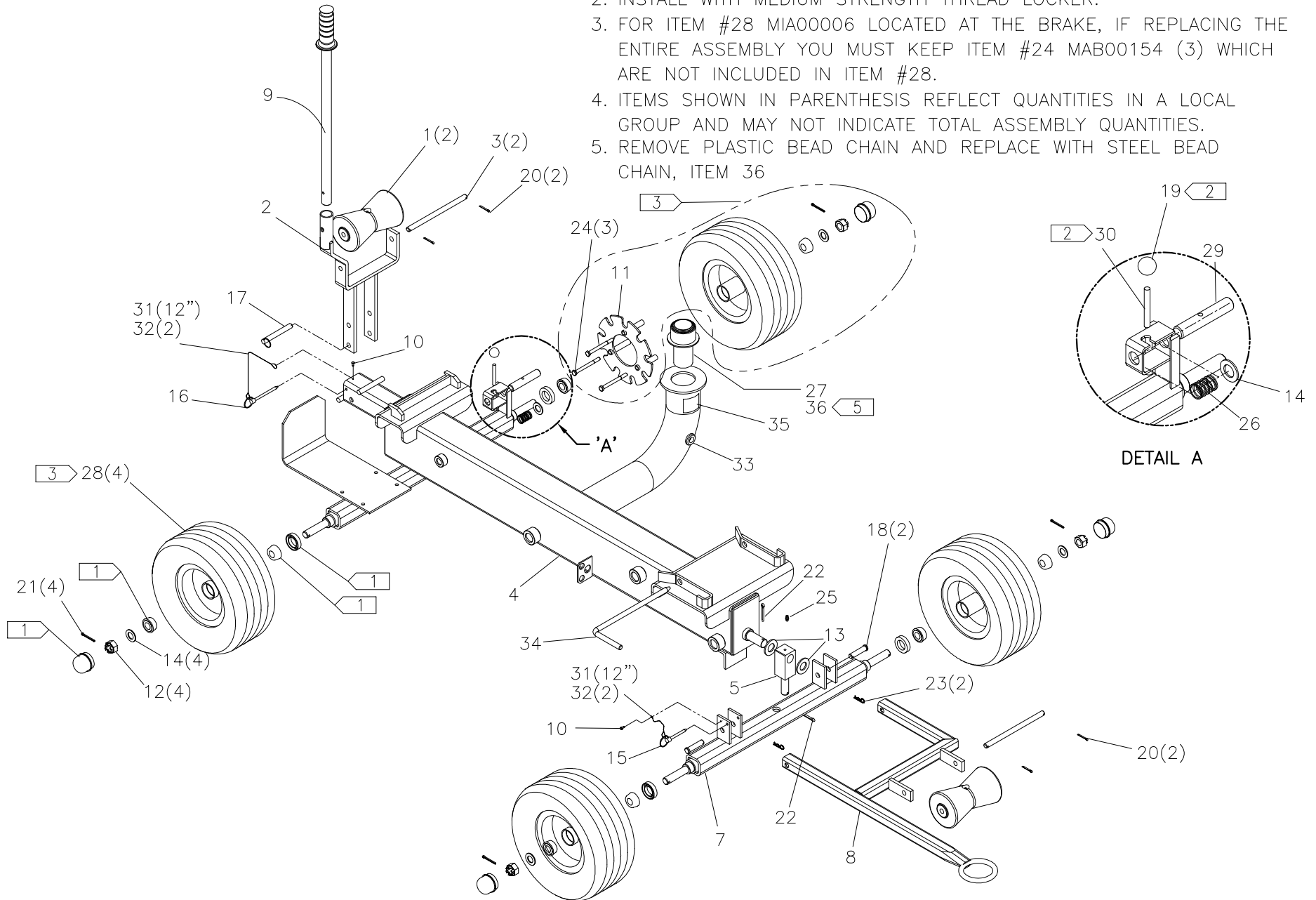
McElroy Manufacturing, Inc.
 The leader by design.
 Tulsa, Oklahoma U.S.A.

DRAWN: ALK	CHECK: BLM	APPRV'D: JRP	DATE: 7/14/03	DWG No: 861200	SHT No: 1	REV No: G	PART No: 861201
#28 ROLLING CHASSIS ASSEMBLY							CAD No: 861201

NOTE: THIS DRAWING AND THE INFORMATION CONTAINED THEREIN IS THE CONFIDENTIAL AND PROPRIETARY PROPERTY OF McElroy Manufacturing, Inc. THE DRAWING IS NOT TO BE REPRODUCED IN ANY MANNER, SUBMITTED OUTSIDE PARTIES FOR EXAMINATION, OR USED DIRECTLY OR INDIRECTLY FOR THE PURPOSES OTHER THAN THOSE FOR WHICH IT WAS FURNISHED WITHOUT WRITTEN PERMISSION OF McElroy Manufacturing, Inc.

NOTES:

1. ITEM #28 MIA00006 CONTAINS: (1) MIB00007 GREASE CAP, (1) MDL00121 AND (2) MDM000125 BEARINGS, THESE PARTS MAY BE ORDERED SEPARATELY.
2. INSTALL WITH MEDIUM STRENGTH THREAD LOCKER.
3. FOR ITEM #28 MIA00006 LOCATED AT THE BRAKE, IF REPLACING THE ENTIRE ASSEMBLY YOU MUST KEEP ITEM #24 MAB00154 (3) WHICH ARE NOT INCLUDED IN ITEM #28.
4. ITEMS SHOWN IN PARENTHESIS REFLECT QUANTITIES IN A LOCAL GROUP AND MAY NOT INDICATE TOTAL ASSEMBLY QUANTITIES.
5. REMOVE PLASTIC BEAD CHAIN AND REPLACE WITH STEEL BEAD CHAIN, ITEM 36



#28 ROLLING CHASSIS ASSEMBLY

PARTS LIST

ITEM	PART NO.	QTY	DESCRIPTION
	861201		ASSEMBLY
1	802104	2	PIPE LIFT ROLLER W/ZERK
2	861901	1	PIPE LIFT ROLLER SUPPORT WELDMENT
3	812801	2	ROLLER SHAFT
4	861301	1	CHASSIS
5	813305	1	PIVOT BLOCK
6			
7	813502	1	FRONT AXLE WELDMENT
8	862001	1	TOW BAR WELDMENT
9	402801	1	LEVER ASSEMBLY
10	MAH00140	2	#6-32 NC X 1/4" LG. HEX WASHER HEAD TYPE 'F' THREAD FORMING SCREW
11	862201	1	BRAKE PLATE WELDMENT
12	MBD00032	4	3/4-16 NF CASTLE NUT
13	MBF00013	2	7/8" TYPE 'A' NARROW SAE FLAT WASHER
14	MBG00004	5	3/4" TYPE 'AN' FLAT WASHER
15	MCE00002	1	1/4" DIA X 2.00" GRIP DETENT PIN
16	MCE00003	1	1/4" DIA X 3.00" GRIP DETENT PIN
17	MCE00015	1	1/2" DIA X 3.50" GRIP DETENT PIN
18	MCF00007	2	1/2" DIA X 2-9/32" GRIP CLEVIS PIN
19	MJJ00029	1	RED BALL KNOB
20	MCH00001	4	1/8" DIA. X 1" LG. COTTER PIN
21	MCH00002	4	1/8" DIA. X 1-1/2" LG. COTTER PIN
22	MCH00003	2	3/16" DIA X 1-1/2 LG COTTER PIN
23	MCH00015	2	3/8" DIA X 1-7/8" LG HAIR PIN
24	MAB00159	3	5-16-24NC X 3 1/2 LG. HHCS
25	MFJ00001	1	GREASE ZERK
26	MJE00028	1	COMPRESSION SPRING
27	MFK00004	1	FILLER CAP
28	MIA00006	4	WHEEL AND TIRE ASSEMBLY W/ BEARING, SEAL & CAP.
29	1871601	1	BRAKE PLUNGER
30	MJJ00028	1	HANDLE SHAFT
31	MJQ00025	2FT	COATED CABLE
32	MJQ00026	4	FERRULE
33	MFJ00013	1	OIL EYE LENSE & O-RING
34	T1203201	1	CARRIAGE LOCK BAR
35	8163106	1	HYDRAULIC OIL SPECIFICATION LABEL
36	MJQ00411	4IN	3/16" STEEL BEAD CHAIN

DRAWING REVISION HISTORY LISTING

PART NO: 861201

DESCRIPTION: #28 ROLLING CHASSIS ASSEMBLY

<u>APPR.</u>	<u>REV</u>	<u>DATE</u>	<u>BY</u>	<u>DESCRIPTION OF REVISION</u>
BLM	A	9/24/03	ALK	REVISED TO ADD ITEM #34 T5027401 HYDRAULIC OIL NOTICE LABEL.
BLM	B	9/30/03	ALK	REVISED TO REMOVE LABEL ADDED IN LAST REVISION. LABEL MATERIAL IS TOO STIFF, WILL NOT CURVE AROUND FILL SPOUT.
SWB	C	05/17/04	LBK	PARTS 813304 & 813401 WERE JOINED TO FORM (1) PART 813305, AND ITEM 19 MCG00007 WAS REMOVED.
SWB	D	06/09/04	MLM	REVISED TO ADD ITEM-34 (T1203201) TO BE CONSISTANT WITH OTHER PRODUCTS.
BLM	E	10/25/04	MLM	REVISED TO CHANGE ITEM 11 FROM 862101 TO 862201, ITEM 26 FROM MJJ00024 TO MJE00028, ITEM 29 FROM MBB00011 TO 1871601 AND ITEM 30 FROM MJN00005 TO MJJ00028. REMOVED NOTE 2 & RENUMBERED NOTE 3 TO NOTE 2. ADDED ITEM 19 MJJ00029. CHANGED QTY OF ITEM 14 MBG00004 FROM 4 TO 5. CHANGES MADE FOR NEW BRAKE DESIGN. ADDED ITEM 35 8163106 HYDRAULIC OIL SPECIFICATION LABEL
SWB	F	08/25/05	BWW	ADDED ITEM QUANTITIES AND MOVED NOTES TO FACE OF DRAWING AND ADDED NOTES 3 AND 4 FOR PARTS FINDER PROJECT.
BLM	G	09/26/06	ARB	ADDED ITEM 36 MJQ00411 AND NOTE '5' TO REPLACE PLASTIC BEAD CHAIN INCLUDED WITH ITEM 27 'FILLER CAP' TO INCREASE DURABILITY