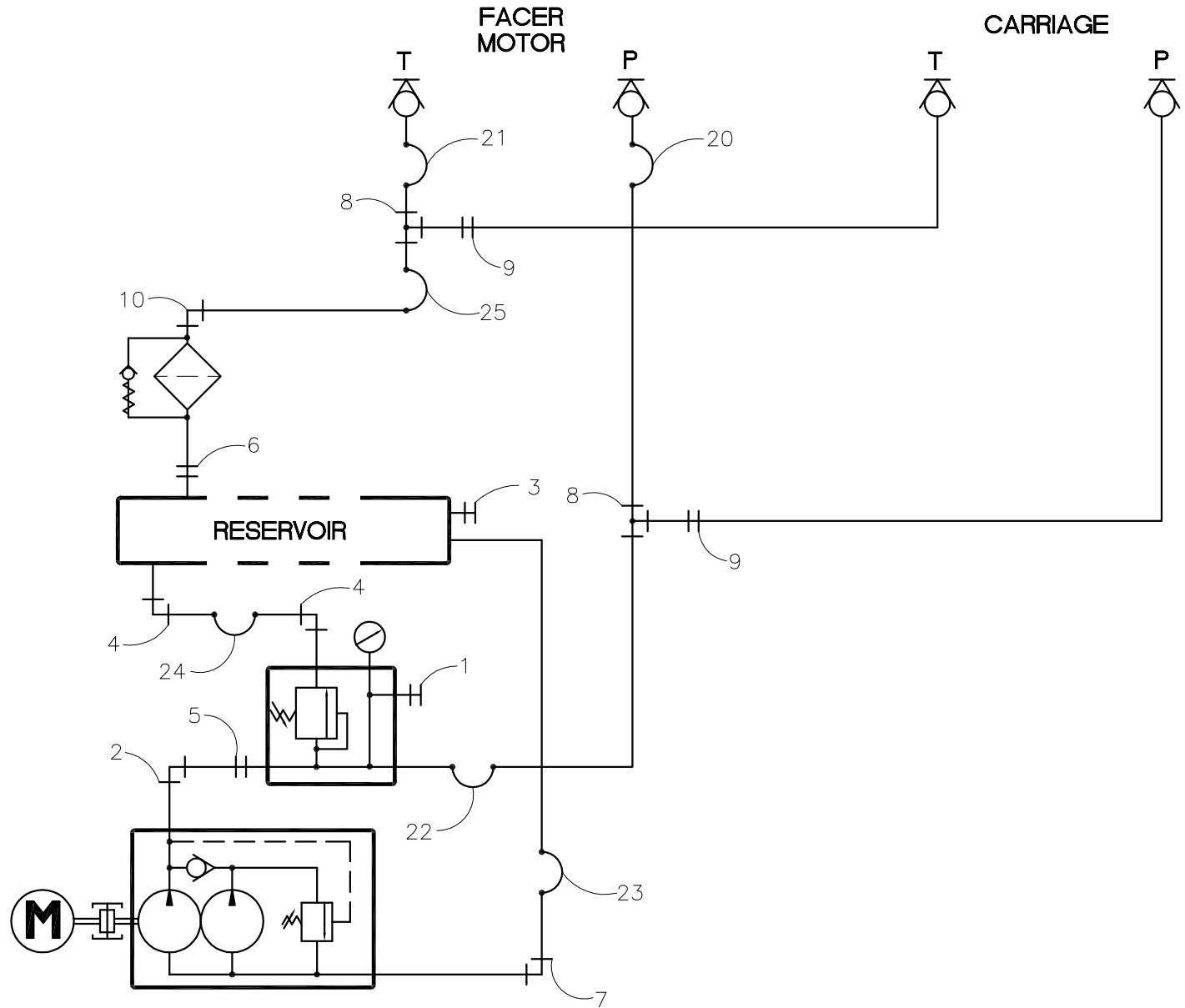




McElroy Manufacturing, Inc.
 The leader by design.
 Tulsa, Oklahoma U.S.A.

DRAWN: ALK	CHECK: BLM	APPRV'D: JRP	DATE: 12/6/02	DWG No: 861000	SHT No: 1	REV No: D	PART No: 861001
#28 PLUMBING SCHEMATIC							CAD No: 861001

NOTE: THIS DRAWING AND THE INFORMATION CONTAINED THEREIN IS THE CONFIDENTIAL AND PROPRIETARY PROPERTY OF McElroy Manufacturing, Inc. THE DRAWING IS NOT TO BE REPRODUCED IN ANY MANNER, SUBMITTED TO OUTSIDE PARTIES FOR EXAMINATION, OR USED DIRECTLY OR INDIRECTLY FOR THE PURPOSES OTHER THAN THOSE FOR WHICH IT WAS FURNISHED WITHOUT WRITTEN PERMISSION OF McElroy Manufacturing, Inc.



#28 PLUMBING SCHEMATICParts List

ITEM	PART NO.	QTY.	DESCRIPTION
	A861002		#28 FITTING KIT
1	MFA00007	1	4MPT PLUG
2	MFA00022	1	8MPT/8FPT ELBOW
3	MFC00085	1	12MSAE PLUG
4	MFQ00012	2	8MSL/8MSAE ELBOW
5	MFC00062	1	8MSAE/8MPT ADAPTER
6	MFC00119	1	12MSAE/12MSAE ADAPTER
7	MFQ00053	1	12MPT/12MSL ELBOW
8	MFQ00054	2	6MSL/6MSL/6MSL BULKHEAD TEE
9	MFQ00008	2	6FSL/6MSAE SWIVEL ADAPTER
10	MFQ00060	1	8MSL/12MSAE ELBOW
	A861001		#28 HOSE KIT
20	SLBEDJE056	1	HOSE ASSEMBLY OAL 56"
21	SLBDDJE058	1	HOSE ASSEMBLY OAL 58"
22	SLBBDJE011	1	HOSE ASSEMBLY OAL 11"
23	SLMBGJG014	1	HOSE ASSEMBLY OAL 14"
24	SLCBEBE009	1	HOSE ASSEMBLY OAL 9"
25	SLCBEDD013	1	HOSE ASSEMBLY OAL 13"

DRAWING REVISION HISTORY LISTING

PART NO: 861001

DESCRIPTION: #28 PLUMBING SCHEMATIC

<u>APPR.</u>	<u>REV</u>	<u>DATE</u>	<u>BY</u>	<u>DESCRIPTION OF REVISION</u>
BLM	A	7/7/03	ALK	MOVED HOSE CALLOUTS TO SEPARATE PARTS LIST A861001. ADDED MFC00060 AS ITEM #10. REVISED ITEM #6 FROM MFC00004 TO MFC00119.
BLM	B	7/21/03	ALK	REVISED PARTS LIST TO SHOW A861002 #28 FITTING KIT, MOVED A861001 #28 HOSE KIT TO SAME SHEET.
BLM	C	10/14/03	ALK	REVISED TO REDUCE QUANTITY OF ITEM #20 SLBEDJE056 FROM 2 TO 1 TO MATCH AS BUILT.
BLM	D	06/15/04	BWW	REVISED QTY OF ITEM 3 FROM 2 TO 1 TO MATCH AS BUILT CONDITION.