

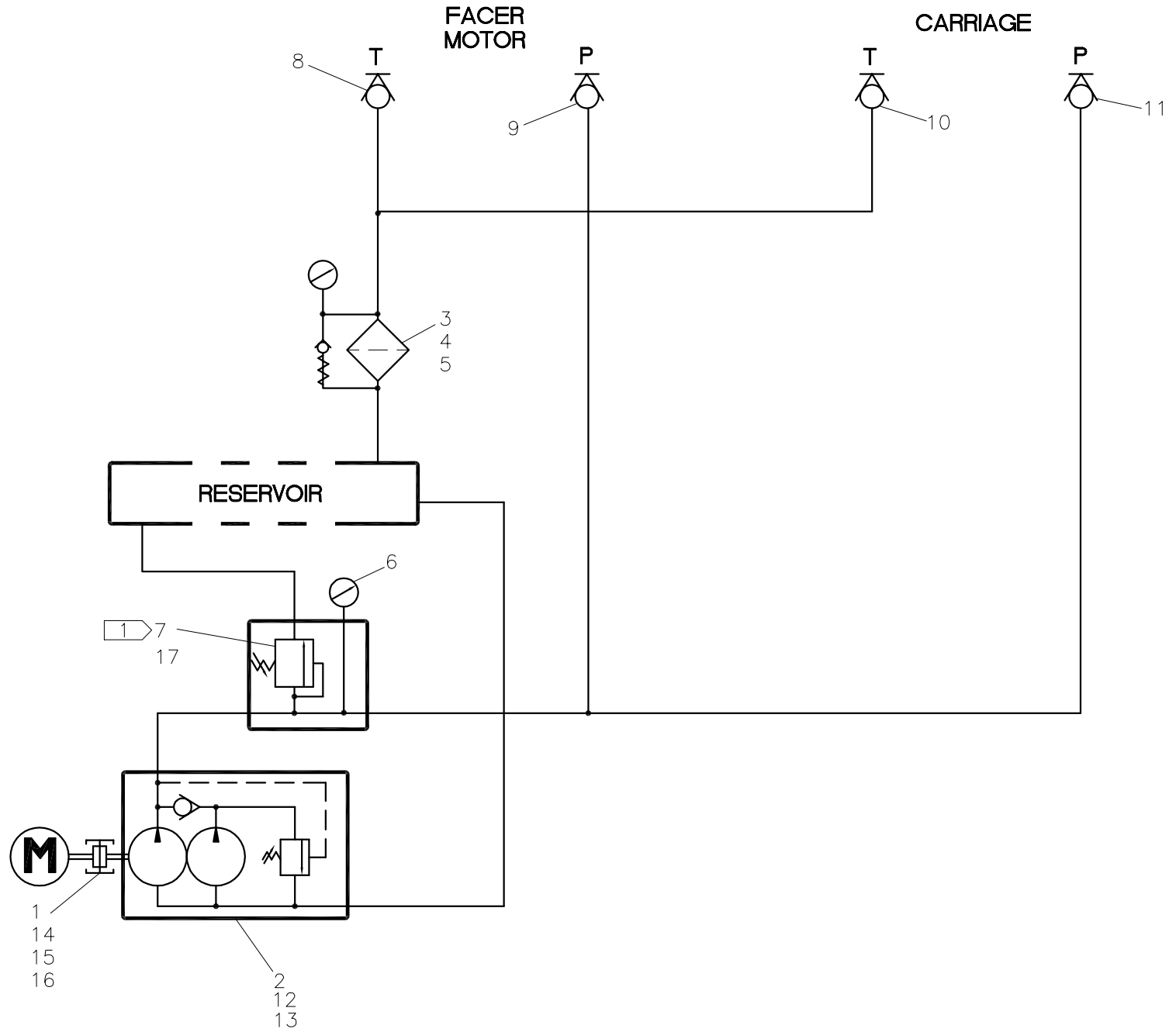


McElroy Manufacturing, Inc.
 The leader by design.
 Tulsa, Oklahoma U.S.A.

DRAWN: ALK	CHECK: BLM	APPRV'D: JRP	DATE: 12/6/02	DWG No: 860900	SHT No: 1	REV No: A	PART No: 860901
#28 HYDRAULIC SCHEMATIC							CAD No: 860901

NOTE: THIS DRAWING AND THE INFORMATION CONTAINED THEREIN IS THE CONFIDENTIAL AND PROPRIETARY PROPERTY OF McElroy Manufacturing, Inc. THE DRAWING IS NOT TO BE REPRODUCED IN ANY MANNER, SUBMITTED TO OUTSIDE PARTIES FOR EXAMINATION, OR USED DIRECTLY OR INDIRECTLY FOR THE PURPOSES OTHER THAN THOSE FOR WHICH IT WAS FURNISHED WITHOUT WRITTEN PERMISSION OF McElroy Manufacturing, Inc.

NOTES:
 1. DO NOT ADJUST VALVE BELOW 500psi. IT WILL OVERLOAD THE PUMP MOTOR.



#28 HYDRAULIC SCHEMATICParts List

ITEM	PART NO.	QTY.	DESCRIPTION
	860901		ASSEMBLY
1	MEA00002	1	PUMP ADAPTER
2	MEA00052	1	PUMP
3	MED00056	1	FILTER HEAD
4	MED00051	1	FILTER ELEMENT
5	MEE00021	1	PRESSURE GAUGE
6	MEE00005	1	1500PSI/BAR PRESSURE GAUGE
7	MEH00007	1	RELIEF VALVE
8	MFH00045	1	1/2 FSAE QUICK DISCONNECT COUPLER
9	MFH00046	1	1/2 FSAE QUICK DISCONNECT NIPPLE
10	MFH00043	1	3/8 FSAE QUICK DISCONNECT COUPLER
11	MFH00044	1	3/8 FSAE QUICK DISCONNECT NIPPLE
12	MAB00048	2	5/16-18NC x 5 1/2 LG. HHCS
13	MBE00006	2	5/16 REGULAR SPLIT LOCK WASHER
14	MAB00065	4	3/8-16NC x 1 1/4 LG. HHCS
15	MBE00007	4	3/8 REGULAR SPLIT LOCK WASHER
16	MDJ00005	1	5/8 x .439, .095 KEY COUPLING ASSEMBLY
17	816309	1	LABEL

DRAWING REVISION HISTORY LISTING

PART NO: 860901

DESCRIPTION: #28 HYDRAULIC SCHEMATIC

<u>APPR.</u>	<u>REV</u>	<u>DATE</u>	<u>BY</u>	<u>DESCRIPTION OF REVISION</u>
BLM	----	7/7/03	ALK	REVISED ITEM #3 FROM MED00055 TO MED00056 FOR CONSISTENCY BETWEEN MACHINES.
SWB	A	10/26/05	BWW	MOVED NOTE TO FACE OF DRAWING FOR CLARITY AND REMOVED NOTE 2 FOR ADDING EXTRA ADHESIVE TO LABEL WHICH IS NOT NECESSARY.