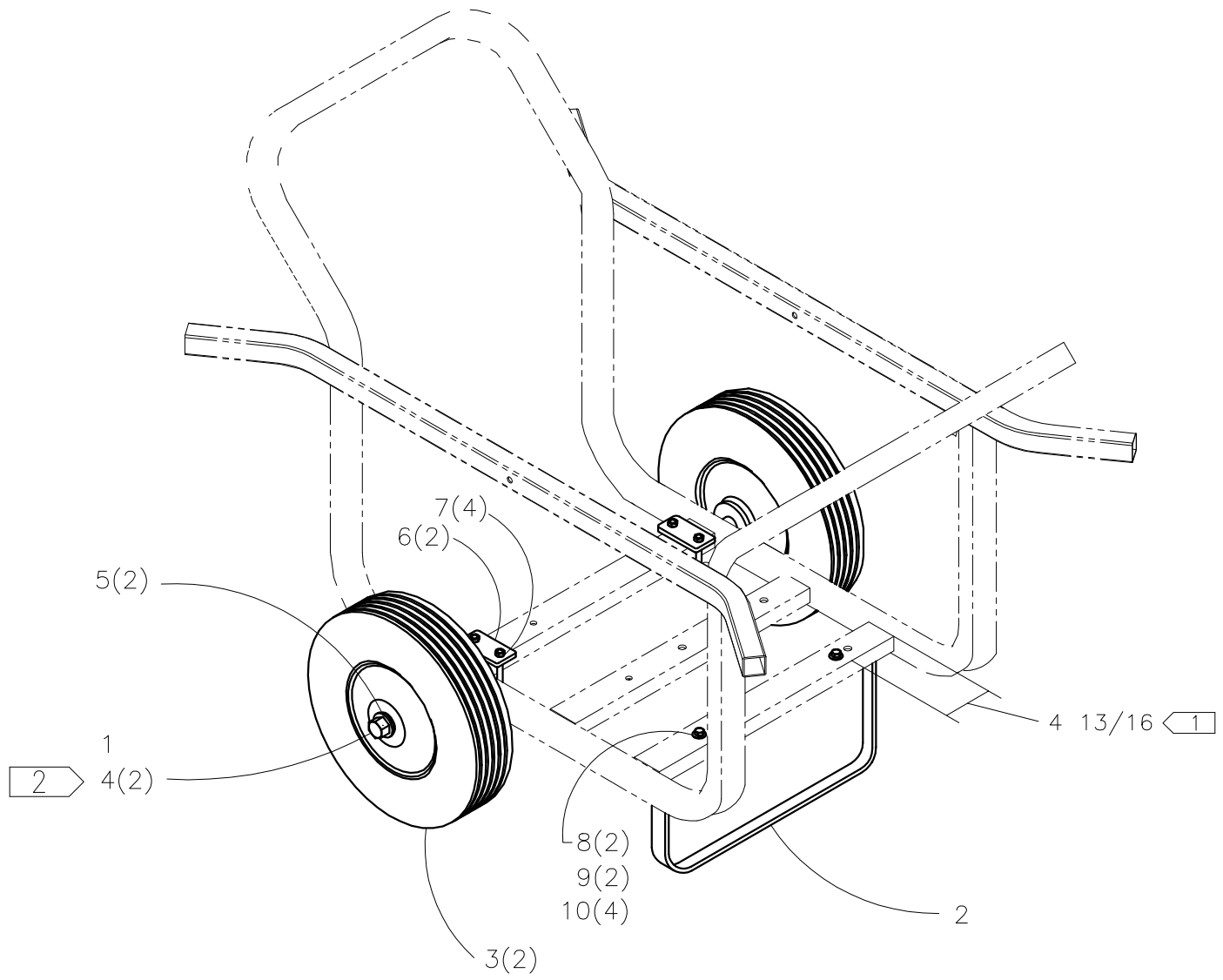




McElroy Manufacturing, Inc.
The leader by design.
Tulsa, Oklahoma U.S.A.

DRAWN: AH	CHECK: WAB	APPRV'D: SWB	DATE: 4/11/97	DWG No: 850800	SHT No: 1	REV No: C	PART No: 850801
Mc28 Pit Bull™ HPU WHEEL KIT							CAD No: 850801

NOTE: THIS DRAWING AND THE INFORMATION CONTAINED THEREIN IS THE CONFIDENTIAL AND PROPRIETARY PROPERTY OF McElroy Manufacturing, Inc. THE DRAWING IS NOT TO BE REPRODUCED IN ANY MANNER, SUBMITTED OUTSIDE PARTIES FOR EXAMINATION, OR USED DIRECTLY OR INDIRECTLY FOR THE PURPOSES OTHER THAN THOSE FOR WHICH IT WAS FURNISHED WITHOUT WRITTEN PERMISSION OF McElroy Manufacturing, Inc.



Mc28 Pit Bull™ HPU WHEEL KITParts List

ITEM	PART NO.	QTY.	DESCRIPTION
	850801		KIT
1	850802	1	Mc28 Pit Bull HPU WHEEL KIT AXLE WELDMENT
2	850803	1	Mc28 Pit Bull HPU WHEEL KIT LEG
3	MIA00001	2	WHEEL ASSY.
4	MAB00063	2	3/8-16NC X 3/4" LG. HHCS
5	MBF00007	2	3/8" X 1-1/8" OD FLAT WASHER PL
6	MAH00166	2	U-BOLT w/NUTS & MTG. PLATE
7	MBE00006	4	5/16" REG. SPLIT LOCK WASHER STL PL
8	MAB00034	2	5/16-18NC X 1 1/4" LG. HHCS
9	MBC00006	2	5/16-18NC FINISHED HEX NYLON LOCK NUT STL PL
10	MBF00006	4	5/16" TYPE "A" WIDE FLAT WASHER STL PL

NOTES:

1. IF NO HOLES EXIST, USE ITEM 2 (#850803) AS A TEMPLATE TO MARK AND DRILL THROUGH (2) PLACES 7/16" DIAMETER IN CHANNEL ON PIT BULL HPU FRAME. PLACE FIRST HOLE AT DIMENSION SHOWN.
2. INSTALL WITH THREAD LOCKING COMPOUND

DRAWING REVISION HISTORY LISTING

PART NO: 850801

DESCRIPTION: Mc28 PIT BULL™ HPU WHEEL KIT

<u>APPR.</u>	<u>REV</u>	<u>DATE</u>	<u>BY</u>	<u>DESCRIPTION OF REVISION</u>
SWB	A	04/12/97	WAB	CHANGED DESCRIPTION OF 850803 FROM HANDLE TO LEG.
SWB	B	04/21/97	WAB	REPLACED MAA00065 WITH MAA00034.
TLW	C	07/19/00	PB	REVISED ITEM #4 MAH00007 3/8-16 N.C. SHCS TO MAB00063 3/8-16 N.C. HHCS TO MATCH AS BUILT CONDITION. ADDED NOTE 2, INSTALL WITH THREAD LOCKING COMPOUND.