



McElroy Manufacturing, Inc.

The leader by design.

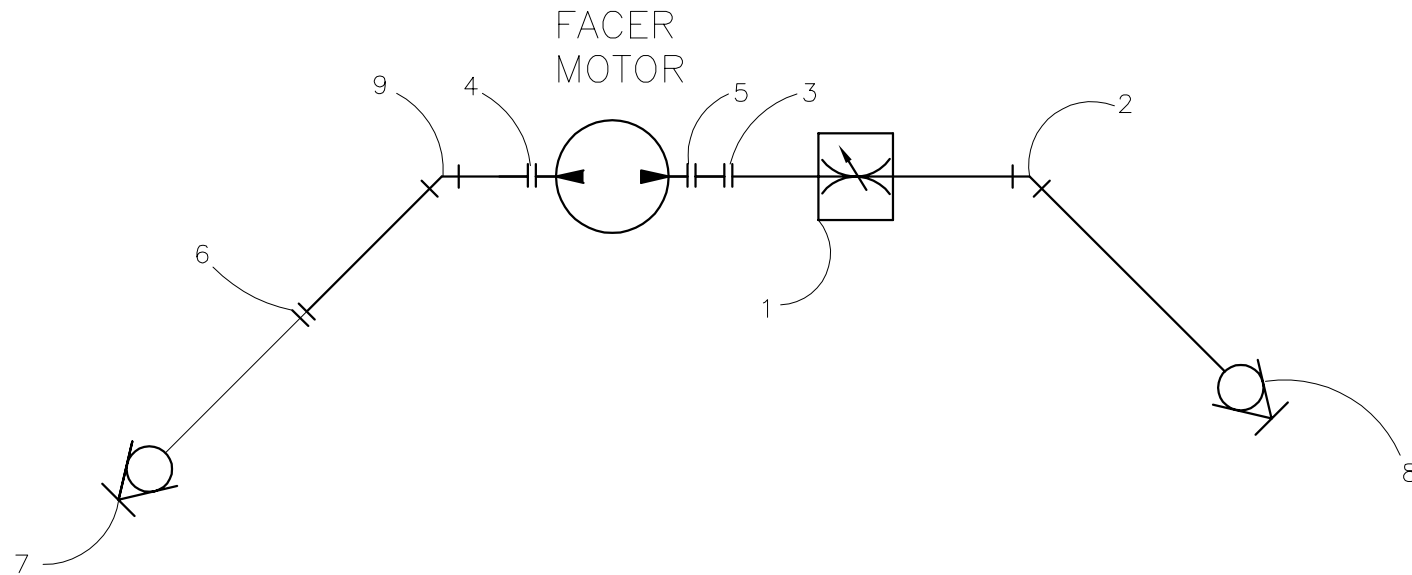
Tulsa, Oklahoma U.S.A.

DRAWN: DWP CHECK: SWB APPRV'D: B DATE: 4/23/96 DWG No: 842400 SHT No: 3 REV No: C PART No: 842403

Mc28 Pit Bull FACER HYDRAULIC/PLUMBING SCHEMATIC

CAD No: 842403

NOTE: THIS DRAWING AND THE INFORMATION CONTAINED THEREIN IS THE CONFIDENTIAL AND PROPRIETARY PROPERTY OF McElroy Manufacturing, Inc. THE DRAWING IS NOT TO BE REPRODUCED IN ANY MANNER, SUBMITTED OUTSIDE PARTIES FOR EXAMINATION, OR USED DIRECTLY OR INDIRECTLY FOR THE PURPOSES OTHER THAN THOSE FOR WHICH IT WAS FURNISHED WITHOUT WRITTEN PERMISSION OF McElroy Manufacturing, Inc.



Mc28 Pit Bull FACER HYDRAULIC/PLUMBING SCHEMATICParts List

ITEM	PART NO.	QTY.	DESCRIPTION
	842403		ASSEMBLY
1	MEI00011	1	BALL VALVE
2	MFA00186	1	4MPT/4MPT 45DEG ADAPTER
3	MFA00192	1	4MPT/4MPT HEX NIPPLE
4	MFC00102	1	10MSAE/6MJIC ADAPTER
5	MFA00195	1	10MSAE/4FPT ADAPTER
6	MFB00109	1	4MPT/6FSJIC ADAPTER
7	MFH00002	1	1/4FNPT QUICK DISC NIPPLE
8	MFH00001	1	1/4FNPT QUICK DISC COUPLER
9	MFB00191	1	6MJIC/6FSJIC 45 ELBOW

DRAWING REVISION HISTORY LISTING

PART NO: 842403

DESCRIPTION: Mc 28 Pit Bull FACER HYDRAULIC/PLUMBING SCHEMATIC

<u>APPR.</u>	<u>REV</u>	<u>DATE</u>	<u>BY</u>	<u>DESCRIPTION OF REVISION</u>
SWB	A	8/21/98	DJL	REMOVED ITEM 3 MFC00005 (4FPT/6MSAE ADAPTER). CHANGED ITEM 6 MFC00084 TO MFB00109 ADAPTER. REPLACED ITEMS 7 & 8 MFH00035 & 36 FLUSH FACED QUICK DISCONNECTS WITH MFH00001 & 2 NIPPLE STYLE QUICK DISCONNECTS.
LAF	B	05/5/99	AH	REVISED SCHEMATIC FOR NEW HYDRAULIC MOTOR MEC00021. ADDED ITEM #3(MFA00192) QTY 1. DELETED ITEM #4(MFC00022) ADDED ITEM #4(MFC00102) QTY 1. DELETED ITEM #5(MFC00083) ADDED ITEM #5(MFA00195) QTY 1. ADDED ITEM #9(MFB00191) QTY 1.
LAA	C	01/28/03	BWW	CORRECTED PICTORIALY ITEM 2 AND 9 TO MORE CLEARLY COMMUNICATE ASSEMBLY INSTRUCTIONS.