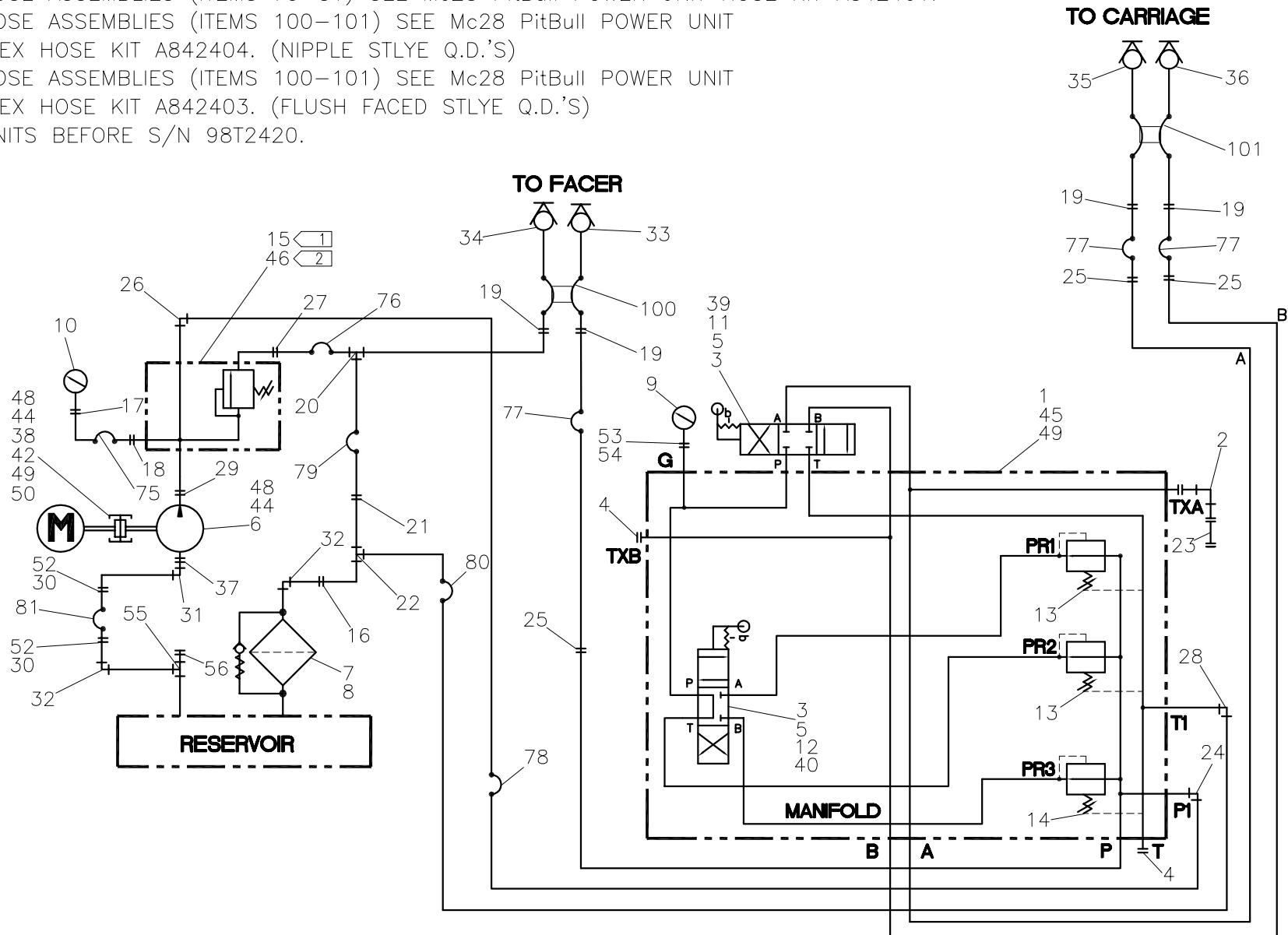




NOTE: THIS DRAWING AND THE INFORMATION CONTAINED THEREIN IS THE CONFIDENTIAL AND PROPRIETARY PROPERTY OF McElroy Manufacturing, Inc. THE DRAWING IS NOT TO BE REPRODUCED IN ANY MANNER, SUBMITTED OUTSIDE PARTIES FOR EXAMINATION, OR USED DIRECTLY OR INDIRECTLY FOR THE PURPOSES OTHER THAN THOSE FOR WHICH IT WAS FURNISHED WITHOUT WRITTEN PERMISSION OF McElroy Manufacturing, Inc.

NOTES:

1. DO NOT ADJUST THIS VALVE BELOW 500 PSI. IT WILL OVERLOAD THE PUMP MOTOR.
2. ATTACH WITH MEDIUM STRENGTH THREAD LOCKER.
3. FOR HOSE ASSEMBLIES (ITEMS 75-81) SEE Mc28 PitBull POWER UNIT HOSE KIT A842401.
4. FOR HOSE ASSEMBLIES (ITEMS 100-101) SEE Mc28 PitBull POWER UNIT PARAFLEX HOSE KIT A842404. (NIPPLE STLYE Q.D.'S)
5. FOR HOSE ASSEMBLIES (ITEMS 100-101) SEE Mc28 PitBull POWER UNIT PARAFLEX HOSE KIT A842403. (FLUSH FACED STLYE Q.D.'S)
 FOR UNITS BEFORE S/N 98T2420.



**Mc28 Pit Bull® POWER UNIT
HYDRAULIC / PLUMBING SCHEMATIC**

Parts List

ITEM	PART NO.	QTY.	DESCRIPTION
	842401		ASSEMBLY
1	1814002	1	CARRIAGE MANIFOLD ASSEMBLY
2	MFC00113	1	6MSAE/6FSAE ELBOW
3	MAC00040	8	10-24NC X 1"LG SHCS
4	MFC00004	2	6MSAE PLUG
5	MBE00004	8	#10 REGULAR SPLIT LOCK WASHER
6	MEA00052	1	PUMP
7	MED00014	1	FILTER HEAD
8	MED00017	1	FILTER ELEMENT
9	MEE00004	1	PRESSURE GAUGE
10	MEE00005	1	PRESSURE GAUGE
11	MEF00013	1	DIRECTIONAL VALVE
12	MEF00014	1	DIRECTIONAL VALVE
13	MEG00001	2	REDUCING VALVE
14	MEG00002	1	REDUCING VALVE
15	MEH00007	1	RELIEF VALVE
16	MFA00031	1	12MPT/8FPT REDUCER
17	MFB00003	1	4MPT/4MJIC ADAPTER
18	MFB00005	1	4MPT/4MJIC ELBOW
19	MFB00014	4	6MJIC/6MJIC ADAPTER
20	MFB00018	1	6MJIC/6MJIC/6FSJIC TEE
21	MFB00074	1	6MJIC REDUCER
22	MFB00147	1	8MPT/8MJIC/8MJIC TEE
23	MFH00048	1	3/8SAE QUICK DISCONNECT NIPPLE
24	MFC00003	1	6MSAE/6MJIC ELBOW
25	MFC00002	3	6MSAE/6MJIC ADAPTER
26	MFC00024	1	8MSAE/6MJIC ELBOW
27	MFC00027	1	8MSAE/6MJIC ADAPTER
28	MFC00028	1	6MSAE/8MJIC ELBOW
29	MFC00062	1	8MSAE/8MPT ADAPTER
30	MFD00002	2	HOSE CLAMP
31	MFD00021	1	3/4"NPT ELBOW
32	MFD00022	2	3/4"NPT STREET ELBOW
33	MFH00002	1	1/4FNPT QUICK DISC NIPPLE
34	MFH00001	1	1/4FNPT QUICK DISC COUPLER
35	MFH00004	1	3/8FNPT QUICK DISC NIPPLE
36	MFH00003	1	3/8FNPT QUICK DISC COUPLER
37	MFI00044	1	3/4"NPT X 3"LG NIPPLE
38	MEA00002	1	PUMP ADAPTER

**Mc28 Pit Bull® POWER UNIT
HYDRAULIC / PLUMBING SCHEMATIC**

Parts List

ITEM	PART NO.	QTY.	DESCRIPTION
39	8163104	1	CARRIAGE OPEN/CLOSE LABEL
40	8163105	1	SELECTOR VALVE LABEL
41			
42	MAA00065	4	3/8-16NC X 1-1/4"LG HHCS
43			
44	MAA00048	2	5/16-18NC X 5-1/2"LG HHCS
45	MAN00009	2	3/8-16NC X 1" LG SHCS SS
46	816309	1	LABEL
47			
48	MBE00006	2	5/16" REGULAR SPLIT LOCK WASHER
49	MBE00007	6	3/8" REGULAR SPLIT LOCK WASHER
50	MDJ00005	1	COUPLING ASSEMBLY
51			
52	MFD00047	2	3/4MPT X 3/4 HOSE END BARB
53	MFA00011	1	4FPT/4FPT ELBOW
54	MFI00011	1	1/4"NPT X 3"LG XHS NIPPLE
55	MFD00023	1	3/4"NPT TEE
56	MFD00075	1	3/4"NPT HOLLOW HEX PLUG

DRAWING REVISION HISTORY LISTING

PART NO: 842401
DESCRIPTION: Mc28 Pit Bull® POWER UNIT HYDRAULIC/PLUMBING SCHEMATIC

<u>APPR</u>	<u>REV</u>	<u>DATE</u>	<u>BY</u>	<u>DESCRIPTION OF REVISION</u>
SWB	A	9/19/96	SWB	CHANGED HYD PUMP FROM MEA00034 (WHICH IS NO LONGER AVAILABLE) TO MEA00052. DIFFERENCE IN HOUSING THICKNESS CAUSED 5/16" MOUNTING BOLTS TO CHANGE FROM 6" LG (MAA00049) TO 5-1/2" LG (MAA00048).
DWP	B	10/25/96	SWB	CHANGED QTY OF ITEM #31 MFD00021 FROM 2 TO 1. ADDED ITEMS #55 & #56 TO ADD THE FILTER BUGGY FOR CLEANING. ADDED ITEMS #43 & 47 TO SCHEMATIC TO SHOW O-RING LOCATIONS, CHANGED ITEM #28 (TO CARRIAGE) & ITEM #24 TO ITEM #25. CHANGED QTY OF ITEM #24 MFC00003 FROM 2 TO 1. ADDED MFC00002 TO ITEM #25 BLANK. CHANGED QTY OF ITEM #28 MFC00028 FROM 2 TO 1.
SWB	C	12/06/96	SS	CHANGED ITEM #30 MFD00017 TO MFD00002. THE MFD0017 CLAMP HAS BEEN PURCHASED IN 2 DIFFERENT SIZES. WE NOW BUY THE LARGER SIZE ONLY SINCE THE SMALLER WILL NOT FIT THE 12" & 18" MACHINES. A SMALLER CLAMP MFD0002 IS REQUIRED ON THE PitBull.
SWB	D	8/11/97	BB	CHANGED ITEM #1 FROM A1814001 TO 1814002 #28, #412 & #618 CARRIAGE MANIFOLD ASSEMBLY. REMOVED ITEM #51 MFC00004 & #39 (816301) LABEL, MOVED TO CARRIAGE MANIFOLD ASSEMBLY. RE-LOCATED ITEM #40 & #41 LABELS TO VALVES. RE-ARRANGED MANIFOLD SCHEMATIC TO REFLECT AS BUILT CONDITION.
TLW	E	12/30/97	JPS	CORRECTED BY REMOVING ITEM 4, (MAH00009) #0 'U' DRIVE SCREW. NOT NEEDED FOR 816301 LABEL IN REV. D. DREW DATA LOGGER FITTING @ PORT TXA.
TLW	F	6/16/98	TGW	ADDED ITEM 4 6MSAE PLUG P/N MFC00004 (QTY 2) & ITEM 2 TRANSDUCER CONNECTION KIT P/N ADL1401.
SWB	G	8/21/98	DJL	REPLACED ITEMS 33-36 MFH00035 - 38 FLUSH FACED QUICK DISCONNECTS WITH MFH00001-4 NIPPLE STYLE QUICK DISCONNECTS. (FOR EASE OF USE IN FIELD). DELETED ITEMS 43 & 47 MDL00191 & 192 O'RINGS. (NO LONGER NEEDED W/NIPPLE STYLE Q.D.'S) PARAFLEX HOSE KIT A842403 FOR FLUSH FACED Q.D.'S WAS REPLACED BY NEW PARAFLEX HOSE KIT A842404 FOR NIPPLE STYLE Q.D.'S. THIS CHANGE IS FOR UNITS S/N # 98T2420 AND ON.
TLW	----	11/16/98	MLM	CHANGED (MFI00009) 2" TO (MFI00094) 2-1/2" LG PIPE NIPPLE FOR MORE CLEARANCE WITH DIRECTIONAL VALVE ON TOP OF MANIFOLD.

<u>APPR</u>	<u>REV</u>	<u>DATE</u>	<u>BY</u>	<u>DESCRIPTION OF REVISION</u>
TLW	H	10/14/99	MLM	REVISED ITEM #11 FROM MEF00013 TO MEF00085 AND ITEM #12 FROM MEF00014 TO MEF00086. TO ARON VALVES FOR PRIMARY SOURCE AND CONTINENTAL VALVES FOR REPLACEMENTS. REMOVED ITEMS 40 & 41 (816330)(816331)NOT USED W/ARON VALVE. ADDED LABELS TO NOTE 6 TO BE INCLUDED WITH REPLACEMENT VALVE.
SWB	J	01/07/04	BWW	REVISED ITEM 11 MEF00085 TO MEF00013 AND ITEM 12 MEF00086 TO MEF00014. ADDED NEW ITEMS 39 816330 QTY 1 AND 40 816331 QTY 1. REMOVED NOTE 6 FOR VALVE REPLACEMENT PARTS. CHANGES MADE DUE TO PHASE OUT OF ARON VALVES TO CONTINENTAL.
SWB	K	03/12/04	BWW	REVISED ITEM 54 FROM MFI00094 TO MFI00011 FOR CLEARANCE WITH CONTINENTAL VALVE.
SWB	L	05/18/05	JAB	REVISED ITEM #39 FROM 816330 TO 8163104 CARRIAGE OPEN/CLOSE LABEL & ITEM #40 FROM 816331 TO 8163105 SELECTOR VALVE LABEL TO FIT CONTINENTAL VMD03 VALVE WHICH BEGAN PRODUCTION IN MAY 2004.
SWB	M	11/07/05	BWW	MOVED NOTES TO FACE OF DRAWING FOR CLARITY. REMOVED ADL1401 WHICH IS NO LONGER NECESSARY AND ADDED NEW ITEM 2 MFC00113 QTY 1 AND ITEM 23 MFH00048 FOR NEW DATALOGGER.

Mc28 Pit Bull POWER UNIT HOSE KITParts List

ITEM	PART NO.	QTY.	DESCRIPTION
	A842401		ASSEMBLY
75	HABBBB017	1	HOSE ASSEMBLY OAL 17"
76	HBBDBD017	1	HOSE ASSEMBLY OAL 17"
77	HBBDDD016	3	HOSE ASSEMBLY OAL 16"
78	HBBDED012	1	HOSE ASSEMBLY OAL 12"
79	HBBDED014	1	HOSE ASSEMBLY OAL 14"
80	HCBEDE027	1	HOSE ASSEMBLY OAL 27"
81	HMZZZZ013	1	HOSE ASSEMBLY OAL 13"

NOTES:

1. SEE Mc28 Pit Bull POWER UNIT HYDRAULIC/PLUMBING SCHEMATIC #842401 FOR LOCATION OF ITEM NUMBERS.

DRAWING REVISION HISTORY LISTING

PART NO: A842401
DESCRIPTION: Mc28 Pit Bull POWER UNIT HOSE KIT

<u>APPR.</u>	<u>REV</u>	<u>DATE</u>	<u>BY</u>	<u>DESCRIPTION OF REVISION</u>
DWP	A	10/25/96	SWB	CHANGED HOSE ASSEMBLY (ITEM #81) HMZZZZ011 TO HMZZZZ013.
SWB	-	4/28/98	RLE	TOOK HOSE CHANGES OFF THE PLUMBING/HYDRAULIC SCHEMATIC DRAWING REVISION HISTORY TO CREATE A HOSE KIT DRAWING REVISION HISTORY.

Mc28 Pit Bull POWER UNIT EXTENSION HOSE KITParts List

ITEM	PART NO.	QTY.	DESCRIPTION
	A842403		ASSEMBLY
100	HYBDFD300	1	PARAFLEX 550-6-6 HOSE ASSEMBLY OAL 300"
101	HYBDFE300	1	PARAFLEX 550-6-6 HOSE ASSEMBLY OAL 300"

NOTES:

1. SEE Mc28 Pit Bull POWER UNIT HYDRAULIC/PLUMBING SCHEMATIC #842401 FOR LOCATION OF ITEM NUMBERS.

Mc28 Pit Bull POWER UNIT PARAFLEX HOSE KIT
 (NIPPLE-COUPLER Q.D.'S)
Parts List

ITEM	PART NO.	QTY.	DESCRIPTION
	A842404		ASSEMBLY
100	HYABBD300	1	PARAFLEX 550-6-6 HOSE ASSEMBLY OAL 300"
101	HYADBD300	1	PARAFLEX 550-6-6 HOSE ASSEMBLY OAL 300

NOTES:

1. SEE Mc28 Pit Bull POWER UNIT HYDRAULIC/PLUMBING SCHEMATIC #842401 FOR LOCATION OF ITEM NUMBERS.