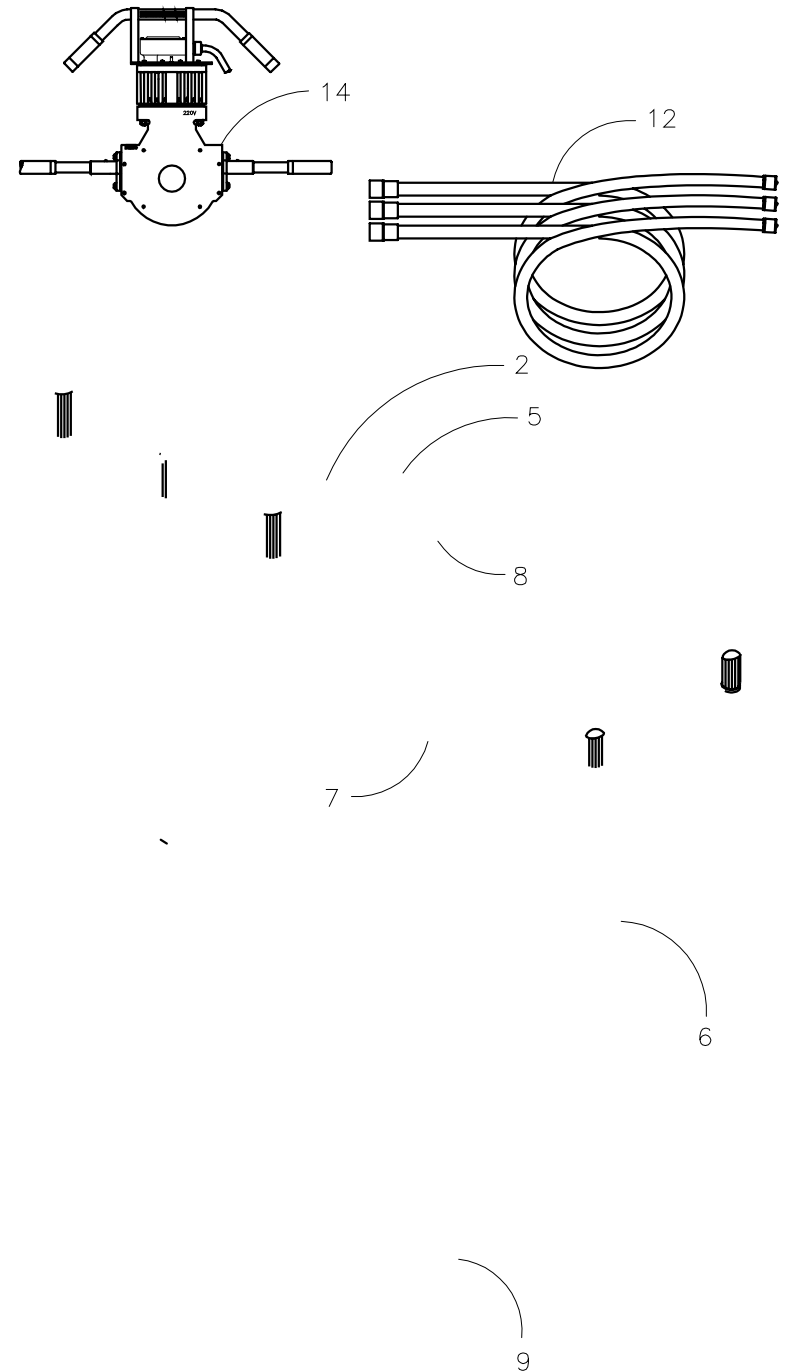
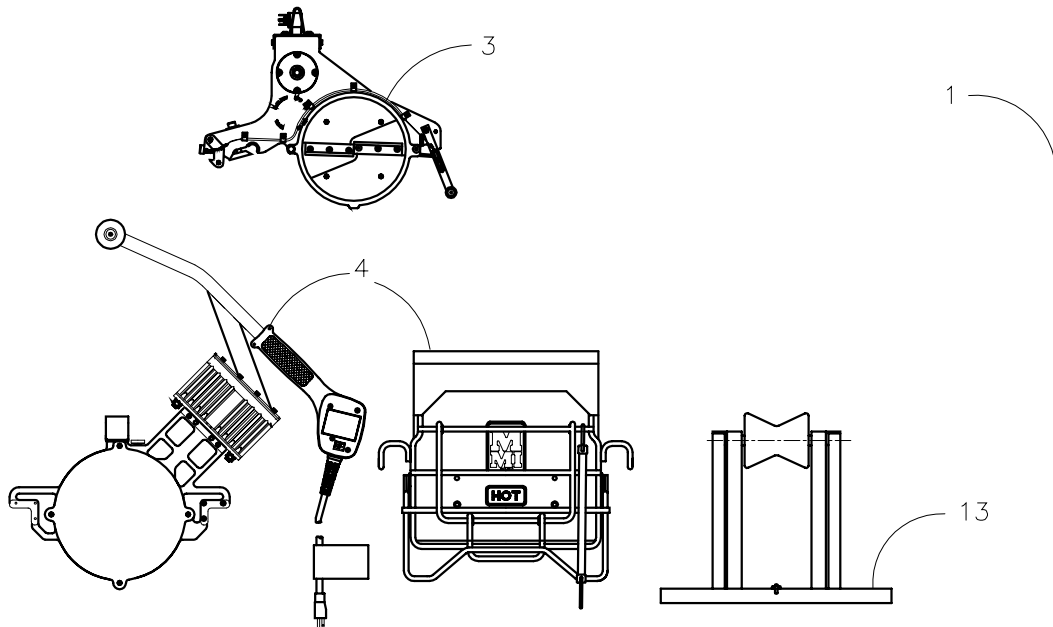


- 2 - 840301 #28 HIGH FORCE CYL. ASSY. SET (STD)
- 2 - 840302 #28 LOW FORCE CYL. ASSY. SET (XHV)
19903 #28 HYDRAULIC FACER ASSY.
- 4 - 848709 #28 DIPS HEATER ASSEMBLY 100-120V, 50/60Hz, 1Ph
- 4 - 848803 #28 DIPS HEATER ASSEMBLY 220-240V, 50/60Hz, 1Ph
- 5 - 850001 #28 FACER PIVOT SHAFT ASSY. (INCLUDED IN JAW SET ASSY.)
- 6 - 850201 #28 SIDEWALL CLAMP ASSY. (COMBINATION FUSION)
- 7 - 850202 #28 GUIDE ROD SUPPORT PLATE ASSY. (BUTT FUSION)
- 8 - 850203 #28 DIPS JAW SET ASSY.
- 9 - 840201 #28 ROLLING CHASSIS ASSY.
- 10 - 801304 #28 BUTT HYDRAULIC SCHEMATIC (NOT SHOWN)
- 10 - 801307 #28 COMBO HYDRAULIC SCHEMATIC (NOT SHOWN)
- 11 - 801302 #28 BUTT PLUMBING SCHEMATIC (NOT SHOWN)
- 11 - 801308 #28 COMBO PLUMBING SCHEMATIC (NOT SHOWN)
- 12 - 851001 #28 DIPS 25' EXTENSION HOSE SET (OPTIONAL)
- 13 - 812501 2"-8" PIPE STAND ASSEMBLY
- 14 - 826803 #28 SIDEWALL HEATER ASSY. 220-240V, 50/60Hz, 1Ph (OPTIONAL)



DRAWING REVISION HISTORY LISTING

PART NO: _ASSY28

DESCRIPTION: #28 COMBINATION /BUTT DIPS FUSION MACHINE GROUPING FOR 850100 ASSEMBLIES.

<u>APPR.</u>	<u>REV</u>	<u>DATE</u>	<u>BY</u>	<u>DESCRIPTION OF REVISION</u>
TMT	A	5/22/97	RLE	801304 #28 HYD.SCHEMATIC WAS 801301 & ADDED 851001 25' HOSE EXTENSION SET.
SWB	B	7/19/97	BB	ADDED 840303 MEDIUM FORCE CYLINDER ASSEMBLY.
TLW	C	02/02/98	JPS	ADDED INCLUDED NOTE UNDER FACER PIVOT SHAFT ASSY.
TLW	D	3/2/99	MLM	ADDED ITEMS TO DWG. FOR NEW CD.
TMT	E	05/14/02	BWW	REVISED TO REPLACE 848701 WITH 848709 AND 848801 WITH 848803 TO SHOW NEW HEATER ASSEMBLIES WITH ELECTRONIC CONTROL.
SWB	-	06/21/04	BWW	UPDATED THE DESCRIPTION OF 840401 AND 839801 TO INCLUDE "W/ EURO PLUG".