



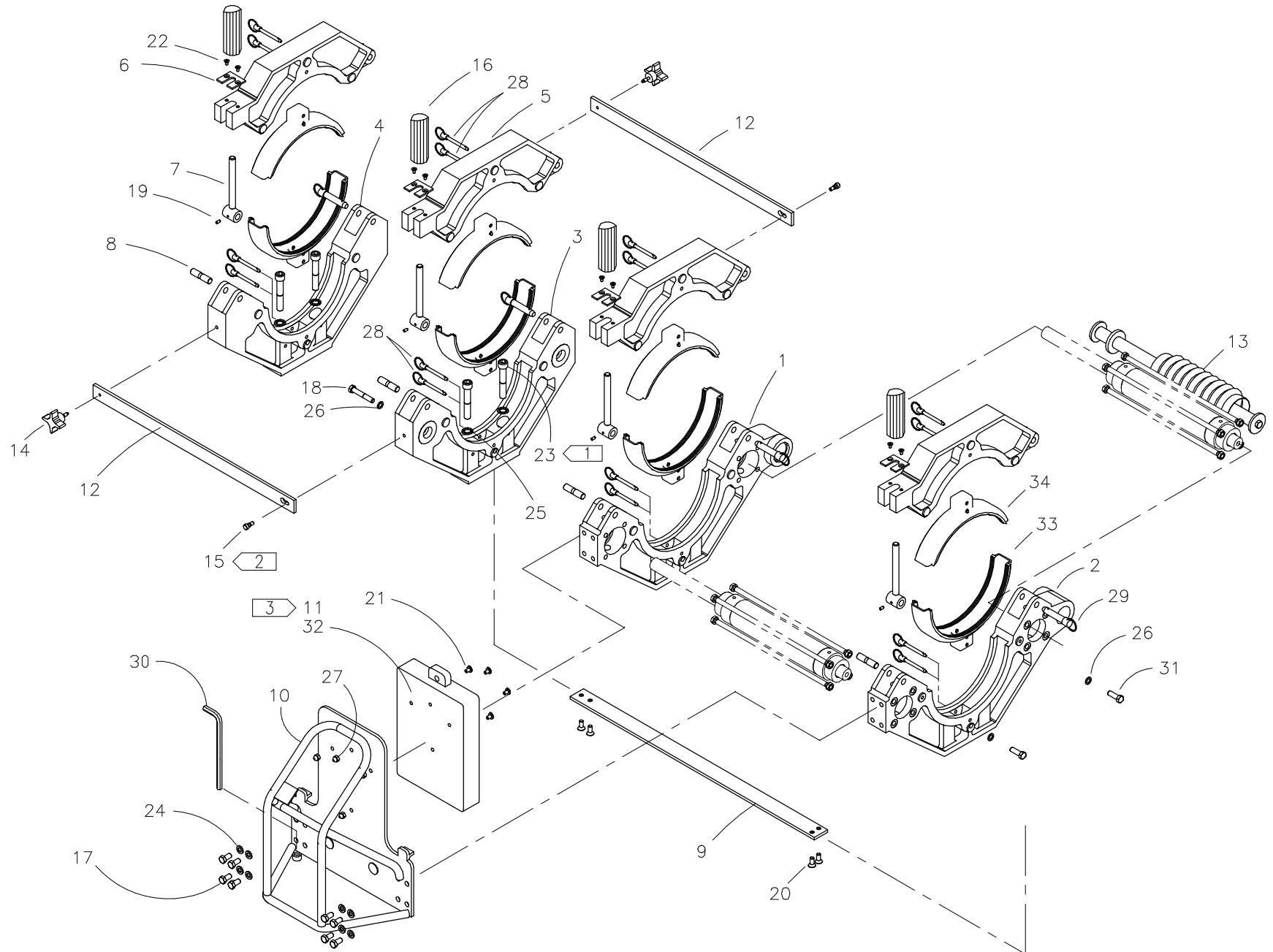
McElroy Manufacturing, Inc.

The leader by design.

Tulsa, Oklahoma U.S.A.

DRAWN: AH	CHECK: SWB	APPRV'D: B	DATE: 1/24/97	DWG No: 850200	SHT No: 3	REV No: C	PART No: 850203
#28 DIPS JAW SET ASSEMBLY							CAD No: 850203

NOTE: THIS DRAWING AND THE INFORMATION CONTAINED THEREIN IS THE CONFIDENTIAL AND PROPRIETARY PROPERTY OF McElroy Manufacturing, Inc. THE DRAWING IS NOT TO BE REPRODUCED IN ANY MANNER, SUBMITTED OUTSIDE PARTIES FOR EXAMINATION, OR USED DIRECTLY OR INDIRECTLY FOR THE PURPOSES OTHER THAN THOSE FOR WHICH IT WAS FURNISHED WITHOUT WRITTEN PERMISSION OF McElroy Manufacturing, Inc.



**#28 DIPS JAW SET ASSEMBLY**PARTS LIST

ITEM	PART NO.	QTY	DESCRIPTION
	<b>850203</b>		<b>ASSEMBLY</b>
1	848506	1	DIPS LOWER INNER HYDRAULIC JAW
2	848507	1	DIPS LOWER OUTER HYDRAULIC JAW
3	848504	1	DIPS LOWER INNER FIXED JAW
4	848505	1	DIPS LOWER OUTER FIXED JAW
5	848602	4	DIPS UPPER JAW
6	801701	4	PAD
7	803901	4	EYE BOLT
8	808501	4	CLAMP PIVOT PIN
9	814301	1	CARRIAGE SUPPORT PLATE
10	849501	1	MANIFOLD MOUNTING BRACKET WELDMENT
11	816342	1	SAFETY INSTRUCTIONS MANUAL LABEL
12	816505	2	BRACE
13	850001	1	FACER PIVOT SHAFT ASSEMBLY
14	839501	2	KNOB
15	839601	2	SHOULDER SCREW
16	A829101	4	CLAMP KNOB ASSEMBLY
17	MAA00063	8	3/8-16 NC X 3/4" LG. HHCS
18	MAB00076	2	3/8-16 NC X 2-1/4" LG. HHCS GR 8
19	MAG00002	4	#10-24 NC X 3/8" LG. SHSS, HALF DOG PT. W/LOCKING PATCH NYLON STRIP
20	MAH00141	4	5/16-18 NC X 3/4" LG. FHSCS SS
21	MAE00092	4	1/4-28NF X 5/8" LG BHSCS STL BL
22	MAN00001	8	#10-24 NC X 3/8" LG. FHSCS SS
23	MAN00003	4	1/2-13 NC X 3" LG. SHCS SS
24	MBE00007	8	3/8" LOCK WASHER
25	MBE00021	4	1/2" INTERNAL TOOTH LOCK WASHER
26	MBG00001	4	3/8" TYPE 'AN' FLT WASHER STL PL
27	MBH00043	4	1/4-20 NC LOW CROWN ACORN NUT
28	MCE00002	16	1/4" DIA X 2.00" GRIP DETENT PIN
29	MCE00006	4	1/2" DIA X 2.00" GRIP DETENT PIN
30	MJL00018	1	3/8" LONG ARM HEX KEY
31	MAB00077	2	3/8-16NC X 1" LG HHCS GR8 STL PL
32	MJQ00259	1	LITERATURE COMPARTMENT
33	807201	4	8" IPS/DIPS MASTER UPPER/LOWER INSERT
34	807202	4	8" IPS/DIPS MASTER UPPER INSERT MOD.

**#28 DIPS JAW SET ASSEMBLY**PARTS LIST

---

ITEM	PART NO.	QTY	DESCRIPTION
------	----------	-----	-------------

---

**NOTES:**

1. INSTALL WITH HIGH TEMPERATURE ANTI-SEIZE COMPOUND.
2. INSTALL WITH THREAD LOCKING COMPOUND.
3. ATTACH LABEL TO OUTSIDE OF ITEM 32 LITERATURE COMPARTMENT FOLDING DOOR

## DRAWING REVISION HISTORY LISTING

**PART NO:** 850203

**DESCRIPTION:** #28 DIPS SET JAW ASSEMBLY

<u>APPR.</u>	<u>REV</u>	<u>DATE</u>	<u>BY</u>	<u>DESCRIPTION OF REVISION</u>
SWB	-----	1/24/97	AH	REDRAWN FROM OLD CARRIAGE ASSEMBLY'S # 840001 #28 COMBINATION CARRIAGE ASSEMBLY. # 840101 #28 BUTT CARRIAGE ASSEMBLY. ADDED OUTER FIXED JAW FROM MAIN ASSY. TO MAKE #28 DIPS JAW ASSY. MOVED SIDEWALL CLAMP ASSY. & GUIDE ROD SUPPORT PLATE ASSY. TO SEPARATE DRAWINGS. ADDED DIPS / IPS JAW INSERTS. REVISED MANIFOLD MOUNTING BRACKET TO NEW STYLE #846201. ADDED NOTE TO INSTALL SHOULDER SCREWS ON FIXED JAW BRACES W/ THREAD LOCKING COMPOUND. CHANGED FIXED JAW BRACKETS TO BE SAME AND REMOVED SPEED WRENCH. IT WAS NO LONGER REQUIRED DUE TO CHANGE IN CLAMP KNOBS FROM HEX TO NEW EXTRUDED STYLE. MOVED ALLEN WRENCH TO MANIFOLD BRACKET.
DWP	A	4/02/97	SS	CHANGED ITEM #21 MAH00147 TO MAE00092.
SWB	-	8/1/97	DJL	CORRECTED ITEM 10 FROM P/N 846201 TO 849501 (MANIFOLD MTG BRACKET WELDMENT).
TLW	B	12/16/97	TGW	ADDED ITEM 11 P/N 816342, QTY (1). REVISED ITEM 18 (MAB00076) QTY FROM (4) TO (2). ADDED ITEM 31 P/N MAB00077, QTY (2). ADDED NOTE #3.
SWB	C	02/02/98	JPS	ADDED ITEM #13 TO BILL OF MATERIALS (850001) FACER PIVOT SHAFT ASSEMBLY TO MATCH PRODUCT STRUCTURE.