



McElroy Manufacturing, Inc.

The leader by design.

Tulsa, Oklahoma U.S.A.

DRAWN: AH	CHECK: SWB	APPRV'D: B	DATE: 1/24/97	DWG No: 850200	SHT No: 2	REV No: B	PART No: 850202
-----------	------------	------------	---------------	----------------	-----------	-----------	-----------------

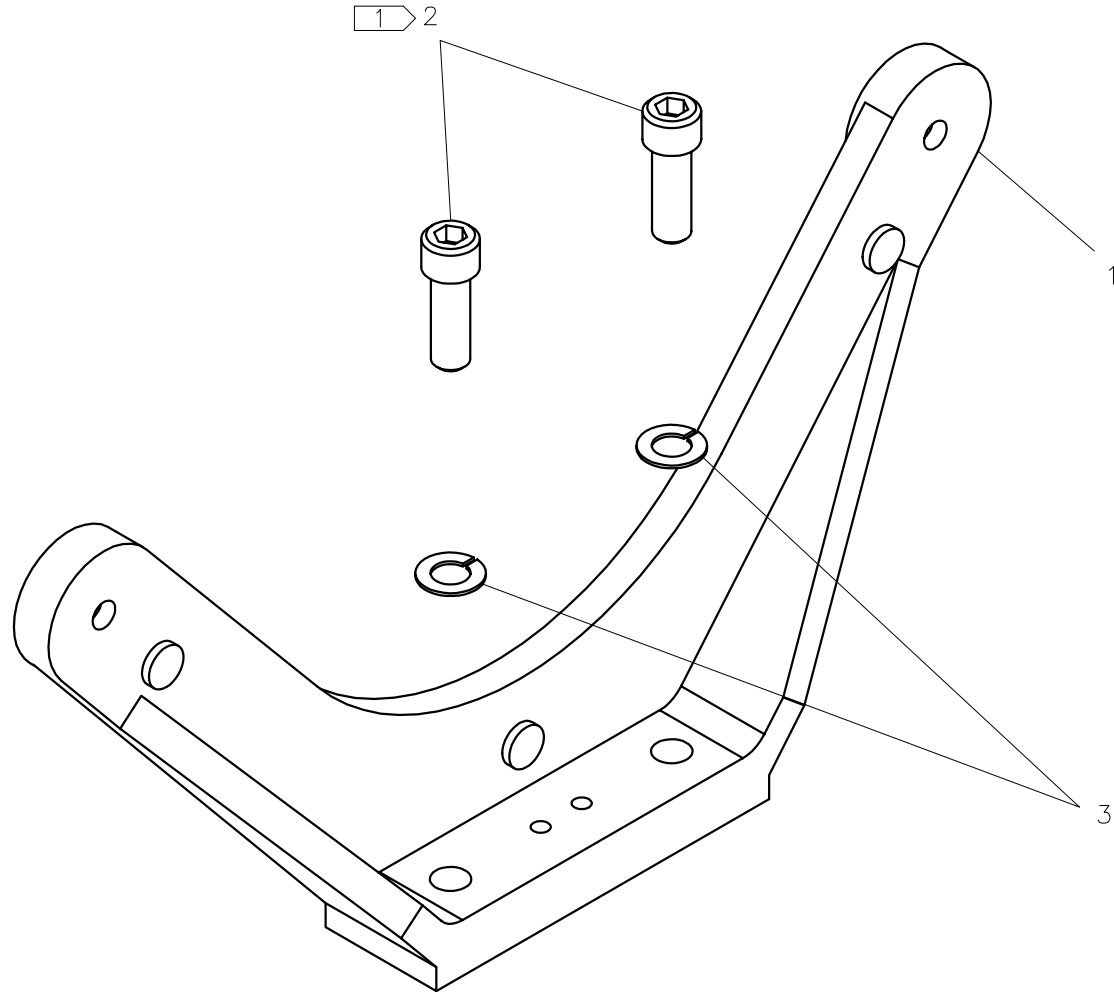
#28 GUIDE ROD SUPPORT PLATE ASSEMBLY

CAD No: 850202

NOTE: THIS DRAWING AND THE INFORMATION CONTAINED THEREIN IS THE CONFIDENTIAL AND PROPRIETARY PROPERTY OF McElroy Manufacturing, Inc. THE DRAWING IS NOT TO BE REPRODUCED IN ANY MANNER, SUBMITTED OUTSIDE PARTIES FOR EXAMINATION, OR USED DIRECTLY OR INDIRECTLY FOR THE PURPOSES OTHER THAN THOSE FOR WHICH IT WAS FURNISHED WITHOUT WRITTEN PERMISSION OF McElroy Manufacturing, Inc.

NOTES:

1. INSTALL WITH HIGH TEMP ANTI-SEIZE.



#28 GUIDE ROD SUPPORT PLATE ASSEMBLYParts List

ITEM	PART NO.	QTY.	DESCRIPTION
	850202	1	ASSEMBLY
1	811803	1	GUIDE ROD SUPPORT PLATE
2	MAN00002	2	1/2-13NC X 1-1/2" LG. SHCS SS
3	MBE00009	2	1/2" REGULAR SPLIT LOCK WASHER

DRAWING REVISION HISTORY LISTING

PART NO: 850202

DESCRIPTION: #28 GUIDE ROD SUPPORT PLATE ASSEMBLY

<u>APPR.</u>	<u>REV</u>	<u>DATE</u>	<u>BY</u>	<u>DESCRIPTION OF REVISION</u>
SWB	-----	1/24/97	AH	MOVED GUIDE ROD SUPPORT PLATE COMPONENTS FROM OLD #28 BUTT CARRIAGE ASSY. # 840101, TO MAKE SEPERATE ASSY. DRAWING. REMOVED NOTE FOR ANTI-SEIZE LUBRICANT USED ON MOUNTING BOLTS, SINCE THEY HAD BEEN CHANGED TO STAINLESS STEEL.
TLW	A	12/16/97	TGW	REVISED ITEM 3 P/N FROM MBE00021 (INTERNAL TOOTH LOCK WASHER) TO MBE00009 (REG. SPLIT LOCK WASHER).
SWB	B	05/24/04	BWW	ADDED NOTE 1 TO USE HIGH TEMP ANTI-SEIZE UPON ASSEMBLY OF ITEM 2 TO BE CONSISTENT WITH OTHER MOUNTING BOLTS.