



McElroy Manufacturing, Inc.

The leader by design.

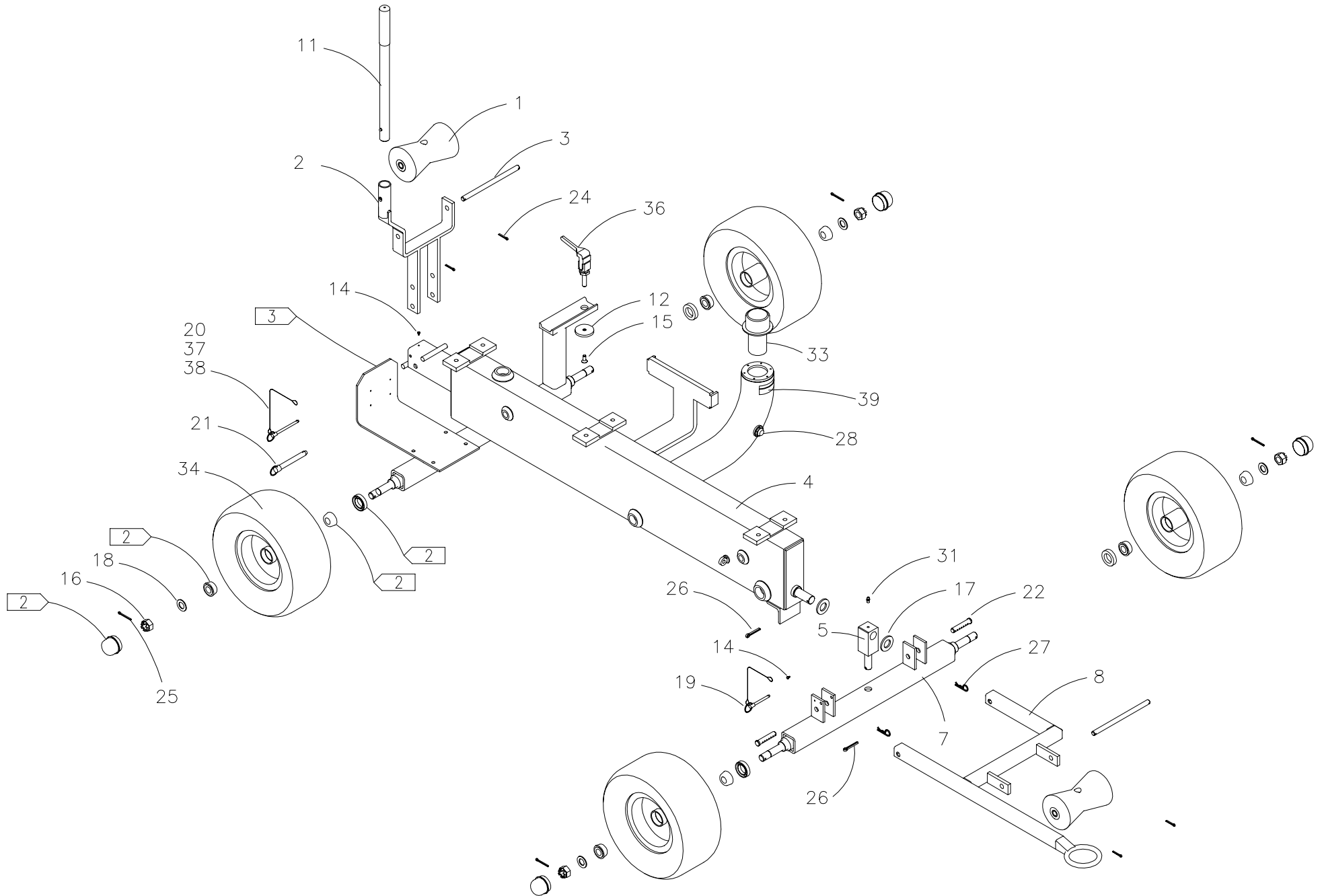
Tulsa, Oklahoma U.S.A.

DRAWN: RLE	CHECK: BWP	APPRV'D: B	DATE: 9/18/94	DWG No.: 840200	SHT No.: 1	REV No.: K	PART No.: 840201
------------	------------	------------	---------------	-----------------	------------	------------	------------------

#28 ROLLING CHASSIS ASSEMBLY

CAD No.: 840201

NOTE: THIS DRAWING AND THE INFORMATION CONTAINED THEREIN IS THE CONFIDENTIAL AND PROPRIETARY PROPERTY OF McElroy Manufacturing, Inc. THE DRAWING IS NOT TO BE REPRODUCED IN ANY MANNER, SUBMITTED OUTSIDE PARTIES FOR EXAMINATION, OR USED DIRECTLY OR INDIRECTLY FOR THE PURPOSES OTHER THAN THOSE FOR WHICH IT WAS FURNISHED WITHOUT WRITTEN PERMISSION OF McElroy Manufacturing, Inc.



#28 ROLLING CHASSIS ASSEMBLYPARTS LIST

ITEM	PART NO.	QTY	DESCRIPTION
	840201		ASSEMBLY
1	802104	2	PIPE LIFT ROLLER W/ZERK
2	812101	1	ROLLER SUPPORT WELDMENT
3	812801	2	ROLLER SHAFT
4	813005	1	CHASSIS
5	813305	1	PIVOT BLOCK
6			
7	813502	1	FRONT AXLE WELDMENT
8	813603	1	TOW BAR WELDMENT
9			
10			
11	402801	1	LEVER ASSEMBLY
12	405201	1	BRAKE PAD
13			
14	MAH00140	2	#6-32 NC X 1/4" LG. HEX WASHER HEAD TYPE 'F' THREAD FORMING SCREW
15	MAH00141	1	5/16-18 NC X 3/4" LG. FHSCS SS
16	MBD00032	4	3/4-16 NF CASTLE NUT
17	MBF00013	2	7/8" TYPE 'A' NARROW SAE FLAT WASHER
18	MBG00004	4	3/4" TYPE 'AN' FLT WASHER STL PL
19	MCE00002	1	1/4" DIA X 2.00" GRIP DETENT PIN
20	MCE00003	1	1/4" DIA X 3.00" GRIP DETENT PIN
21	MCE00015	1	1/2" DIA X 3.50" GRIP DETENT PIN
22	MCF00007	2	1/2" DIA X 2-9/32" GRIP CLEVIS PIN
23			
24	MCH00001	4	1/8" DIA. X 1" LG. COTTER PIN
25	MCH00002	4	1/8" DIA. X 1-1/2" LG. COTTER PIN
26	MCH00003	2	3/16" DIA X 1-1/2 LG COTTER PIN
27	MCH00015	2	3/8" DIA X 1-7/8" LG HAIR PIN
28	MFJ00013	1	OIL EYE LENSE & O-RING
29			
31	MFJ00001	1	GREASE ZERK
32			
33	MFK00001	1	FILLER CAP
34	MIA00006	4	WHEEL AND TIRE ASSEMBLY W/ BEARING, SEAL & CAP.
35			
36	MJA00003	1	TOGGLE CLAMP
37	MJQ00025	2	COATED CABLE
38	MJQ00026	4	FERRULE
39	8163106	1	HYDRAULIC OIL SPECIFICATION LABEL

#28 ROLLING CHASSIS ASSEMBLYPARTS LIST

ITEM	PART NO.	QTY	DESCRIPTION
------	----------	-----	-------------

NOTES:

- 1.
2. ITEM #34 MIA00006 CONTAINS: (1) MIB00007 GREASE CAP, (1) MDL00121 SEAL AND (2) MDM00125 BEARINGS. THESE PARTS MAY BE ORDERED SEPARATELY.
3. ATTACH NAMEPLATE AT FINAL ASSEMBLY USING (4) DRIVE SCREWS.

DRAWING REVISION HISTORY LISTING

PART NO: 840201

DESCRIPTION: #28 ROLLING CHASSIS ASSEMBLY

<u>APPR.</u>	<u>REV</u>	<u>DATE</u>	<u>BY</u>	<u>DESCRIPTION OF REVISION</u>
SWB	A	10/31/95	RLE	ADDED FLAG NOTE 1 FOR REPLACEMENT LENSE FOR SIGHT GLASS ON FILLER NECK. CORRECTED ITEM 17 ON PARTS LIST FROM MFB00013 TO MBF00013.
SWB	B	7/31/96	AH	REMOVED 816201 GUARD & MAG00003 SCREWS. REDRAWN TO AUTOCAD FROM BRAVO.
TLW	C	12/16/97	TGW	REVISED ITEM 10 P/N FROM 821001 TO 841201. REVISED ITEM 14 QTY FROM (6) TO (2). ADDED ITEM 13 P/N MCK00008, QTY (4). REVISED PARTS LIST TO REMOVE MANUFACTURER'S NAMES & P/N'S.
SWB	D	11/11/98	DJL	REMOVED ITEM 13 MCK00008 RIVET. NAME PLATE IS BEING SUPPLIED WITH ADHESIVE BACKING.
TLW	E	12/07/00	MLM	CHANGED ITEM-1 FROM 802106 TO 802104-PIPE LIFT ROLLER W/ZERK.DELETED ITEM-32 (GREASE ZERK) THEY NOW COME WITH THE ROLLER.
SWB	F	11/02/01	ALK	REMOVED ITEM #10 841201 NAMEPLATE. ITEM TO BE ADDED AT FINAL ASSEMBLY. REMOVED ITEMS #28, #29, & #35. ADDED FLAG NOTE 2 DESCRIBING MIA00006.
SWB	G	03/12/03	BWW	REVISED TO ADD NOTE 3 FOR ATTACHMENT OF NAMEPLATE AT FINAL ASSEMBLY.
MLM	H	04/16/03	BWW	ADDED ITEM 28 MFJ00013 QTY 1 WHICH IS NOW PURCHASED SEPARATELY AND REMOVED NOTE 1.
SWB	J	05/11/04	LBK	PARTS 813304 & 813401 WERE JOINED TO FORM (1) PART 813305, AND ITEM 23 MCG00007 WAS REMOVED.
SWB	K	10/25/04	MLM	REVISED TO ADD ITEM-39 (HYDRAULIC OIL SPECIFICATION LABEL-8163106)