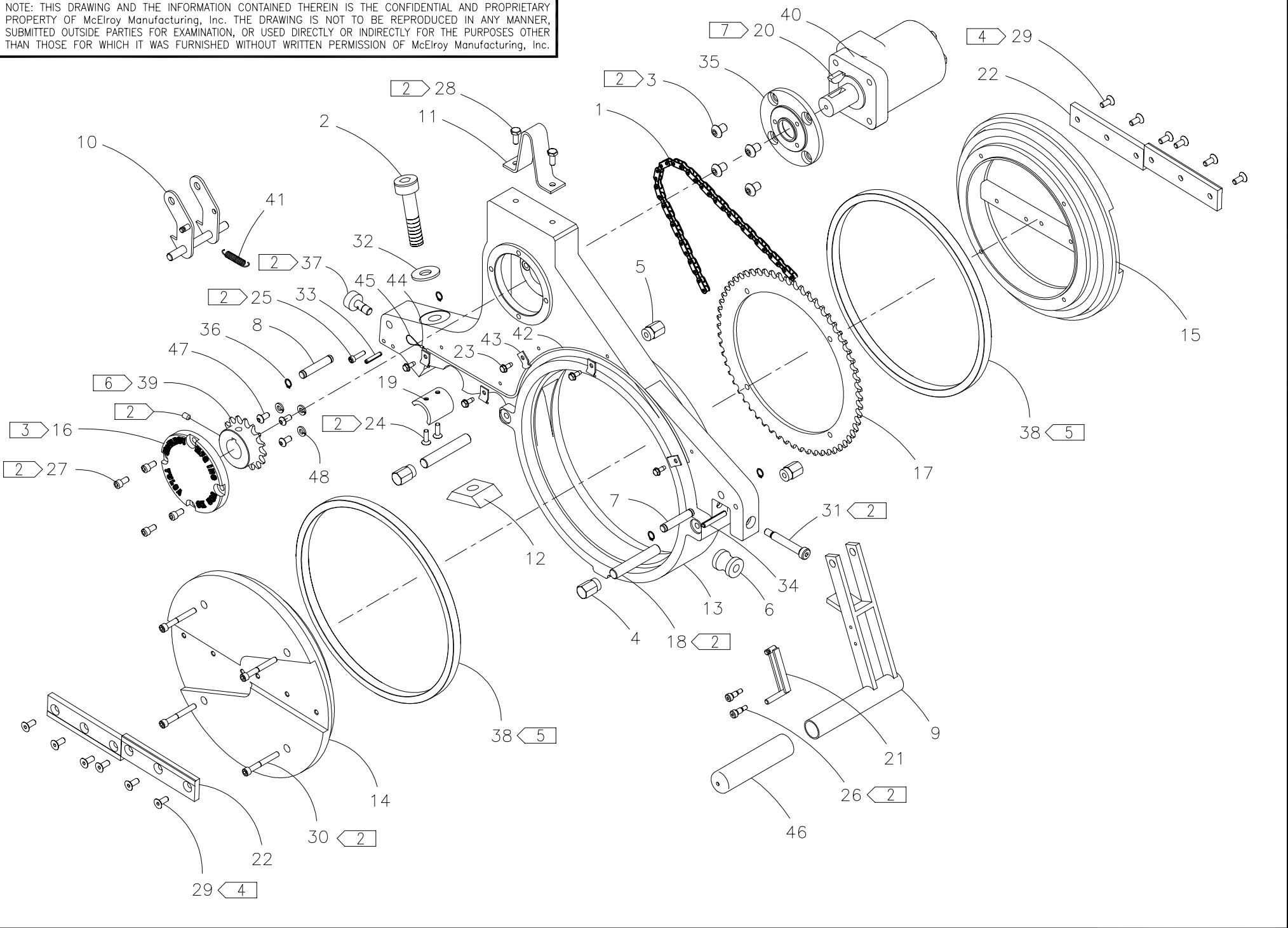




McElroy Manufacturing, Inc.
The leader by design.
Tulsa, Oklahoma U.S.A.

DRAWN: RLE	CHECK: BWP	APPR'D: B	DATE: 9/16/94	DWG No: 819900	SHT No: 3	REV No: L	PART No: 819903
#28 HYDRAULIC FACER ASSEMBLY							CAD No: 819903

NOTE: THIS DRAWING AND THE INFORMATION CONTAINED THEREIN IS THE CONFIDENTIAL AND PROPRIETARY PROPERTY OF McElroy Manufacturing, Inc. THE DRAWING IS NOT TO BE REPRODUCED IN ANY MANNER, SUBMITTED OUTSIDE PARTIES FOR EXAMINATION, OR USED DIRECTLY OR INDIRECTLY FOR THE PURPOSES OTHER THAN THOSE FOR WHICH IT WAS FURNISHED WITHOUT WRITTEN PERMISSION OF McElroy Manufacturing, Inc.



28 HYDRAULIC FACER ASSEMBLY

Parts List

ITEM	PART NO.	QTY.	DESCRIPTION
	819903		ASSEMBLY
1	A818202	1	FACER CHAIN ASSEMBLY
2	MAN00003	1	1/2-13NC x 3" LG. SHCS SS
3	MAE00050	4	3/8-16NC x 1/2 LG. BHSCS
4	807701	2	REST BUTTONS
5	807702	2	REST BUTTONS
6	814601	1	GUIDE ROD ROLLER
7	814701	1	HANDLE PIVOT PIN
8	814901	1	LATCH HANDLE PIVOT PIN
9	815101	1	LATCH HANDLE
10	815201	1	FACER LATCH
11	815902	1	HOIST HANDLE
12	816101	1	WEDGE
13	820003	1	FACER BODY
14	820102	1	COUNTERBORED BLADE HOLDER
15	820103	1	TAPPED BLADE HOLDER
16	820203	1	COVER PLATE
17	820301	1	DRIVEN SPROCKET
18	828001	2	MOUNTING SCREW
19	836701	1	FACER PIVOT GUIDE
20	853301	1	WOODRUFF KEY MODIFICATION
21	1818703	1	TRIGGER
22	3615701	4	FACER BLADE
23	MAH00111	5	#10-24NC x 1/2 LG. HWH THREAD FORMING SCREW
24	MAD00032	2	#10-24 NC x 5/8 LG. FHSCS
25	MAN00004	1	#10-24 NC x 3/4 LG. SHCS SS
26	MAN00005	2	1/4 x 3/8 LG SHOULDER SCREW SS
27	MAH00050	4	1/4-20 NC x 1/2 LG. SHCS SS
28	MAB00134	2	1/4-20 NC x 5/8 LG. HHCS
29	MAH00073	12	1/4-20 NC x 5/8 LG. FHSCS SS
30	MAH00067	4	1/4-20 NC x 2" LG. SHCS SS
31	MAN00007	1	3/8 X 2" LG SHOULDER SCREW SS
32	MBF00009	1	1/2 FLAT WASHER
33	MCG00005	1	3/16 x 1" LG. ROLL PIN
34	MCG00011	1	1/4 x 1-1/2 LG. ROLL PIN
35	833402	1	HYDRAULIC FACER MOTOR ADAPTER

28 HYDRAULIC FACER ASSEMBLYParts List

ITEM	PART NO.	QTY.	DESCRIPTION
36	MCB00049	4	SNAP RING
37	MDM00055	1	CAM FOLLOWER
38	MDM00030	2	BALL BEARING
39	MDF00057	1	CHAIN SPROCKET
40	MEC00021	1	HYDRAULIC MOTOR
41	MJE00001	1	SPRING
42	MJQ00027	1.75ft	CLOSE WOUND SPRING
43	MJQ00024	5	JIFFY CLIP
44	MJQ00046	2	FERRULE
45	MJQ00025	3ft	.045 DIA. COATED CABLE
46	MJJ00002	1	HAND GRIP
47	MAE00092	3	1/4-28 NF x 5/8 LG. BHSCS SS
48	MBE00005	3	1/4 REGULAR SPLIT LOCK WASHER
49	840601	1	FACER HYDRAULIC/PLUMBING SCHEMATIC (NOT SHOWN)

NOTES:

1. FILL FACER CAVITY 2/3 FULL WITH EP GREASE.
2. INSTALL WITH MEDIUM STRENGTH THREAD LOCKING COMPOUND.
3. INSTALL WITH GASKET SEALER.
4. INSTALL WITH HIGH TEMPERATURE ANTI-SEIZE COMPOUND.
5. INSTALL WITH HIGH STRENGTH RETAINING COMPOUND USING A COMPATIBLE CLEANER FIRST.
6. REMOVE THE SET SCREW ADJACENT TO THE KEYWAY, BUT INSTALL & TIGHTEN THE SET SCREW LOCATED 90° FROM THE KEYWAY.
7. INSTALL WITH MODIFIED PART OF KEY CLOSEST TO HYDRAULIC MOTOR. APPLY APPROXIMATELY ONE DROP OF HIGH STRENGTH RETAINING COMPOUND TO HOLD KEY IN PLACE.

DRAWING REVISION HISTORY LISTING

PART NO: 819903

DESCRIPTION: #28 HYDRAULIC FACER ASSEMBLY

<u>APPR.</u>	<u>REV</u>	<u>DATE</u>	<u>BY</u>	<u>DESCRIPTION OF REVISION</u>
LM	A	6/3/95	LM	ITEM 39(MDF00057) WAS MDF00056 & ITEM 40(MEC00017) WAS MEC00011, EFFECTIVE 6-15-95. ITEM 39(MDF00056) WAS MDF00057 & ITEM 40 (MEC00011) WAS MEC00017, EFFECTIVE 8-23-95. CHANGED BOM ONLY... BECAUSE WE COULD NOT GET HYD MOTORS IN TIME FOR NEW DESIGN FACER.
SWB	B	1/2/97	AH	REDRAWN TO AUTOCAD FROM BRAVO
SWB	-	2/14/97	TLW	CHANGED DRAWING TO SHOW NEW EXTRUDED DESIGN CLAMP KNOB THAT REPLACES OLD CLAMP HEX KNOB.
SWB	C	7/03/97	BB	REVISED BECAUSE CLAMP KNOB WAS DIFFICULT TO PROPERLY TIGHTEN. ITEM (2) WAS A829001 CLAMP KNOB ASSEMBLY. REPLACED WITH 1/2-13NC X 2-3/4 LG SHCS SS. ITEM (12) WAS 816103 REPLACED WITH 816101.
SWB	-	9/16/97	BB	REVISED ITEM #2 FROM 2-3/4" LG TO 3" LG FOR PROPER ENGAGEMENT WITH WEDGE.
SWB	D	11/4/97	RLE	REMOVED FLAG NOTE 2 FROM ITEM 30, MAH00067, & ADDED ITEM 48, MBE00005.
TLW	-	04/30/98	RLE	REVISED ITEM #24 FROM MAN00006 TO MAD00032.
SWB	-	09/01/98	TLW	REVISED ITEM #33 FROM MCG00026 TO MCG00005. WE HAD DUPLICATE 'M' NUMBERS FOR SAME PART. REVISED TO HIGHER USAGE 'M' NUMBER.
LAF	E	5/3/99	AH	REVISED FACER ASSEMBLY FOR NEW HYDRAULIC MOTOR. CHANGED CHAIN SPROCKET ITEM #39(MDF00056) TO (MDF00057). CHANGED HYD. MOTOR ITEM #40(MEC00011) TO (MEC00021). DELETED SPACER ITEM #20(836901). ADDED WOODRUFF KEY ITEM #20(853301). ADDED ITEM #35(833402) AND ITEM #3(MAE00050). EFFECTIVE SN <u>9891720</u> & ON.
TLW	F	02/14/00	RLE	REVISED ITEM #39 SPROCKET & ADDED NOTE #6 PER PCR99054.
LA	G	09/21/01	ALK	CHANGED QTY. OF ITEM 42 FROM 1.58' TO 1.75' AND ITEM 45 FROM 2.58' TO 3'. ADDED LOCTITE CALLOUT TO NOTES 2,3,5,& 7. ADDED NOTE 7 TO CLARIFY PLACEMENT OF KEY.
SWB	H	06/12/02	BWW	REVISED TO ADD ITEM 49 840601 FACER HYDRAULIC/PLUMBING SCHEMATIC.
LAA	J	01/17/03	BWW	REVISED ITEM 20 FROM 853301 TO 853302. CHANGED NOTE 7 TO REFLECT KEY REQUIREMENTS FOR DIFFERENT MOTORS. CHANGES MADE DUE TO VENDOR CHANGE FROM DANFOSS TO WHITE.
SWB	K	3/17/03	RLE	REVISED NOTES TO AGREE WITH ENGINEERING STANDARDS. PICTORALLY CHANGED ITEM -40 BACK TO ORIGINAL HYDRAULIC MOTOR WHICH WAS CHANGED TO WHITE MOTOR @ REV. J.
LAA	L	04/29/03	BWW	UPDATED ITEM 40 MEC00021 PICTORALLY TO MORE ACCURATELY REPRESENT NEW PARKER MOTOR.