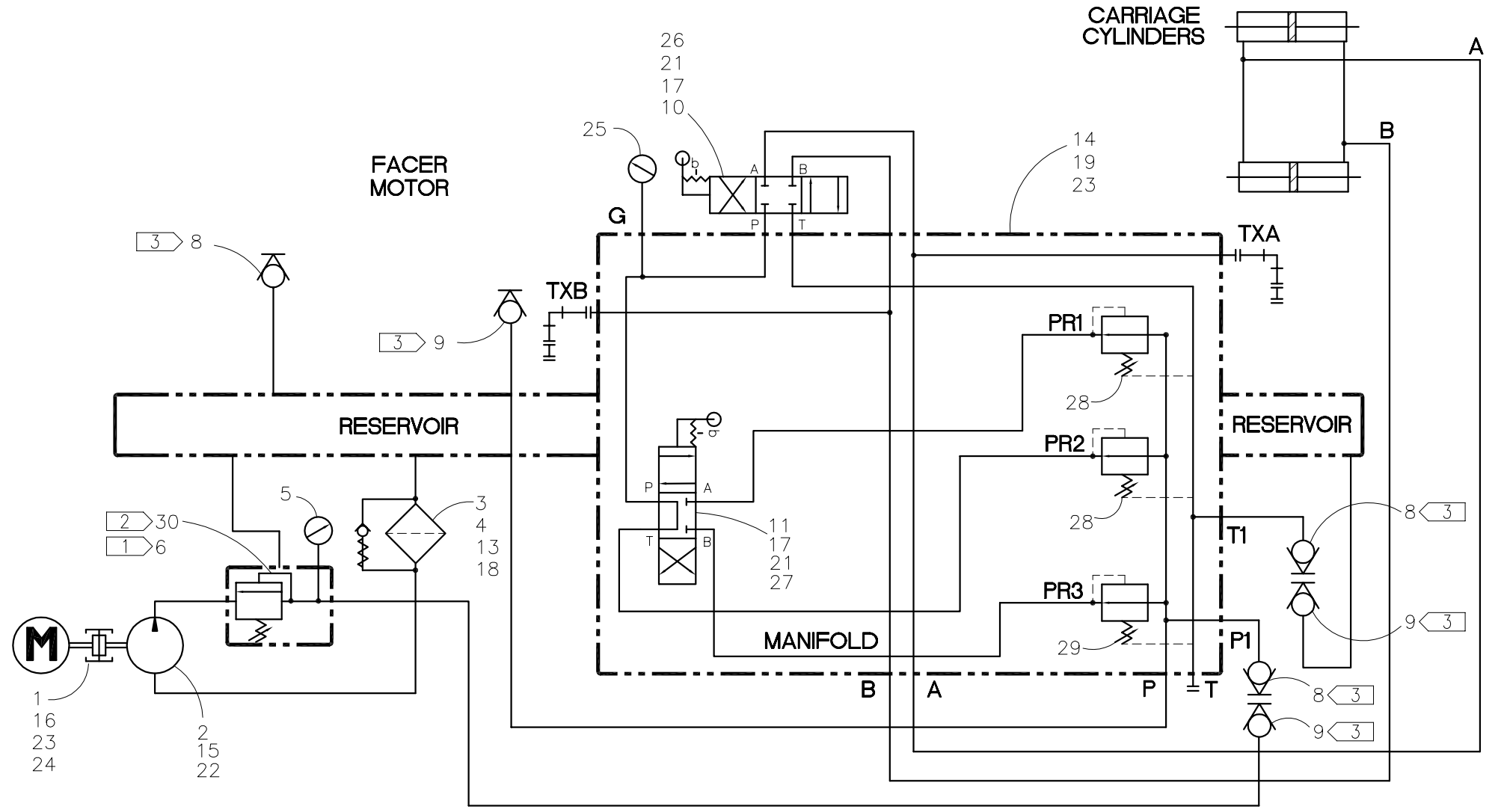




McElroy Manufacturing, Inc.
 The leader by design.
 Tulsa, Oklahoma U.S.A.

DRAWN: TGW	CHECK: TLW	APPRV'D: SWB	DATE: 6/17/98	DWG No.: 801300	SHT No.: 7	REV No.: E	PART No.: 801307
#28 COMBO HYDRAULIC SCHEMATIC							CAD No.: 801307

NOTE: THIS DRAWING AND THE INFORMATION CONTAINED THEREIN IS THE CONFIDENTIAL AND PROPRIETARY PROPERTY OF McElroy Manufacturing, Inc. THE DRAWING IS NOT TO BE REPRODUCED IN ANY MANNER, SUBMITTED TO OUTSIDE PARTIES FOR EXAMINATION, OR USED DIRECTLY OR INDIRECTLY FOR THE PURPOSES OTHER THAN THOSE FOR WHICH IT WAS FURNISHED WITHOUT WRITTEN PERMISSION OF McElroy Manufacturing, Inc.



#28 COMBO HYDRAULIC SCHEMATICPARTS LIST

ITEM	PART NO.	QTY	DESCRIPTION
	801307		HYDRAULIC SCHEMATIC
1	MEA00002	1	PUMP ADAPTER
2	MEA00052	1	HYDRAULIC PUMP
3	MED00014	1	FILTER HEAD
4	MED00017	1	FILTER ELEMENT
5	MEE00005	1	PRESSURE GAUGE
6	MEH00007	1	RELIEF VALVE
7			
8	MFH00001	3	1/4FNPT QUICK DISCONNECT COUPLER
9	MFH00002	3	1/4FNPT QUICK DISCONNECT NIPPLE
10	8163104	1	CARRIAGE OPEN/CLOSE LABEL
11	8163105	1	SELECTOR VALVE LABEL
12			
13	839901	1	FILTER GUARD
14	1814002	1	CARRIAGE MANIFOLD ASSEMBLY
15	MAB00048	2	5/16-18 NC X 5-1/2 LG HHCS
16	MAB00065	4	3/8-16 NC X 1-1/4 LG HHCS
17	MAN00008	8	#10-24 NC X 1 LG SHCS SS
18	MAB00002	2	1/4-20 NC X 1/2 LG HHCS
19	MAN00009	2	3/8-16 NC X 1 LG SHCS SS
20			
21	MBE00004	8	#10 LOCK WASHER
22	MBE00006	2	5/16 LOCK WASHER
23	MBE00007	6	3/8 LOCK WASHER
24	MDJ00005	1	5/8 X .439 COUPLING ASSEMBLY
25	MEE00004	1	PRESSURE GAUGE
26	MEF00013	1	DIRECTIONAL VALVE
27	MEF00014	1	DIRECTIONAL VALVE
28	MEG00001	2	PRESSURE REDUCING VALVE CARTRIDGE
29	MEG00002	1	PRESSURE REDUCING VALVE CARTRIDGE
30	816309	1	LABEL

NOTES:

1. Do not adjust this valve below 500 PSI. It will overload the pump motor.
2. Attach with Loctite Super Bond 495.
3. When ordering replacement parts for these items verify quick disconnect fitting; for nipple style order MFH00001/MFH00002 as shown. For flush face style order MFH00027/MFH00028.
- 4.

DRAWING REVISION HISTORY LISTING

PART NO: 801307
DESCRIPTION: #28 COMBO HYDRAULIC SCHEMATIC

<u>APPR.</u>	<u>REV</u>	<u>DATE</u>	<u>BY</u>	<u>DESCRIPTION OF REVISION</u>
TLW	A	6/24/99	MRP	RELOCATED FACER VALVE, ITEM 7, TO OUTLET PORT OF HYD MOTOR TO MAKE THE HANDLE MORE ACCESSIBLE. THIS WAS NECESSARY DUE TO THE CHANGE IN HYD MOTOR ON FACER ASSEMBLY 819903 REV. E
TLW	-	7/22/99	MRP	REVISED ITEM #26 FROM MEF00013 TO MEF00085 AND ITEM #27 FROM MEF00014 TO MEF00086. TO ARON VALVES FOR PRIMARY SOURCE AND CONTINENTAL VALVES FOR REPLACEMENTS
TLW	B	10/14/99	MLM	REMOVED ITEMS 11 & 12 (816330)(816331)NOT USED W/ARON VALVE. ADDED LABELS TO NOTE 4 TO BE INCLUDED WITH REPLACEMENT VALVE.
SWB	C	06/12/02	BWW	REVISED TO REMOVE ITEM 7 MEI00005. CHANGED QTY OF ITEM 8 MFH00001 FROM 4 TO 3 AND QTY OF ITEM 9 MFH00002 FROM 4 TO 3. PARTS MOVED TO 840601 FACER HYDRAULIC/PLUMBING SCHEMATIC.
SWB	D	01/07/04	BWW	REVISED ITEM 26 MEF00085 TO MEF00013 AND ITEM 27 MEF00086 TO MEF00014. ADDED NEW ITEMS 10 816330 QTY 1 AND 11 816331 QTY 1. REMOVED NOTE 4 FOR VALVE REPLACEMENT PARTS. CHANGES MADE DUE TO PHASE OUT OF ARON VALVES TO CONTINENTAL.
SWB	E	9/19/05	MLM	REVISED ITEM #10 FROM 816330 TO 8163104 CARRIAGE OPEN/CLOSE LABEL & ITEM #11 FROM 816331 TO 8163105 SELECTOR VALVE LABEL TO FIT CONTINENTAL VMD03 VALVE WHICH BEGAN PRODUCTION IN MAY 2004.