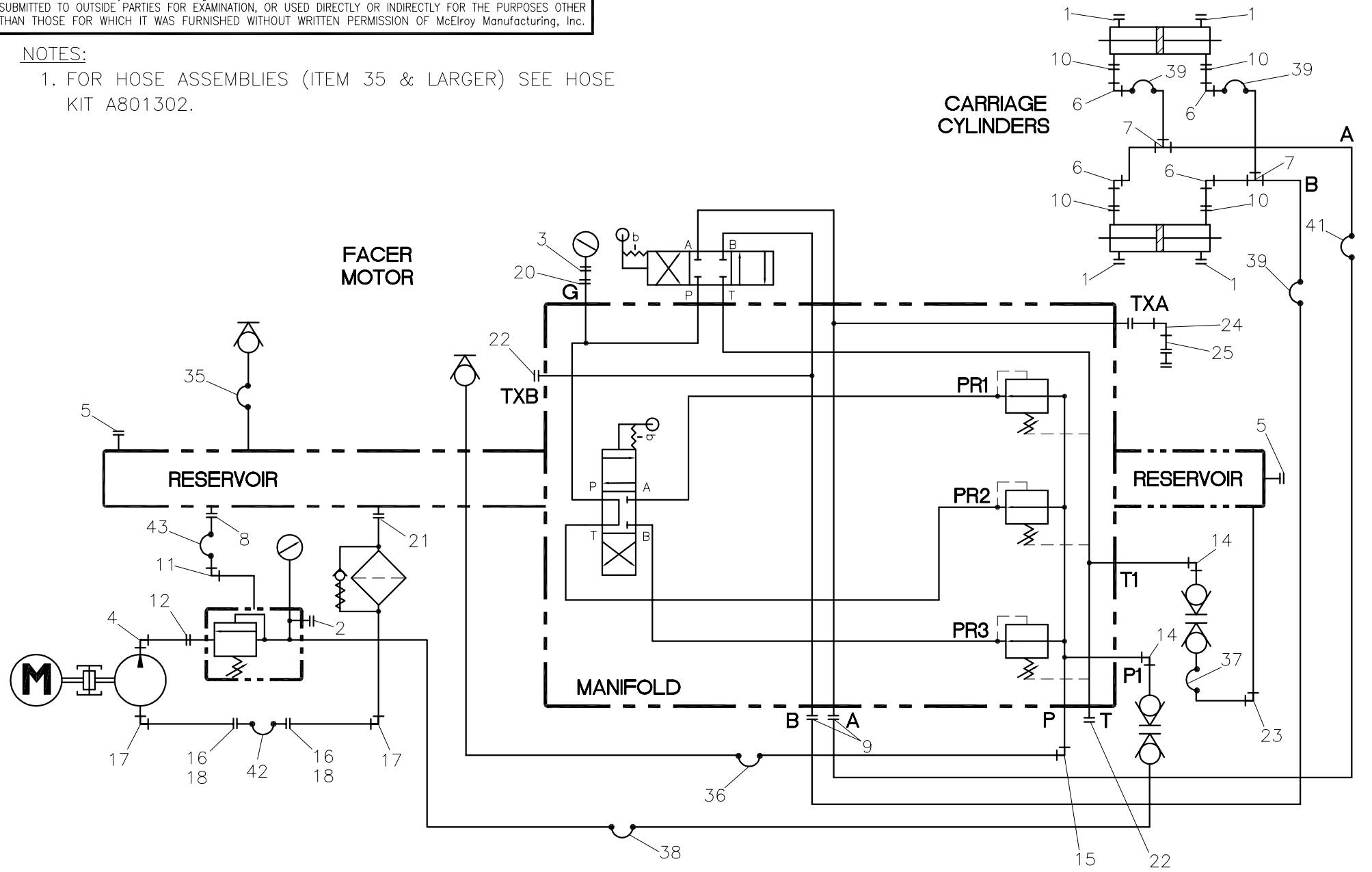




NOTE: THIS DRAWING AND THE INFORMATION CONTAINED THEREIN IS THE CONFIDENTIAL AND PROPRIETARY PROPERTY OF McElroy Manufacturing, Inc. THE DRAWING IS NOT TO BE REPRODUCED IN ANY MANNER, SUBMITTED TO OUTSIDE PARTIES FOR EXAMINATION, OR USED DIRECTLY OR INDIRECTLY FOR THE PURPOSES OTHER THAN THOSE FOR WHICH IT WAS FURNISHED WITHOUT WRITTEN PERMISSION OF McElroy Manufacturing, Inc.

- NOTES:**
 1. FOR HOSE ASSEMBLIES (ITEM 35 & LARGER) SEE HOSE KIT A801302.



#28 BUTT PLUMBING SCHEMATICParts List

ITEM	PART NO.	QTY	DESCRIPTION
	801302		ASSEMBLY
1	MFA00001	4	1MPT PLUG
2	MFA00007	1	4MPT PLUG
3	MFA00011	1	4FPT/4FPT 45 ELBOW
4	MFA00022	1	8MPT/8FPT ELBOW
5	MFA00035	2	16MPT PLUG
6	MFB00016	4	4FPT/6MJIC ELBOW
7	MFB00018	2	6FSJIC/6MJIC/6MJIC TEE
8	MFB00048	1	6MPT/10MJIC ELBOW
9	MFC00002	2	6MSAE/6MJIC ADAPTER
10	MFI00125	4	1/4"NPT X 3 1/2"LG XHS NIPPLE
11	MFC00034	1	8MSAE/10MJIC ELBOW
12	MFC00062	1	8MSAE/8MPT ADAPTER
13			
14	MFC00070	2	6MSAE/4MPT ELBOW
15	MFC00073	1	6MSAE/6MJIC ELBOW
16	MFD00002	2	HOSE CLAMP
17	MFD00022	2	12MPT/12FPT STREET ELBOW
18	MFD00047	2	3/4MPT X 3/4 BARB HOSE END
19			
20	MFI00011	1	1/4"NPT X 3"LG XHS NIPPLE
21	MFI00041	1	12MPT X CLOSE NIPPLE
22	MFC00004	2	6MSAE PLUG
23	MFA00016	1	6MPT/6FPT ELBOW
24	MFC00113	1	6MSAE/6FSAE ELBOW
25	MFH00048	1	3/8SAE QUICK DISCONNECT NIPPLE

DRAWING REVISION HISTORY LISTING

PART NO: 801302
DESCRIPTION: #28 BUTT PLUMBING SCHEMATIC

<u>APPR.</u>	<u>REV</u>	<u>DATE</u>	<u>BY</u>	<u>DESCRIPTION OF REVISION</u>
B	A	6/03/95	LM	Added Item 23. Item 6(MFA00181) was changed to MFB00166.
B	B	12/29/95	TLW	IGES out of Bravo into AutoCad. Added Item 23 to product structure.
SWB	C	11/22/96	SS	REMOVED ITEM #40 (HBBDDD016) AND ADD TO ITEM #39 (HBBDDD015). THE SHOP CAN USE A 15" HOSE IN PLACE OF THE (1) 16" HOSE.
SWB	D	12/06/96	SS	CHANGED ITEM #16 MFD0017 TO MFD00002. THE MFD0017 CLAMP HAS BEEN PURCHASED IN 2 DIFFERENT SIZES. WE NOW BUY THE LARGER SIZE ONLY SINCE THE SMALLER WILL NOT FIT THE 12" & 18" MACHINES. A SMALLER CLAMP MFD0002 IS REQUIRED ON THE 8".
SWB	E	8/11/97	BB	REMOVED ITEM #10 PART NO. MFC00004 & ITEM # 22 PART NO. MFL00013 AND MOVED PARTS TO CARRIAGE MANIFOLD ASSEMBLY PART NO. 1814002. RE-ARRANGED SCHEMATIC TO REPRESENT AS-BUILT CONDITION.
TLW	F	12/19/97	TGW	ITEM 6 MFB00166 ELBOW WAS NOT LONG ENOUGH TO SWIVEL DURING INSTALLATION CAUSING INTERFERENCE WITH JAW. REPLACED WITH MFI00011 & MFB00016. ADDED Datalogger FITTINGS IN TXA PORT.
TLW	G	6/17/98	TGW	ADDED ITEM #22 6MSAE PLUG P/N MFC00004 (QTY 2) & ITEM #24 TRANSDUCER CONNECTION KIT P/N ADL1401. ADDED "BUTT" TO DRAWING DESCRIPTION.
SWB	H	8/10/98	DJL	ITEM #10 MFI00011 WAS NOT LONG ENOUGH. REPLACED WITH MFI00125 3 1/2" LG. NIPPLE.
TLW	----	11/16/98	MLM	CHANGED (MFI00009) 2" TO (MFI00094) 2-1/2" LG PIPE NIPPLE FOR MORE CLEARANCE WITH DIRECTIONAL VALVE ON TOP OF MANIFOLD.
LAF	J	05/5/99	AH	REVISED SCHEMATIC FOR NEW HYDRAULIC MOTOR MEC00021. DELETED ITEM #13(MFC00068) ADDED ITEM #13(MFA00195) QTY 2. ADDED ITEM #25(MFA00192) QTY 2.
SWB	K	06/12/02	BWW	REVISED TO REMOVE ITEM 13 MFA00195, AND ITEM 25 MFA00192. PARTS MOVED TO 840601 FACER HYDRAULIC/PLUMBING SCHEMATIC. REMOVED ITEM 19 MFI00007, PART WAS NOT NEEDED.
SWB	L	03/12/04	BWW	REVISED ITEM 20 FROM MFI00094 TO MFI00011 FOR CLEARANCE WITH CONTINENTAL VALVE.
SWB	M	11/07/05	BWW	MOVED NOTE TO FACE OF DRAWING FOR CLARITY. REMOVED ADL1401 WHICH IS NO LONGER NECESSARY, ADDED NEW ITEM 24 MFC00113 QTY 1 AND ITEM 25 MFH00048 QTY 1 FOR NEW DATALOGGER.

#28 HOSE KITParts List

ITEM	PART NO.	QTY	DESCRIPTION
	A801302		Assembly
35	HAABAD032	1	HOSE ASSEMBLY
36	HAABBD047	1	HOSE ASSEMBLY
37	HBABAD024	1	HOSE ASSEMBLY
38	HBABJE031	1	HOSE ASSEMBLY
39	HBBDDD015	3	HOSE ASSEMBLY
40			
41	HBBDED014	1	HOSE ASSEMBLY
42	HMZZZZ011	1	HOSE
43	HIBFBF010	1	HOSE ASSEMBLY

NOTES:

1. SEE #28 BUTT PLUMBING SCHEMATIC #801302 OR #28 COMBO PLUMBING SCHEMATIC #801308 FOR LOCATION OF ITEM NUMBERS.

DRAWING REVISION HISTORY LISTING

PART NO: A801302
DESCRIPTION: #28 HOSE KIT

<u>APPR.</u>	<u>REV</u>	<u>DATE</u>	<u>BY</u>	<u>DESCRIPTION OF REVISION</u>
SWB	A	11/22/96	SS	REMOVED ITEM #40 (HBBDDD016) AND ADD TO ITEM #39 (HBBDDD015). THE SHOP CAN USE A 15" HOSE IN PLACE OF THE (1) 16" HOSE.
TLW	---	6/17/98	TGW	REVISED NOTE TO INCLUDE "BUTT" IN DESCRIPTION OF PLUMBING SCHEMATIC #801302 & ADDED " OR #28 COMBO PLUMBING SCHEMATIC #801308".