



McElroy Manufacturing, Inc.

The leader by design.

Tulsa, Oklahoma U.S.A.

DRAWN: SWB

CHECK: BWP

APPRVD: B

DATE: 5/16/95

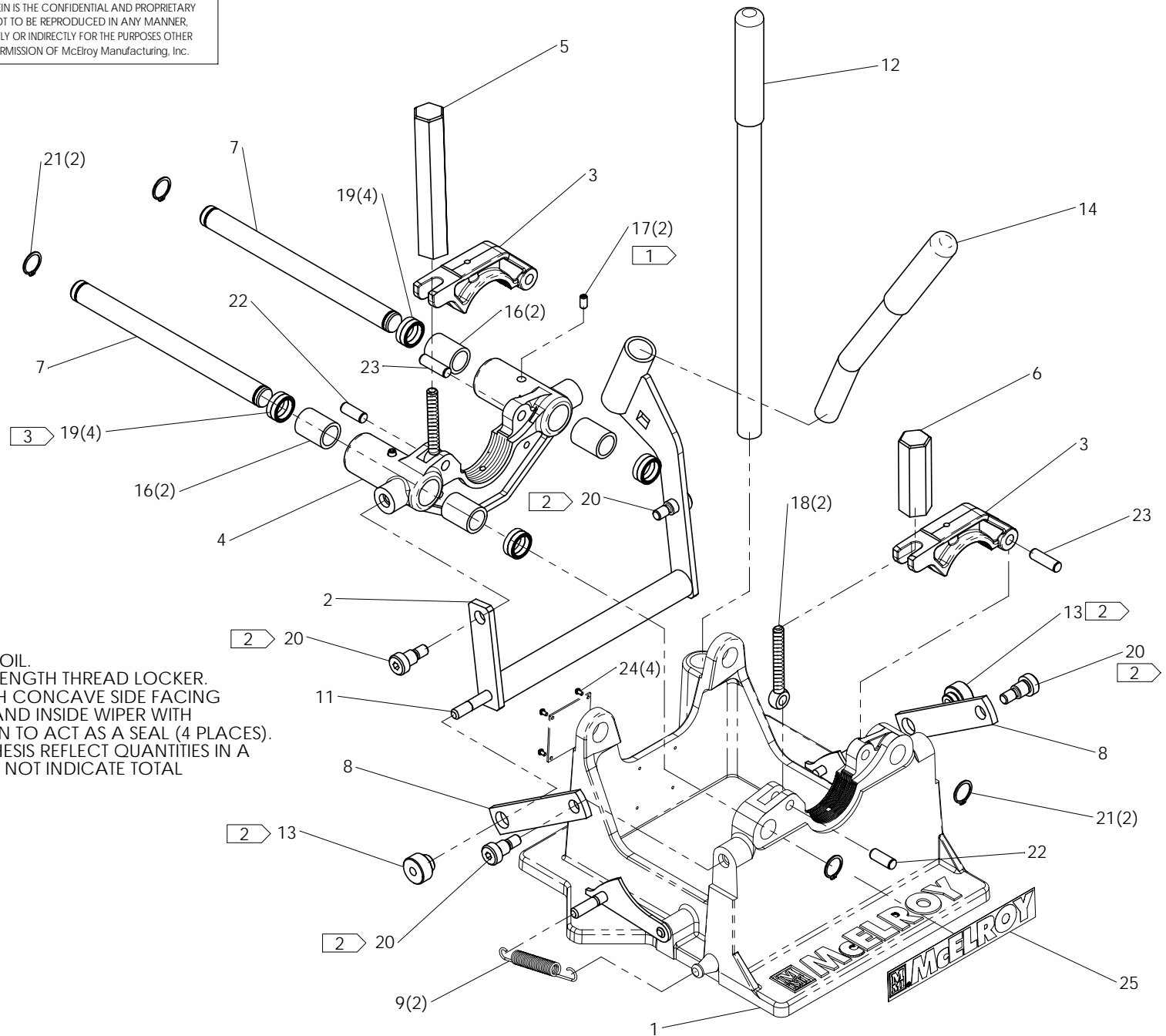
SHT No: 1

REV No: M

PART No: 217201

2 LC BUTT FUSION MACHINE ASSEMBLY

NOTE: THIS DRAWING AND THE INFORMATION CONTAINED THEREIN IS THE CONFIDENTIAL AND PROPRIETARY PROPERTY OF McElroy Manufacturing, Inc. THE DRAWING IS NOT TO BE REPRODUCED IN ANY MANNER, SUBMITTED TO OUTSIDE PARTIES FOR EXAMINATION, OR USED DIRECTLY OR INDIRECTLY FOR THE PURPOSES OTHER THAN THOSE FOR WHICH IT WAS FURNISHED WITHOUT WRITTEN PERMISSION OF McElroy Manufacturing, Inc.



NOTES:

1. FILL WITH 10W-30 MOTOR OIL.
2. INSTALL WITH MEDIUM STRENGTH THREAD LOCKER.
3. INSTALL OUTER WIPER WITH CONCAVE SIDE FACING OUT TO ACT AS A WIPER AND INSIDE WIPER WITH CONCAVE SIDE FACING IN TO ACT AS A SEAL (4 PLACES).
4. ITEMS SHOWN IN PARENTHESIS REFLECT QUANTITIES IN A LOCAL GROUP AND MAY NOT INDICATE TOTAL ASSEMBLY QUANTITIES.

#2 LC BUTT FUSION MACHINE ASSEMBLYPARTS LIST

ITEM	PART NO.	QTY	DESCRIPTION
	217201		Assembly
1	217303	1	BASE WELDMENT
2	217701	1	HANDLE YOKE
3	201102	2	UPPER JAW
4	217403	1	LOWER MOVABLE JAW
5	A211601	1	LONG CLAMP KNOB ASSEMBLY
6	A211501	1	SHORT CLAMP KNOB ASSEMBLY
7	217801	2	GUIDE ROD
8	218001	2	LINK
9	421801	2	LOCK SPRING
10	A214201	1	BUTT FUSION SCREW/DRIVER KIT (NOT SHOWN)
11	218101	1	CAM LOCK STUD
12	202503	1	LEVER HANDLE ASSEMBLY
13	421201	2	YOKE LOCK PIVOT
14	218601	1	BENT LEVER HANDLE ASSEMBLY
15			
16	202401	4	GUIDE ROD BUSHING
17	MFA00001	2	1MPT PLUG
18	MJB00001	2	EYEBOLT
19	MDL00050	8	ROD WIPER
20	MAF00041	4	1/2" X 1/2"LG. SOCKET HEAD SHOULDER SCREW
21	MCB00003	4	EXT. SNAP RING
22	MCK00015	2	3/8 DIA. X 1LG LOCK PIN
23	MCK00016	2	3/8 DIA. X 1-1/4LG LOCK PIN
24	MAH00093	4	#4-40NCX3/16LG LOCK SCREW
25	8163118	1	SMALL McELROY BRANDING LABEL

#2 LC BUTT FUSION MACHINE ASSEMBLYPARTS LIST

ITEM	PART NO.	QTY	DESCRIPTION
------	----------	-----	-------------

Replacement Assembly Part Numbers

A218401			2LC Lower Movable Jaw Assembly, including:
	MDL00050	8 ea.	Rod Wiper
	MFA00001	2 ea.	1MPT PLUG
	202401	4 ea.	Guide Rod Bushing
	217403	1ea.	2LC Lower Movable Jaw
A211601			Long Clamp Knob Assembly, including:
	201501	1 ea.	Long Clamp Knob
	202201	1 ea.	Bearing Assembly
	202301	1 ea.	Snap Ring
A211501			Short Clamp Knob Assembly, including:
	201502	1 ea.	Short Clamp Knob
	202201	1 ea.	Bearing Assembly
	202301	1 ea.	Snap Ring
A218501			2LC Upper/Lower Movable Jaw Assembly, including:
	A211601	1ea.	Long Clamp Knob Assembly
	A218401	1ea.	2LC Lower Movable Jaw Assembly
	MCK00015	1 ea.	3/8DIAX1LG Lock Pin
	MCK00016	1 ea.	3/8DIAX1-1/4LG Lock Pin
	MJB00001	1ea.	Eyebolt
	201102	1ea.	Upper Jaw

DRAWING REVISION HISTORY LISTING

PART NO: 217201
DESCRIPTION: #2 LC BUTT FUSION MACHINE ASSEMBLY

<u>APPR.</u>	<u>REV</u>	<u>DATE</u>	<u>BY</u>	<u>DESCRIPTION OF REVISION</u>
B	F	05/16/95	SWB	Scanned & reduced to 'A' size format.
SWB	G	02/12/97	SS	CHANGED ITEM #16 (410901) TO (410904)
TLW	H	12/18/97	JPS	REMOVED NOTE #2, ASSEMBLY WITH LOCTITE #242.
SWB	J	12/02/98	DJL	ADDED ITEM 28 MAH00093 SCREW FOR NAME PLATE.
TLW	--	05/13/99	LBK	REMOVED * (ASTERISK) FROM ITEMS, 3 AND 4, ALSO REMOVED " *See separate sheet for replacement assembly numbers and individual parts " FROM PARTS LIST, UPDATED DESCRIPTIONS TO CURRENT ENGINEERING STANDARDS, AND ADDED SHEET 2 REPLACEMENT ASSY PART NUMBERS.
TLW	-	7/12/99	MRP	REVISED ITEM 1 FROM 217302 TO 217303 AND REMOVED ITEM 11 (217503) AS IT WAS REPLACED BY THE REVISION OF ITEM 1.
TLW	-	01/04/01	BWW	REVISED TO CHANGE ITEM #16 FROM 410904 TO PL1-217201 TO COMPLY WITH NEW NAME PLATE STANDARD.
MLM	K	1/21/04	ALK	REVISED TO REMOVE 1/16 FILLET WELD SYMBOL, DUE TO BEING CALLED OUT ON 217203.
SWB	L	01/11/05	BWW	REVISED TO ADD ITEM 29 8163118 QTY (1) SMALL BRANDING LABEL.
SWB	M	08/29/05	BWW	CREATED EXPLODED ISOMETRIC VIEW AND NEW NOTE 4 FOR CLARITY.