



McElroy Manufacturing, Inc.

The leader by design.

Tulsa, Oklahoma U.S.A.

DRAWN: SWB

CHECK: BWP

APPRVD: B

DATE: 5/16/95

SHT No: 1

REV No: T

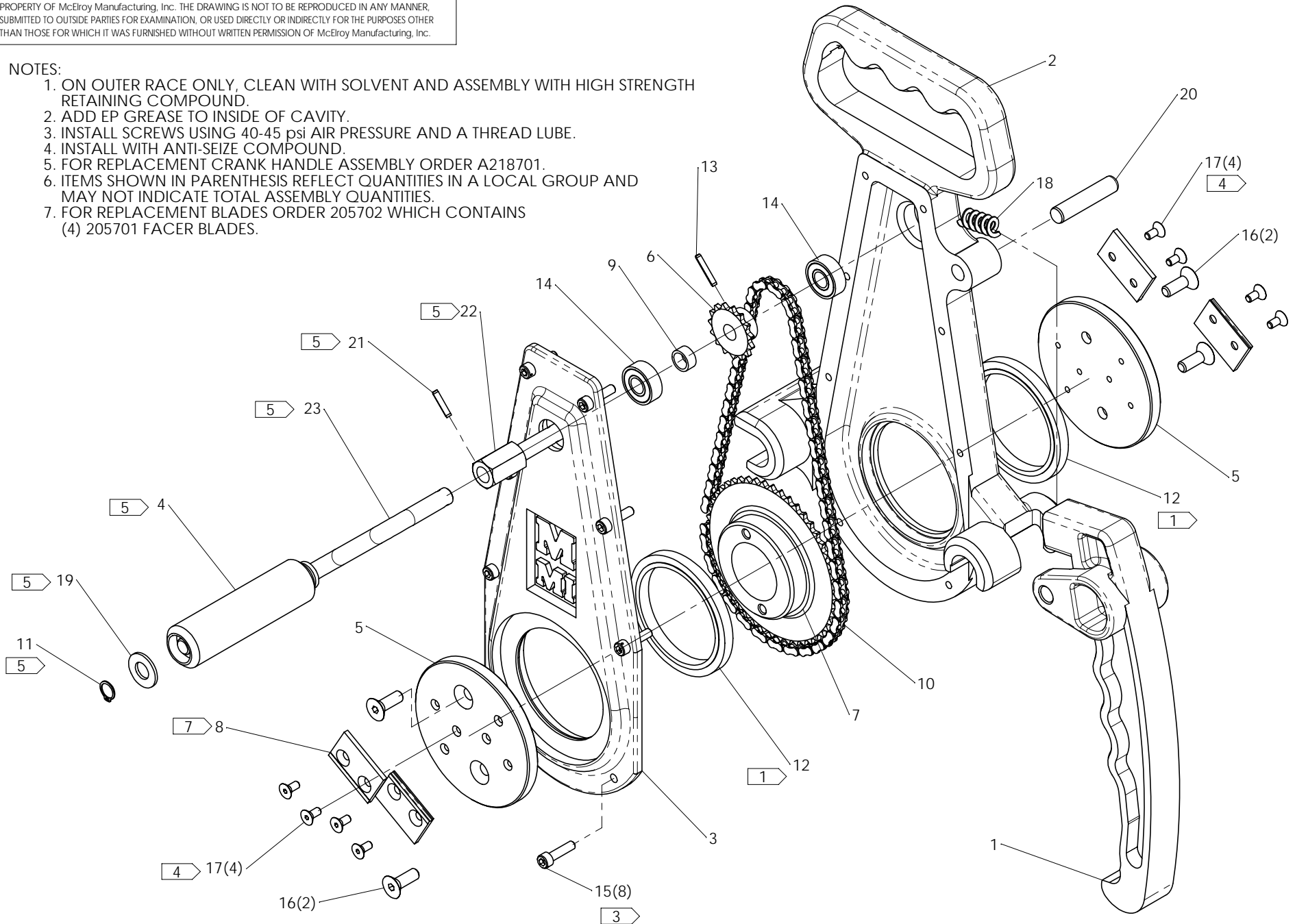
PART No: 216101

2" FACER ASSEMBLY

NOTE: THIS DRAWING AND THE INFORMATION CONTAINED THEREIN IS THE CONFIDENTIAL AND PROPRIETARY PROPERTY OF McElroy Manufacturing, Inc. THE DRAWING IS NOT TO BE REPRODUCED IN ANY MANNER, SUBMITTED TO OUTSIDE PARTIES FOR EXAMINATION, OR USED DIRECTLY OR INDIRECTLY FOR THE PURPOSES OTHER THAN THOSE FOR WHICH IT WAS FURNISHED WITHOUT WRITTEN PERMISSION OF McElroy Manufacturing, Inc.

NOTES:

1. ON OUTER RACE ONLY, CLEAN WITH SOLVENT AND ASSEMBLY WITH HIGH STRENGTH RETAINING COMPOUND.
2. ADD EP GREASE TO INSIDE OF CAVITY.
3. INSTALL SCREWS USING 40-45 psi AIR PRESSURE AND A THREAD LUBE.
4. INSTALL WITH ANTI-SEIZE COMPOUND.
5. FOR REPLACEMENT CRANK HANDLE ASSEMBLY ORDER A218701.
6. ITEMS SHOWN IN PARENTHESIS REFLECT QUANTITIES IN A LOCAL GROUP AND MAY NOT INDICATE TOTAL ASSEMBLY QUANTITIES.
7. FOR REPLACEMENT BLADES ORDER 205702 WHICH CONTAINS (4) 205701 FACER BLADES.



2" FACER ASSEMBLYPARTS LIST

ITEM	PART NO.	QTY	DESCRIPTION
	216101		Assembly
1	216602	1	LATCH HANDLE
2	216202	1	BODY
3	216302	1	COVER PLATE
4	216801	1	CRANK HANDLE
5	216401	2	BLADE HOLDER
6	204601	1	DRIVE SPROCKET
7	216501	1	DRIVEN SPROCKET
8	205701	4	2" FACER BLADE
9	205101	1	SPACER
10	A216901	1	FACER CHAIN ASSEMBLY
11	MCB00017	1	EXTERNAL SNAP RING
12	MDM00089	2	BALL BEARING
13	MCG00017	1	1/8 DIA. x 3/4 LG. Roll Pin
14	MDM00061	2	BALL BEARING
15	MAH00037	8	#10-24NC x 3/4 LG. THREAD CUTTING SCREW
16	MAD00044	4	1/4-20NC x 3/4 LG. FHCS
17	MAH00074	8	#8-32NC x 3/8 LG. FHCS SS
18	MJE00008	1	DIE SPRING
19	MBG00001	1	3/8 TYPE 'AN' FLAT WASHER
20	MCK00017	1	3/8 DIA. x 1 3/4 LG. LOCK PIN
21	MCG00035	1	1/8 DIA. x 5/8 LG. ROLL PIN
22	217101	1	CRANK HEX ADAPTER
23	217001	1	FACER CRANK WELDMENT

DRAWING REVISION HISTORY LISTING

PART NO: 216101
DESCRIPTION: 2" FACER ASSEMBLY

<u>APPR.</u>	<u>REV</u>	<u>DATE</u>	<u>BY</u>	<u>DESCRIPTION OF REVISION</u>
SWB	J	5/16/95		SCANNED AND REDUCED TO 'A' SIZE FORMAT.
TLW	K	10/3/95		REMOVED ITEM #12 (NAME PLATE).
SWB	L	4/3/96		ADDED NOTE #2 FOR DOW 557 SILICONE DRY FILM LUB ON GUIDE ROD CONTACT SURFACES.
TLW	M	12/18/97	JPS	REMOVED ITEM #24 (ROLL PIN).
SWB	N	6/7/01	MLM	REVISED ITEM-1 FROM 216601 TO 216602.
SWB	P	10/16/01	KWB	REPLACED CRANK HANDLE ASSEMBLY WITH INDIVIDUAL PART CALL OUTS. ITEM 4 WAS A218701 & ADDED ITEM-35 & -36. ADDED FLAG NOTE 8.
SWB	R	11/19/01	KWB	REVISED NOTE 1 TO REMOVE PRIMER 'T' & CURE TIME & ADD CLEAN WITH SOLVENT. REMOVED NOTE 2 TO USE DRY FILM LUBE. REMOVED NOTE 4 TO INSTALL COVER WITH PERMATEX #2C SEALANT. ALL DONE TO AGREE WITH CURRENT ASSEMBLY PROCEDURES.
SWB	S	12/20/01	KWB	REMOVED NOTE 6, LOCTITE BLADE HOLDERS, TO AGREE WITH CURRENT ASSEMBLY PROCEDURES.
SWB	T	08/29/05	BWW	CREATED EXPLODED ISOMETRIC VIEW AND ADDED NOTE 6 FOR CLARITY. RENUMBERED NOTES AND ITEM NUMBERS. CHANGED ITEM 8 FROM 205702 TO 205701 QTY 4 TO MATCH PRODUCT STRUCTURE. ADDED NOTE 7.